

### Anti-Rex1 antibody ab28141

★★★★★ **3 Abreviews**   **15 References**   画像数 3

#### 製品の概要

製品名	Anti-Rex1 antibody
製品の詳細	Rabbit polyclonal to Rex1
由来種	Rabbit
アプリケーション	<b>適用あり:</b> WB, ICC/IF
種交差性	<b>交差種:</b> Mouse, Human
免疫原	Synthetic peptide corresponding to Mouse Rex1 aa 1-100 conjugated to keyhole limpet haemocyanin. (Peptide available as <a href="#">ab28619</a> , <a href="#">ab28620</a> )
ポジティブ・コントロール	Lysate of 293T cells overexpressing Rex1, Mouse Embryonic Stem Cells expressing biotinylated Rex1.
特記事項	<p>The Life Science industry has been in the grips of a reproducibility crisis for a number of years. Abcam is leading the way in addressing this with our range of recombinant monoclonal antibodies and knockout edited cell lines for gold-standard validation. Please check that this product meets your needs before purchasing.</p> <p>If you have any questions, special requirements or concerns, please send us an inquiry and/or contact our Support team ahead of purchase. Recommended alternatives for this product can be found below, along with publications, customer reviews and Q&amp;As</p>

#### 製品の特性

製品の状態	Liquid
保存方法	Shipped at 4°C. Store at +4°C short term (1-2 weeks). Upon delivery aliquot. Store at -20°C or -80°C. Avoid freeze / thaw cycle.
バッファー	<p>pH: 7.40</p> <p>Preservative: 0.02% Sodium azide</p> <p>Constituent: PBS</p> <p>Batches of this product that have a concentration &lt; 1mg/ml may have BSA added as a stabilising agent. If you would like information about the formulation of a specific lot, please contact our scientific support team who will be happy to help.</p>
精製度	Immunogen affinity purified

ポリ/モノ  
アイソタイプ

ポリクローナル  
IgG

## アプリケーション

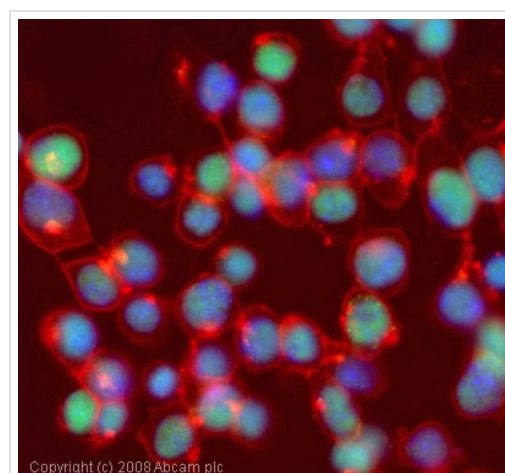
**The Abpromise guarantee** Abpromise保証は、次のテスト済みアプリケーションにおけるab28141の使用に適用されます  
アプリケーションノートには、推奨の開始希釈率がありますが、適切な希釈率につきましてはご検討ください。

アプリケーション	Abreviews	特記事項
WB	★★★★☆ (1)	Use a concentration of 0.5 µg/ml. Detects a band of approximately 38 kDa (predicted molecular weight: 32 kDa).
ICC/IF	★★★★☆ (1)	Use a concentration of 1 µg/ml.

## ターゲット情報

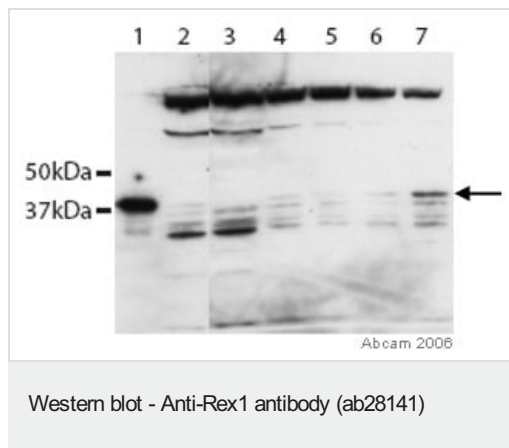
機能	Involved in self-renewal property of ES cells (By similarity). May be involved in transcriptional regulation.
組織特異性	Expressed in kidney, epidermal keratinocytes, prostate epithelial cells, bronchial and small airway lung epithelial cells (at protein level). Expressed in malignant kidney and several carcinoma cell lines (at protein level). Expressed in embryonic stem cells, kidney, epidermal keratinocytes, prostate epithelial cells, bronchial and small airway lung epithelial cells. Expressed in embryonal carcinomas, seminomas, malignant kidney and several carcinoma cell lines.
配列類似性	Belongs to the krueppel C2H2-type zinc-finger protein family. Contains 4 C2H2-type zinc fingers.
細胞内局在	Nucleus.

## 画像



ICC/IF image of ab28141 stained mouse embryonic stem cells. The cells were 4% PFA fixed (10 min) and then incubated in 1%BSA / 10% normal goat serum / 0.3M glycine in 0.1% PBS-Tween for 1h to permeabilise the cells and block non-specific protein-protein interactions. The cells were then incubated with the antibody (ab28141, 1µg/ml) overnight at +4°C. The secondary antibody (green) was Alexa Fluor® 488 goat anti-rabbit IgG (H+L) used at a 1/1000 dilution for 1h. Alexa Fluor® 594 WGA was used to label plasma membranes (red) at a 1/200 dilution for 1h. DAPI was used to stain the cell nuclei (blue).

Immunocytochemistry/ Immunofluorescence - Anti-Rex1 antibody (ab28141)



**All lanes :** Anti-Rex1 antibody (ab28141) at 0.5 µg/ml

**Lane 1 :** Lysate of 293T cells overexpressing Rex1

**Lane 2 :** Lysate of Mouse Embryonic Stem Cells expressing biotinylated Rex1

**Lane 3 :** Negative control for tagged protein - Lysate of Mouse Embryonic Stem Cells (endogenous protein present)

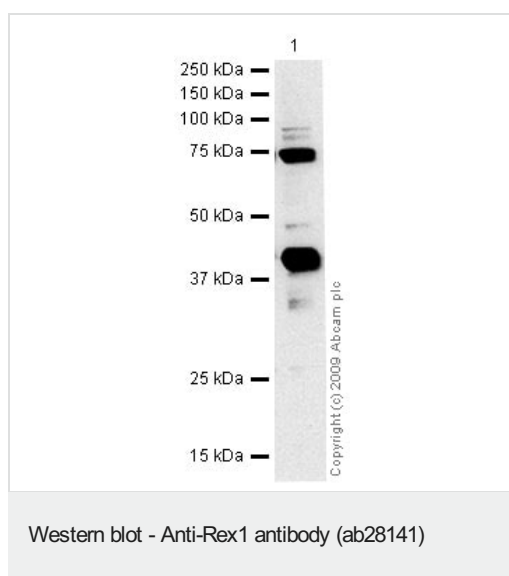
**Lanes 4-7 :** Lysate of various passages of Mouse Embryonic Stem Cells expressing biotinylated Rex1

**Predicted band size:** 32 kDa

**Observed band size:** 32 kDa

**Additional bands at:** 34 kDa (possible non-specific binding), 36 kDa (possible non-specific binding), 38 kDa (possible tagged protein)

In this western blot Anti-Rex1 antibody ab28141 recognizes a band at 32kDa corresponding to the endogenous Rex1 protein and a band at 38 kDa corresponding to biotinylated Rex1. The identities of the bands at 34 and 36 kDa are unknown. It is possible that they represent non-specific binding, but it may be that they represent modified forms of the non-biotinylated endogenous Rex1. The biotinylated Rex1 protein contains an N-terminal FLAG and a 25 AA peptide substrate for biotinylation. Therefore, the biotinylated protein is expected to migrate at a slightly higher molecular weight than endogenous Rex1. The large bands at the top of the image are likely to represent non-specific binding.



Anti-Rex1 antibody (ab28141) at 1 µg/ml + 293T Cells Overexpressing Mouse Rex1 at 10 µg

### Secondary

Goat polyclonal to Rabbit IgG - H&L - Pre-Adsorbed (HRP) at 1/3000 dilution

Performed under reducing conditions.

**Predicted band size:** 32 kDa

**Observed band size:** 40 kDa

**Additional bands at:** 100 kDa, 75 kDa. We are unsure as to the identity of these extra bands.

The REX1 protein in these 293T cells contains an N-terminal FLAG tag. We expect the tagged protein to migrate at a higher molecular weight than endogenous REX1.

**Please note:** All products are "FOR RESEARCH USE ONLY. NOT FOR USE IN DIAGNOSTIC PROCEDURES"

#### **Our Abpromise to you: Quality guaranteed and expert technical support**

---

- Replacement or refund for products not performing as stated on the datasheet
- Valid for 12 months from date of delivery
- Response to your inquiry within 24 hours
- We provide support in Chinese, English, French, German, Japanese and Spanish
- Extensive multi-media technical resources to help you
- We investigate all quality concerns to ensure our products perform to the highest standards

If the product does not perform as described on this datasheet, we will offer a refund or replacement. For full details of the Abpromise, please visit <https://www.abcam.co.jp/abpromise> or contact our technical team.

#### **Terms and conditions**

---

- Guarantee only valid for products bought direct from Abcam or one of our authorized distributors