

# Anti-Respiratory Syncytial Virus M2-1 Protein antibody [RSV5H5] ab94805

**10 References**   **画像数 1**

### 製品の概要

製品名	Anti-Respiratory Syncytial Virus M2-1 Protein antibody [RSV5H5]
製品の詳細	Mouse monoclonal [RSV5H5] to Respiratory Syncytial Virus M2-1 Protein
由来種	Mouse
特異性	This antibody has broad specificity for Respiratory Syncytial Virus of both sub-groups A and B
アプリケーション	<b>適用あり:</b> ELISA, WB, IP, ICC/IF
種交差性	<b>交差種:</b> Respiratory syncytial virus
免疫原	Tissue, cells or virus corresponding to Respiratory Syncytial Virus M2-1 Protein. Respiratory Syncytial Virus strain A2 infected HeLa cells.
特記事項	<p>Fusion partner: PS-NS/1-Ag4 Recommended growth conditions: Growth medium RPMI with 25mM Hepes, 2mM additional glutamine and 10% heat inactivated foetal calf serum</p> <p>The Life Science industry has been in the grips of a reproducibility crisis for a number of years. Abcam is leading the way in addressing this with our range of recombinant monoclonal antibodies and knockout edited cell lines for gold-standard validation. Please check that this product meets your needs before purchasing.</p> <p>If you have any questions, special requirements or concerns, please send us an inquiry and/or contact our Support team ahead of purchase. Recommended alternatives for this product can be found below, along with publications, customer reviews and Q&amp;As</p>

### 製品の特性

製品の状態	Liquid
保存方法	Shipped at 4°C. Upon delivery aliquot and store at -20°C or -80°C. Avoid repeated freeze / thaw cycles.
バッファー	Preservative: 0.02% Sodium azide Constituent: 99.98% PBS
精製度	Protein A purified
ポリ/モノ	モノクローナル
クローン名	RSV5H5
アイソタイプ	IgG1

アプリケーション

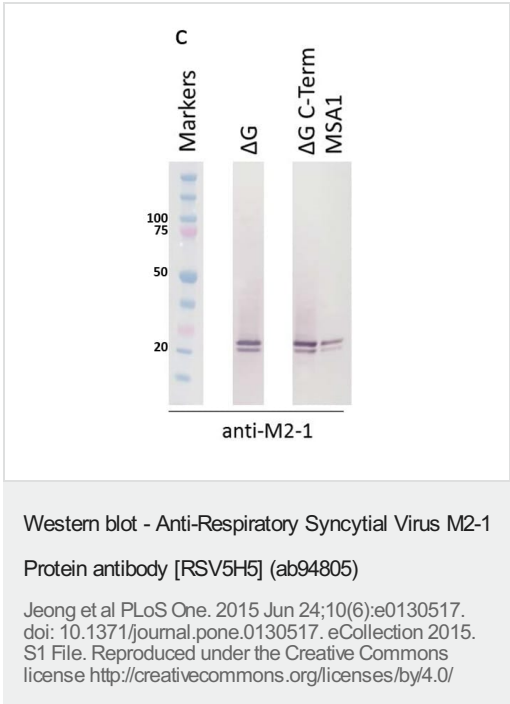
The Abpromise guarantee      Abpromise保証は、 次のテスト済みアプリケーションにおけるab94805の使用に適用されます  
アプリケーションノートには、推奨の開始希釈率がありますが、適切な希釈率につきましてはご検討ください。

アプリケーション	Abreviews	特記事項
ELISA		Use at an assay dependent concentration.
WB		Use at an assay dependent concentration. Predicted molecular weight: 22 kDa.
IP		Use at an assay dependent concentration.
ICC/IF		Use at an assay dependent concentration. on Acetone fixed or Paraffin embedded samples.

ターゲット情報

関連性      The M2-1 protein is an essential element in the RSV replication complex.  
細胞内局在      viral envelope

画像



**RSV mutants show expected patterns of G, F, and M2-1 expression.**

Western blotting of Vero cell lysates infected with RSV ΔG, ΔG C-term, and wild type (MSA1).

**(Figure C shown)** Detection of M2-1 using anti-M2-1 antibody ab94805.

Cell lysates from virus cultures grown for 6 days on Vero cells were subjected to SDS-PAGE, transferred to membranes and probed with anti-M2-1 antibody (Abcam, ab94805), and incubated with a secondary goat anti-mouse alkaline phosphatase conjugate. Anti-G western blot was done with rabbit anti-RSV-G polyclonal and incubated with goat anti-rabbit secondary antibody (Abcam, **ab97048**). Bands were visualized using BCIP/NBT. The molecular weight marker used was Precision Plus Protein Dual Color Standards.

### **Our Abpromise to you: Quality guaranteed and expert technical support**

---

- Replacement or refund for products not performing as stated on the datasheet
- Valid for 12 months from date of delivery
- Response to your inquiry within 24 hours
  
- We provide support in Chinese, English, French, German, Japanese and Spanish
- Extensive multi-media technical resources to help you
- We investigate all quality concerns to ensure our products perform to the highest standards

If the product does not perform as described on this datasheet, we will offer a refund or replacement. For full details of the Abpromise, please visit <https://www.abcam.co.jp/abpromise> or contact our technical team.

### **Terms and conditions**

---

- Guarantee only valid for products bought direct from Abcam or one of our authorized distributors