

Anti-Relaxin 1 antibody ab70803

1 References 画像数 1

医薬用外劇物

製品の概要

製品名	Anti-Relaxin 1 antibody
製品の詳細	Rabbit polyclonal to Relaxin 1
由来種	Rabbit
特異性	ab70803 recognizes Relaxin 1 (~20 kDa) and its dimer form (~40 kDa).
アプリケーション	適用あり: WB
種交差性	交差種: Rat, Human
免疫原	Synthetic peptide corresponding to residues surrounding amino acid 130 of rat Relaxin 1.
ポジティブ・コントロール	WB: Rat kidney tissue lysate, Jurkat Cell lysate.
特記事項	<p>This product is manufactured by BioVision, an Abcam company and was previously called 3874 Relaxin-1 Antibody. 3874-100 is the same size as the 100 µg size of ab70803.</p> <p>The Life Science industry has been in the grips of a reproducibility crisis for a number of years. Abcam is leading the way in addressing this with our range of recombinant monoclonal antibodies and knockout edited cell lines for gold-standard validation. Please check that this product meets your needs before purchasing.</p> <p>If you have any questions, special requirements or concerns, please send us an inquiry and/or contact our Support team ahead of purchase. Recommended alternatives for this product can be found below, along with publications, customer reviews and Q&As</p>

製品の特性

製品の状態	Liquid
保存方法	Shipped at 4°C. Upon delivery aliquot. Store at -20°C or -80°C. Avoid freeze / thaw cycle.
バッファー	<p>pH: 7.2</p> <p>Preservative: 0.01% Thimerosal (merthiolate)</p> <p>Constituents: 0.5% BSA, 30% Glycerol (glycerin, glycerine), PBS</p>
精製度	Protein A purified
ポリ/モノ	ポリクローナル
アイソタイプ	IgG

アプリケーション

The Abpromise guarantee

Abpromise保証は、次のテスト済みアプリケーションにおけるab70803の使用に適用されます

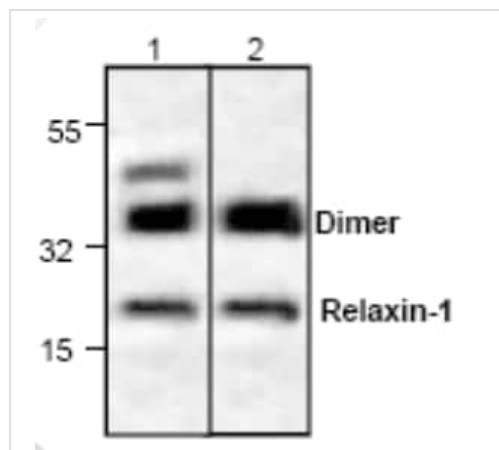
アプリケーションノートには、推奨の開始希釈率がありますが、適切な希釈率につきましてはご確認ください。

アプリケーション	Abreviews	特記事項
WB		Use a concentration of 0.5 - 4 µg/ml. Predicted molecular weight: 21 kDa.

ターゲット情報

機能	Relaxin is an ovarian hormone that acts with estrogen to produce dilatation of the birth canal in many mammals. May be involved in remodeling of connective tissues during pregnancy, promoting growth of pubic ligaments and ripening of the cervix.
組織特異性	Prostate. Not expressed in placenta, decidua or ovary.
配列類似性	Belongs to the insulin family.
細胞内局在	Secreted.

画像



Western blot - Anti-Relaxin 1 antibody (ab70803)

All lanes : Anti-Relaxin 1 antibody (ab70803) (0.5-4 µg/ml)

Lane 1 : Jurkat cell lysate

Lane 2 : Rat kidney tissue lysate

Predicted band size: 21 kDa

The antibody recognizes Relaxin-1 (~20 kDa) and its dimer form (~40 kDa) in samples from human (Jurkat cell lysate), and rat (kidney lysate). Other species have not been tested.

Please note: All products are "FOR RESEARCH USE ONLY. NOT FOR USE IN DIAGNOSTIC PROCEDURES"

Our Abpromise to you: Quality guaranteed and expert technical support

- Replacement or refund for products not performing as stated on the datasheet
- Valid for 12 months from date of delivery
- Response to your inquiry within 24 hours
- We provide support in Chinese, English, French, German, Japanese and Spanish
- Extensive multi-media technical resources to help you

- We investigate all quality concerns to ensure our products perform to the highest standards

If the product does not perform as described on this datasheet, we will offer a refund or replacement. For full details of the Abpromise, please visit <https://www.abcam.co.jp/abpromise> or contact our technical team.

Terms and conditions

- Guarantee only valid for products bought direct from Abcam or one of our authorized distributors