

Anti-Rel B antibody [EP613Y] ab33917

リコンビナント **RabMAb**

5 References **画像数 5**

製品の概要

製品名	Anti-Rel B antibody [EP613Y]
製品の詳細	Rabbit monoclonal [EP613Y] to Rel B
由来種	Rabbit
アプリケーション	適用あり: Flow Cyt (Intra), WB, IHC-P, IP
種交差性	交差種: Human
免疫原	Synthetic peptide within Human Rel B aa 1-100 (N terminal). The exact sequence is proprietary.
ポジティブ・コントロール	WB: Raji and Daudi cell lysates. IHC-P: Human lymphoma tissue. Flow Cyt (intra): Daudi cells. IP: Raji cells
特記事項	<p>This product is a recombinant monoclonal antibody, which offers several advantages including:</p> <ul style="list-style-type: none"> - High batch-to-batch consistency and reproducibility - Improved sensitivity and specificity - Long-term security of supply - Animal-free production <p>For more information see here.</p> <p>Our RabMAb[®] technology is a patented hybridoma-based technology for making rabbit monoclonal antibodies. For details on our patents, please refer to RabMAb[®] patents.</p>

製品の特性

製品の状態	Liquid
保存方法	Shipped at 4°C. Upon delivery aliquot and store at -20°C. Avoid freeze / thaw cycles.
バッファー	<p>pH: 7.20</p> <p>Preservative: 0.05% Sodium azide</p> <p>Constituents: 40% Glycerol (glycerin, glycerine), 9.85% Tris glycine, 50% Tissue culture supernatant</p>
精製度	Protein A purified
ポリ/モノ	モノクローナル
クローン名	EP613Y
アイソタイプ	IgG

アプリケーション

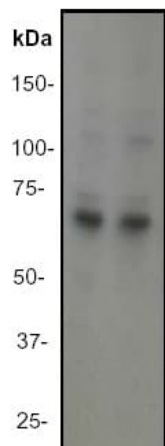
The Abpromise guarantee Abpromise保証は、 次のテスト済みアプリケーションにおけるab33917の使用に適用されます
アプリケーションノートには、推奨の開始希釈率がありますが、適切な希釈率につきましてはご確認ください。

アプリケーション	Abreviews	特記事項
Flow Cyt (Intra)		1/2000.
WB		1/500. Detects a band of approximately 70 kDa (predicted molecular weight: 62 kDa).
IHC-P		1/100 - 1/250. Perform heat mediated antigen retrieval with citrate buffer pH 6 before commencing with IHC staining protocol.
IP		1/50.

ターゲット情報

機能	NF-kappa-B is a pleiotropic transcription factor which is present in almost all cell types and is involved in many biological processes such as inflammation, immunity, differentiation, cell growth, tumorigenesis and apoptosis. NF-kappa-B is a homo- or heterodimeric complex formed by the Rel-like domain-containing proteins RELA/p65, RELB, NFkB1/p105, NFkB1/p50, REL and NFkB2/p52. The dimers bind at kappa-B sites in the DNA of their target genes and the individual dimers have distinct preferences for different kappa-B sites that they can bind with distinguishable affinity and specificity. Different dimer combinations act as transcriptional activators or repressors, respectively. NF-kappa-B is controlled by various mechanisms of post-translational modification and subcellular compartmentalization as well as by interactions with other cofactors or corepressors. NF-kappa-B complexes are held in the cytoplasm in an inactive state complexed with members of the NF-kappa-B inhibitor (I-kappa-B) family. In a conventional activation pathway, I-kappa-B is phosphorylated by I-kappa-B kinases (IKKs) in response to different activators, subsequently degraded thus liberating the active NF-kappa-B complex which translocates to the nucleus. NF-kappa-B heterodimeric RelB-p50 and RelB-p52 complexes are transcriptional activators. RELB neither associates with DNA nor with RELA/p65 or REL. Stimulates promoter activity in the presence of NFkB2/p49.
配列類似性	Contains 1 RHD (Rel-like) domain.
ドメイン	Both N- and C-terminal domains are required for transcriptional activation.
翻訳後修飾	Phosphorylation at 'Thr-103' and 'Ser-573' is followed by proteasomal degradation.
細胞内局在	Nucleus. Cytoplasm > cytoskeleton > centrosome. Co-localizes with NEK6 in the centrosome.

画像



Western blot - Anti-Rel B antibody [EP613Y]
(ab33917)

All lanes : Anti-Rel B antibody [EP613Y] (ab33917) at 1/500 dilution

Lane 1 : Raji cell lysate

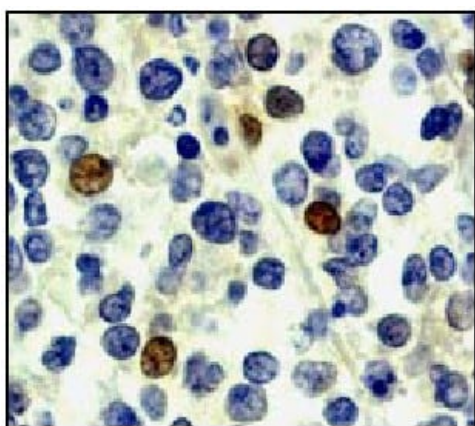
Lane 2 : Daudi cell lysate

Lysates/proteins at 10 µg per lane.

Secondary

All lanes : Goat anti-rabbit HRP labeled.

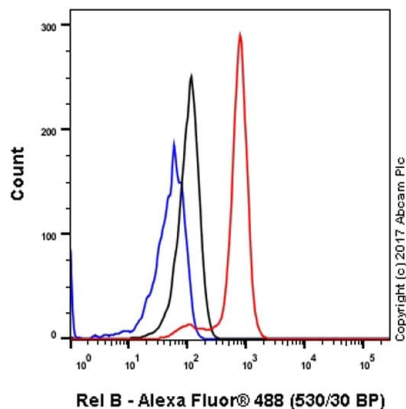
Predicted band size: 62 kDa



Immunohistochemistry (Formalin/PFA-fixed paraffin-embedded sections) - Anti-Rel B antibody [EP613Y]
(ab33917)

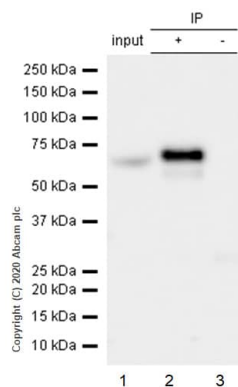
Immunohistochemical analysis of paraffin-embedded human lymphoma using ab33917

Perform heat mediated antigen retrieval with citrate buffer pH 6 before commencing with IHC staining protocol.



Flow Cytometry (Intracellular) - Anti-Rel B antibody
[EP613Y] (ab33917)

Intracellular Flow Cytometry analysis of Daudi (Human Burkitt's lymphoma lymphoblast) cells labeling Rel B (red) with ab33917 at a 1/2000 dilution. Cells were fixed with 4% paraformaldehyde and permeabilized with 90% methanol. A goat anti-rabbit IgG (Alexa Fluor® 488) ([ab150077](#)) was used as the secondary antibody at a 1/2000 dilution. Black - Rabbit monoclonal IgG (Black) ([ab172730](#)). Blue (unlabeled control) - Cell without incubation with primary antibody and secondary antibody (Blue).



Immunoprecipitation - Anti-Rel B antibody [EP613Y]
(ab33917)

Purified ab33917 at 1/50 dilution (2µg) immunoprecipitating Rel B in Raji whole cell lysate.

Lane 1 (input): Raji (Human Burkitt's lymphoma B lymphocyte) whole cell lysate 10µg

Lane 2 (+): ab33917 + Raji whole cell lysate.

Lane 3 (-): Rabbit monoclonal IgG ([ab172730](#)) instead of ab33917 in Raji whole cell lysate.

VeriBlot for IP Detection Reagent (HRP) ([ab131366](#)) (1/1000 dilution) was used for Western blotting.

Blocking Buffer and concentration: 5% NFDm/TBST.

Diluting buffer and concentration: 5% NFDm/TBST.

Observed band size: 62 kDa

Why choose a recombinant antibody?



Research with confidence
Consistent and reproducible results



Long-term and scalable supply
Recombinant technology



Success from the first experiment
Confirmed specificity



Ethical standards compliant
Animal-free production

Anti-Rel B antibody [EP613Y] (ab33917)

Please note: All products are "FOR RESEARCH USE ONLY. NOT FOR USE IN DIAGNOSTIC PROCEDURES"

Our Abpromise to you: Quality guaranteed and expert technical support

- Replacement or refund for products not performing as stated on the datasheet
- Valid for 12 months from date of delivery
- Response to your inquiry within 24 hours
- We provide support in Chinese, English, French, German, Japanese and Spanish
- Extensive multi-media technical resources to help you
- We investigate all quality concerns to ensure our products perform to the highest standards

If the product does not perform as described on this datasheet, we will offer a refund or replacement. For full details of the Abpromise, please visit <https://www.abcam.co.jp/abpromise> or contact our technical team.

Terms and conditions

- Guarantee only valid for products bought direct from Abcam or one of our authorized distributors