

Anti-REG1 alpha antibody ab47099

4 References [画像数 1](#)

製品の概要

製品名	Anti-REG1 alpha antibody
製品の詳細	Rabbit polyclonal to REG1 alpha
由来種	Rabbit
特異性	This antibody is specific for REG 1 alpha. It was tested in a sandwich ELISA with antigens: Reg 1beta, PAP=(REG III), and Reg IV. We did not detect any crossreactivity.
アプリケーション	適用あり: WB
種交差性	交差種: Human
免疫原	Recombinant human REG 1 alpha. A 17.8 kDa protein containing 144 amino acid residues of the human REG 1 alpha and 12 additional amino acid residues, HisTag. Source of immunogen <i>E.coli</i>
ポジティブ・コントロール	recombinant protein
特記事項	<p>The Life Science industry has been in the grips of a reproducibility crisis for a number of years. Abcam is leading the way in addressing this with our range of recombinant monoclonal antibodies and knockout edited cell lines for gold-standard validation. Please check that this product meets your needs before purchasing.</p> <p>If you have any questions, special requirements or concerns, please send us an inquiry and/or contact our Support team ahead of purchase. Recommended alternatives for this product can be found below, along with publications, customer reviews and Q&As</p>

製品の特性

製品の状態	Liquid
保存方法	Shipped at 4°C. Store at +4°C short term (1-2 weeks). Upon delivery aliquot. Store at -20°C or -80°C. Avoid freeze / thaw cycle.
バッファー	Constituents: 0.134% PBS, 0.58% Sodium chloride
精製度	Immunogen affinity purified
特記事項 (精製)	Immunoaffinity chromatography on a column with immobilized recombinant human REG 1 alpha.
ポリ/モノ	ポリクローナル
アイソタイプ	IgG

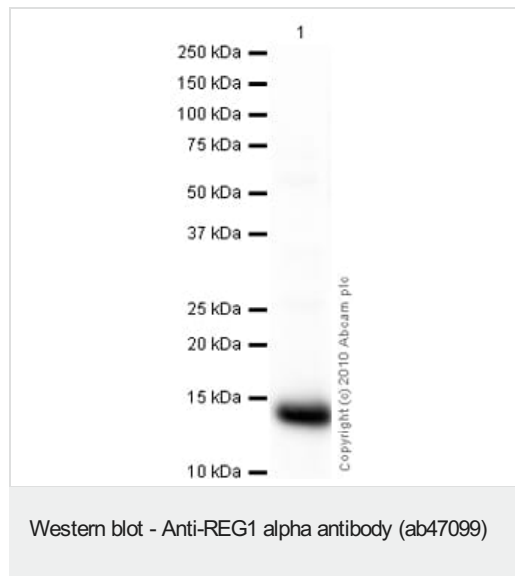
The Abpromise guarantee **Abpromise保証は、** 次のテスト済みアプリケーションにおけるab47099の使用に適用されます
 アプリケーションノートには、推奨の開始希釈率がありますが、適切な希釈率につきましてはご検討ください。

アプリケーション	Abreviews	特記事項
WB		Use a concentration of 1 µg/ml. Detects a band of approximately 14 kDa (predicted molecular weight: 19 kDa).

ターゲット情報

機能	Might act as an inhibitor of spontaneous calcium carbonate precipitation. May be associated with neuronal sprouting in brain, and with brain and pancreas regeneration.
組織特異性	In pancreatic acinar cells and, in lower levels, in brain. Enhanced expression of PSP-related transcripts and intraneuronal accumulation of PSP-like proteins is found in brain from Alzheimer disease and Down syndrome patients.
配列類似性	Contains 1 C-type lectin domain.
発生段階	High expression levels in fetal and infant brains; much lower in adult brains.
翻訳後修飾	The composition of the O-linked carbohydrate on Thr-27 is complex and varied. In the crystallographic structure, the attached sugar appears to be N-acetylglucosamine, typical of an intracellular protein, rather than N-acetylgalactosamine.
細胞内局在	Secreted.

画像



Anti-REG1 alpha antibody (ab47099) at 1 µg/ml + Human pancreas tissue lysate - total protein (**ab29816**) at 10 µg

Secondary

Goat Anti-Rabbit IgG H&L (HRP) preadsorbed (**ab97080**) at 1/5000 dilution

Developed using the ECL technique.

Performed under reducing conditions.

Predicted band size: 19 kDa

Exposure time: 30 seconds

The band observed at 14 kDa could potentially be a cleaved form of REG1 alpha due to the presence of a 25 amino acid signal peptide.

Please note: All products are "FOR RESEARCH USE ONLY. NOT FOR USE IN DIAGNOSTIC PROCEDURES"

Our Abpromise to you: Quality guaranteed and expert technical support

- Replacement or refund for products not performing as stated on the datasheet
- Valid for 12 months from date of delivery
- Response to your inquiry within 24 hours
- We provide support in Chinese, English, French, German, Japanese and Spanish
- Extensive multi-media technical resources to help you
- We investigate all quality concerns to ensure our products perform to the highest standards

If the product does not perform as described on this datasheet, we will offer a refund or replacement. For full details of the Abpromise, please visit <https://www.abcam.co.jp/abpromise> or contact our technical team.

Terms and conditions

- Guarantee only valid for products bought direct from Abcam or one of our authorized distributors