

Anti-Reelin antibody [G10] ab78540

★★★★★ **4 Abreviews** **30 References** 画像数 4

製品の概要

製品名	Anti-Reelin antibody [G10]
製品の詳細	Mouse monoclonal [G10] to Reelin
由来種	Mouse
アプリケーション	適用あり: WB, IHC (PFA fixed)
種交差性	交差種: Mouse, Rat, Human
免疫原	Fusion protein corresponding to Mouse Reelin aa 150-500. Database link: Q60841
ポジティブ・コントロール	Mouse liver or kidney. Rat brain lysate and Mouse brain membrane lysate. Mouse embryonic cerebral cortex.
特記事項	<p>This product was changed from ascites to tissue culture supernatant on 17 May 2019. Please note that the dilutions may need to be adjusted accordingly. If you have any questions, please do not hesitate to contact our scientific support team.</p> <p>The Life Science industry has been in the grips of a reproducibility crisis for a number of years. Abcam is leading the way in addressing this with our range of recombinant monoclonal antibodies and knockout edited cell lines for gold-standard validation. Please check that this product meets your needs before purchasing.</p> <p>If you have any questions, special requirements or concerns, please send us an inquiry and/or contact our Support team ahead of purchase. Recommended alternatives for this product can be found below, along with publications, customer reviews and Q&As</p>

製品の特性

製品の状態	Liquid
保存方法	Shipped at 4°C. Store at +4°C short term (1-2 weeks). Store at -20°C or -80°C. Avoid freeze / thaw cycle.
バッファー	Preservative: 0.1% Sodium azide Constituents: 1.45% Sodium chloride, 0.242% Tris
精製度	Tissue culture supernatant
特記事項(精製)	Purified from TCS.
ポリ/モノ	モノクローナル

クローン名	G10
アイソタイプ	IgG1
軽鎖の種類	kappa

アプリケーション

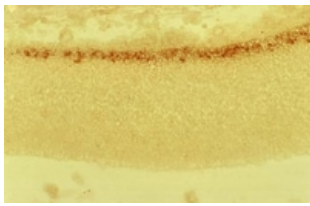
The Abpromise guarantee **Abpromise保証は、次のテスト済みアプリケーションにおけるab78540の使用に適用されます**
 アプリケーションノートには、推奨の開始希釈率がありますが、適切な希釈率につきましてはご検討ください。

アプリケーション	Abreviews	特記事項
WB		Use at an assay dependent concentration. Predicted molecular weight: 388 kDa.
IHC (PFA fixed)		Use at an assay dependent concentration.

ターゲット情報

機能	Extracellular matrix serine protease that plays a role in layering of neurons in the cerebral cortex and cerebellum. Regulates microtubule function in neurons and neuronal migration. Affects migration of sympathetic preganglionic neurons in the spinal cord, where it seems to act as a barrier to neuronal migration. Enzymatic activity is important for the modulation of cell adhesion. Binding to the extracellular domains of lipoprotein receptors VLDLR and LRP8/APOER2 induces tyrosine phosphorylation of DAB1 and modulation of TAU phosphorylation.
組織特異性	Abundantly produced during brain ontogenesis by the Cajal-Retzius cells and other pioneer neurons located in the telencephalic marginal zone and by granule cells of the external granular layer of the cerebellum. In adult brain, preferentially expressed in GABAergic interneurons of prefrontal cortices, temporal cortex, hippocampus and glutamatergic granule cells of cerebellum. Expression is reduced to about 50% in patients with schizophrenia. Also expressed in fetal and adult liver.
関連疾患	Lissencephaly 2
配列類似性	Belongs to the reelin family. Contains 16 BNR repeats. Contains 8 EGF-like domains. Contains 1 reelin domain.
発生段階	Expressed in fetal and postnatal brain and liver. Expression in postnatal human brain is high in the cerebellum.
ドメイン	The basic C-terminal region is essential for secretion.
細胞内局在	Secreted > extracellular space > extracellular matrix.

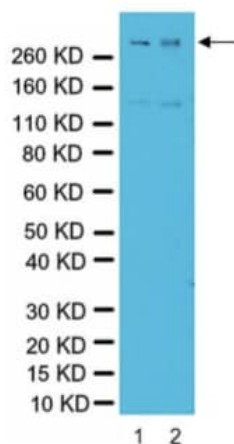
画像



Immunohistochemistry (PFA fixed) - Anti-Reelin antibody [G10] (ab78540)

ab78540, at 1/1000 dilution staining Reelin in embryonic cerebral cortex at 15 days in utero, with the pial surface above and the ventricle below. The positive zone is the Cajal-Retzius cell layer in the marginal zone.

This image was generated using the ascites version of the product.



Western blot - Anti-Reelin antibody [G10] (ab78540)

All lanes : Anti-Reelin antibody [G10] (ab78540) at 1/500 dilution

Lane 1 : Rat brain lysate

Lane 2 : Mouse brain membrane lysate

Secondary

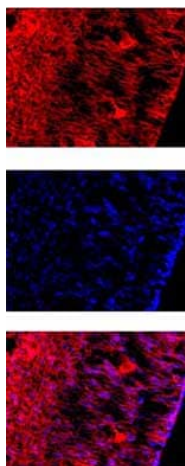
All lanes : Goat anti-mouse secondary antibody conjugated to HRP

Predicted band size: 388 kDa

Observed band size: 388 kDa

Additional bands at: 140 kDa. We are unsure as to the identity of these extra bands.

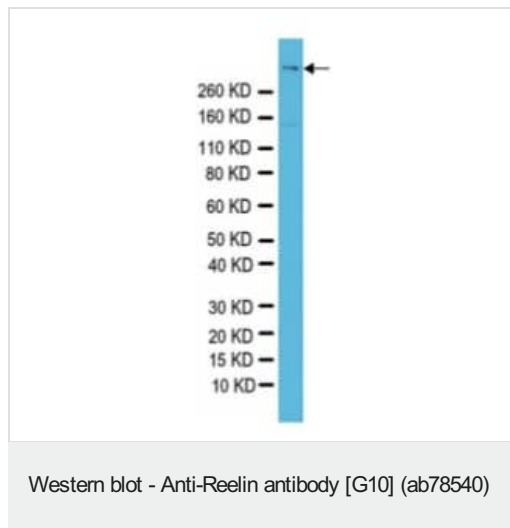
This image was generated using the ascites version of the product.



Immunohistochemistry (PFA fixed) - Anti-Reelin antibody [G10] (ab78540)

Immunolocalization of Reelin (red) in the cortex of e14.5 mouse CNS using ab78540 at 1/1000 dilution. The blue stain is Hoechst nuclear counter stain.

This image was generated using the ascites version of the product.



Anti-Reelin antibody [G10] (ab78540) at 1/500 dilution + Rat brain lysate at 10 μ g

Secondary

Goat anti-mouse secondary antibody conjugated to HRP

Predicted band size: 388 kDa

Observed band size: 388 kDa

This image was generated using the ascites version of the product.

Please note: All products are "FOR RESEARCH USE ONLY. NOT FOR USE IN DIAGNOSTIC PROCEDURES"

Our Abpromise to you: Quality guaranteed and expert technical support

- Replacement or refund for products not performing as stated on the datasheet
- Valid for 12 months from date of delivery
- Response to your inquiry within 24 hours
- We provide support in Chinese, English, French, German, Japanese and Spanish
- Extensive multi-media technical resources to help you
- We investigate all quality concerns to ensure our products perform to the highest standards

If the product does not perform as described on this datasheet, we will offer a refund or replacement. For full details of the Abpromise, please visit <https://www.abcam.co.jp/abpromise> or contact our technical team.

Terms and conditions

- Guarantee only valid for products bought direct from Abcam or one of our authorized distributors