


# Anti-REDD-1/DDIT4 antibody ab106356

**8 References** [画像数 2](#)

### 製品の概要

製品名	Anti-REDD-1/DDIT4 antibody
製品の詳細	Rabbit polyclonal to REDD-1/DDIT4
由来種	Rabbit
アプリケーション	<b>適用あり:</b> ICC/IF, IHC-P <b>適用なし:</b> WB
種交差性	<b>交差種:</b> Mouse <b>交差が予測される動物種:</b> Human 
免疫原	Synthetic peptide corresponding to Human REDD-1/DDIT4 (internal sequence). Database link: <a href="#">NP_061931</a>
ポジティブ・コントロール	IHC-P: Mouse kidney tissue. ICC/IF: Mouse kidney tissue.
特記事項	<p>The Life Science industry has been in the grips of a reproducibility crisis for a number of years. Abcam is leading the way in addressing this with our range of recombinant monoclonal antibodies and knockout edited cell lines for gold-standard validation. Please check that this product meets your needs before purchasing.</p> <p>If you have any questions, special requirements or concerns, please send us an inquiry and/or contact our Support team ahead of purchase. Recommended alternatives for this product can be found below, along with publications, customer reviews and Q&amp;As</p>

### 製品の特性

製品の状態	Liquid
保存方法	Shipped at 4°C. Store at 4°C (stable for up to 12 months).
バッファー	pH: 7.2 Preservative: 0.02% Sodium azide Constituent: PBS
精製度	Immunogen affinity purified
ポリ/モノ	ポリクローナル
アイソタイプ	IgG

### アプリケーション

## The Abpromise guarantee

**Abpromise保証は、次のテスト済みアプリケーションにおけるab106356の使用に適用されます**  
アプリケーションノートには、推奨の開始希釈率がありますが、適切な希釈率につきましてはご検討ください。

アプリケーション	Abreviews	特記事項
ICC/IF		Use at an assay dependent concentration. <b>ICC/IF for Mouse samples only</b>
IHC-P		Use a concentration of 5 µg/ml. Perform heat mediated antigen retrieval via the microwave method before commencing with IHC staining protocol. <b>IHC-P for Mouse samples only</b>

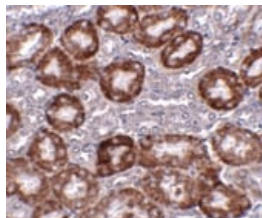
## 追加情報

Is unsuitable for WB.

## ターゲット情報

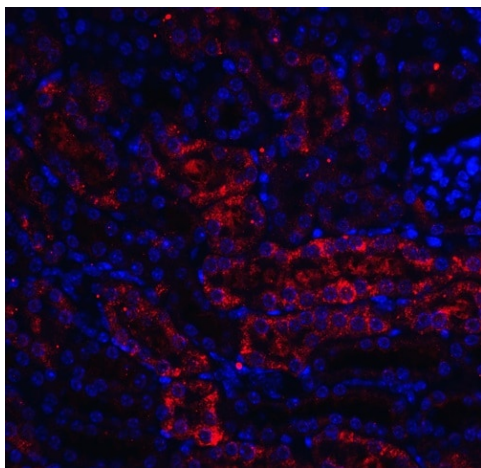
機能	Inhibits cell growth by regulating the TOR signaling pathway upstream of the TSC1-TSC2 complex and downstream of AKT1. Promotes neuronal cell death.
組織特異性	Broadly expressed, with lowest levels in brain, skeletal muscle and intestine. Up-regulated in substantia nigra neurons from Parkinson disease patients (at protein level).
配列類似性	Belongs to the DDIT4 family.
細胞内局在	Cytoplasm.

## 画像



Immunohistochemistry detection of REDD-1/DDIT4 in paraffin embedded mouse kidney tissue section using ab106356 at 5 µg/ml.

Immunohistochemistry (Formalin/PFA-fixed paraffin-embedded sections) - Anti-REDD-1/DDIT4 antibody (ab106356)



Immunofluorescence of REDD-1/DDIT4 in mouse kidney tissue with ab106356 at 20 µg/mL.

Immunocytochemistry/ Immunofluorescence - Anti-REDD-1/DDIT4 antibody (ab106356)

**Please note:** All products are "FOR RESEARCH USE ONLY. NOT FOR USE IN DIAGNOSTIC PROCEDURES"

### Our Abpromise to you: Quality guaranteed and expert technical support

---

- Replacement or refund for products not performing as stated on the datasheet
- Valid for 12 months from date of delivery
- Response to your inquiry within 24 hours
- We provide support in Chinese, English, French, German, Japanese and Spanish
- Extensive multi-media technical resources to help you
- We investigate all quality concerns to ensure our products perform to the highest standards

If the product does not perform as described on this datasheet, we will offer a refund or replacement. For full details of the Abpromise, please visit <https://www.abcam.co.jp/abpromise> or contact our technical team.

### Terms and conditions

---

- Guarantee only valid for products bought direct from Abcam or one of our authorized distributors