


### Anti-Recoverin antibody [6A55CD6] ab31928

★★★★★ [2 Abreviews](#) [4 References](#) [画像数 2](#)

#### 製品の概要

製品名	Anti-Recoverin antibody [6A55CD6]
製品の詳細	Mouse monoclonal [6A55CD6] to Recoverin
由来種	Mouse
アプリケーション	<b>適用あり:</b> WB, IHC-FoFr
種交差性	<b>交差種:</b> Mouse, Rat <b>交差が予測される動物種:</b> Sheep, Cow, Human 
免疫原	Recombinant full length protein corresponding to Human Recoverin.
ポジティブ・コントロール	ab31928 gave a positive result in Mouse Retina Whole Cell Lysate.
特記事項	<p>This antibody clone is manufactured by Abcam. If you require a custom buffer formulation or conjugation for your experiments, please contact <a href="mailto:orders@abcam.com">orders@abcam.com</a>.</p> <p>The Life Science industry has been in the grips of a reproducibility crisis for a number of years. Abcam is leading the way in addressing this with our range of recombinant monoclonal antibodies and knockout edited cell lines for gold-standard validation. Please check that this product meets your needs before purchasing.</p> <p>If you have any questions, special requirements or concerns, please send us an inquiry and/or contact our Support team ahead of purchase. Recommended alternatives for this product can be found below, along with publications, customer reviews and Q&amp;As</p>

#### 製品の特性

製品の状態	Liquid
保存方法	Shipped at 4°C. Store at +4°C short term (1-2 weeks). Upon delivery aliquot. Store at -20°C or -80°C. Avoid freeze / thaw cycle.
バッファー	pH: 7.40 Preservative: 0.02% Sodium azide Constituents: PBS, 6.97% L-Arginine
精製度	Protein G purified
ポリ/モノ	モノクローナル
クローン名	6A55CD6
アイソタイプ	IgG2a

## アプリケーション

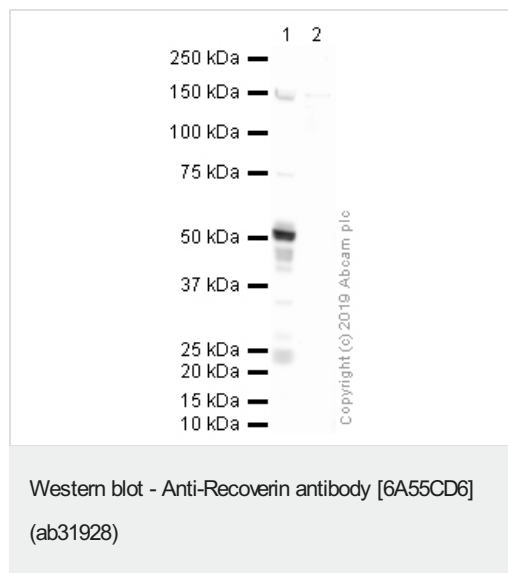
**The Abpromise guarantee** Abpromise保証は、次のテスト済みアプリケーションにおけるab31928の使用に適用されます  
アプリケーションノートには、推奨の開始希釈率がありますが、適切な希釈率につきましてはご検討ください。

アプリケーション	Abreviews	特記事項
WB		Use a concentration of 2 µg/ml. Detects a band of approximately 26 kDa (predicted molecular weight: 23 kDa).
IHC-FoFr	★★★★★ (1)	Use at an assay dependent concentration.

## ターゲット情報

<b>機能</b>	Seems to be implicated in the pathway from retinal rod guanylate cyclase to rhodopsin. May be involved in the inhibition of the phosphorylation of rhodopsin in a calcium-dependent manner. The calcium-bound recoverin prolongs the photoresponse.
<b>組織特異性</b>	Retina and pineal gland.
<b>配列類似性</b>	Belongs to the recoverin family. Contains 4 EF-hand domains.

## 画像



**All lanes** : Anti-Recoverin antibody [6A55CD6] (ab31928) at 5 µg/ml

**Lane 1** : Mouse Retina Whole Cell Lysate

**Lane 2** : Human Retina Normal Tissue Lysate

Lysates/proteins at 10 µg per lane.

### Secondary

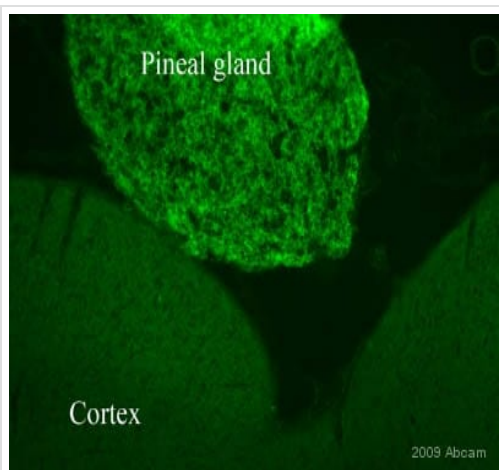
**All lanes** : Goat polyclonal to Mouse IgG H&L Pre-Adsorbed (HRP) at 1/5000 dilution

Developed using the ECL technique.

Performed under reducing conditions.

**Predicted band size:** 23 kDa

**Exposure time:** 8 minutes



Immunohistochemistry (PFA perfusion fixed frozen sections) - Anti-Recoverin antibody [6A55CD6] (ab31928)

This image is courtesy of an Abreview submitted by Dr Sophie Pezet

ab31928 staining Recoverin in rat brain tissue section by Immunohistochemistry (PFA perfusion fixed frozen sections). Tissue underwent fixation in paraformaldehyde without permeation and blocking steps. The primary antibody was diluted, 1/300 (PBS + 0.3% Triton X100) and incubated with sample for 18 hours at 20°C. An Alexa Fluor® 488 conjugated goat polyclonal to mouse IgG, diluted 1/1000 was used as secondary.

**Please note:** All products are "FOR RESEARCH USE ONLY. NOT FOR USE IN DIAGNOSTIC PROCEDURES"

### Our Abpromise to you: Quality guaranteed and expert technical support

---

- Replacement or refund for products not performing as stated on the datasheet
- Valid for 12 months from date of delivery
- Response to your inquiry within 24 hours
  
- We provide support in Chinese, English, French, German, Japanese and Spanish
- Extensive multi-media technical resources to help you
- We investigate all quality concerns to ensure our products perform to the highest standards

If the product does not perform as described on this datasheet, we will offer a refund or replacement. For full details of the Abpromise, please visit <https://www.abcam.co.jp/abpromise> or contact our technical team.

### Terms and conditions

---

- Guarantee only valid for products bought direct from Abcam or one of our authorized distributors