


Anti-RCC2 antibody ab70787

[1 References](#) [画像数 2](#)

製品の概要

製品名	Anti-RCC2 antibody
製品の詳細	Rabbit polyclonal to RCC2
由来種	Rabbit
アプリケーション	適用あり: WB, IP
種交差性	交差種: Mouse, Human 交差が予測される動物種: Cow, Dog, Rhesus monkey, Gorilla, Orangutan, Elephant 
免疫原	Synthetic peptide (Human) corresponding to a region between residues 1 and 50 of human RCC2. (NP_061185.1)
ポジティブ・コントロール	Whole cell lysate from HeLa and 293T cells.
特記事項	<p>The Life Science industry has been in the grips of a reproducibility crisis for a number of years. Abcam is leading the way in addressing this with our range of recombinant monoclonal antibodies and knockout edited cell lines for gold-standard validation. Please check that this product meets your needs before purchasing.</p> <p>If you have any questions, special requirements or concerns, please send us an inquiry and/or contact our Support team ahead of purchase. Recommended alternatives for this product can be found below, along with publications, customer reviews and Q&As</p>

製品の特性

製品の状態	Liquid
保存方法	Shipped at 4°C. Upon delivery aliquot and store at -20°C. Avoid freeze / thaw cycles.
バッファー	pH: 6.8 Preservative: 0.09% Sodium azide Constituents: 0.1% BSA, Tris buffered saline
精製度	Immunogen affinity purified
ポリ/モノ	ポリクローナル
アイソタイプ	IgG

アプリケーション

The Abpromise guarantee

Abpromise保証は、次のテスト済みアプリケーションにおけるab70787の使用に適用されます

アプリケーションノートには、推奨の開始希釈率がありますが、適切な希釈率につきましてはご検討ください。

アプリケーション	Abreviews	特記事項
WB		1/2000 - 1/10000. Detects a band of approximately 56 kDa (predicted molecular weight: 56 kDa).
IP		Use a concentration of 2 - 5 µg/ml.

ターゲット情報

機能

Required for completion of mitosis and cytokinesis. May function as a guanine nucleotide exchange factor for the small GTPase RAC1.

配列類似性

Contains 7 RCC1 repeats.

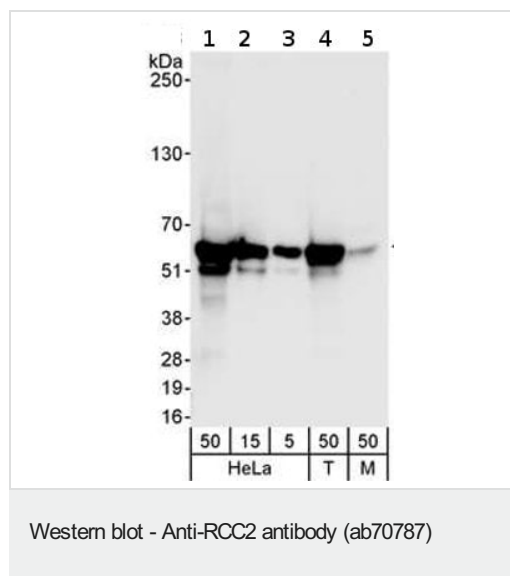
翻訳後修飾

Phosphorylated upon DNA damage, probably by ATM or ATR.

細胞内局在

Nucleus > nucleolus. Chromosome > centromere. Cytoplasm > cytoskeleton > spindle. Appears in the nucleus at G2, then concentrates at the inner centromere region of chromosomes during prophase. Redistributes to the midzone of the mitotic spindle during anaphase. Here, the protein covers the entire equatorial diameter from cortex to cortex.

画像



All lanes : Anti-RCC2 antibody (ab70787) at 0.04 µg/ml

Lane 1 : HeLa whole cell lysate at 50 µg

Lane 2 : HeLa whole cell lysate at 15 µg

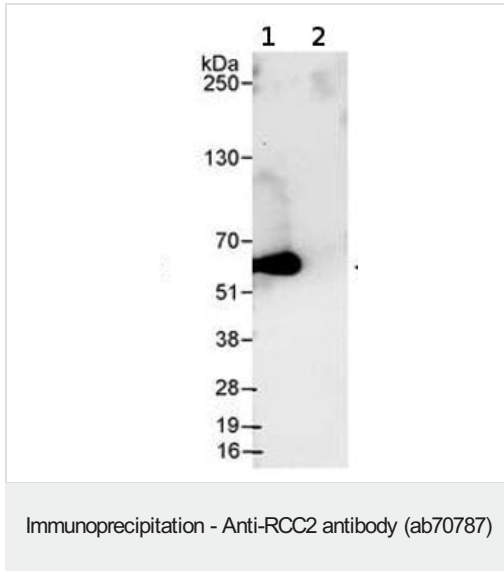
Lane 3 : HeLa whole cell lysate at 5 µg

Lane 4 : 293T whole cell lysate at 50 µg

Lane 5 : NIH3T3 whole cell lysate at 50 µg

Predicted band size: 56 kDa

Observed band size: 56 kDa



HeLa whole cell lysate (1 mg for IP, 20% of IP loaded), with ab70787 at 1 µg/ml for WB, and for IP at 3 µg/mg lysate.
Detection: Chemiluminescence with an exposure time of 10 seconds.

Please note: All products are "FOR RESEARCH USE ONLY. NOT FOR USE IN DIAGNOSTIC PROCEDURES"

Our Abpromise to you: Quality guaranteed and expert technical support

- Replacement or refund for products not performing as stated on the datasheet
- Valid for 12 months from date of delivery
- Response to your inquiry within 24 hours
- We provide support in Chinese, English, French, German, Japanese and Spanish
- Extensive multi-media technical resources to help you
- We investigate all quality concerns to ensure our products perform to the highest standards

If the product does not perform as described on this datasheet, we will offer a refund or replacement. For full details of the Abpromise, please visit <https://www.abcam.co.jp/abpromise> or contact our technical team.

Terms and conditions

- Guarantee only valid for products bought direct from Abcam or one of our authorized distributors