


### Anti-RCC1 antibody ab70749

画像数 3

#### 製品の概要

製品名	Anti-RCC1 antibody
製品の詳細	Goat polyclonal to RCC1
由来種	Goat
アプリケーション	<b>適用あり:</b> IP, WB
種交差性	<b>交差種:</b> Human <b>交差が予測される動物種:</b> Chimpanzee, Rhesus monkey, Gorilla 
免疫原	Synthetic peptide corresponding to Human RCC1 (N terminal). Database link: <a href="#">P18754</a>
ポジティブ・コントロール	WB: Whole cell lysate from HeLa, 293T cells; IP: HeLa whole cell lysate.
特記事項	<p>The Life Science industry has been in the grips of a reproducibility crisis for a number of years. Abcam is leading the way in addressing this with our range of recombinant monoclonal antibodies and knockout edited cell lines for gold-standard validation. Please check that this product meets your needs before purchasing.</p> <p>If you have any questions, special requirements or concerns, please send us an inquiry and/or contact our Support team ahead of purchase. Recommended alternatives for this product can be found below, along with publications, customer reviews and Q&amp;As</p>

#### 製品の特性

製品の状態	Liquid
保存方法	Shipped at 4°C. Upon delivery aliquot and store at -20°C. Avoid freeze / thaw cycles.
バッファー	pH: 7 Preservative: 0.09% Sodium azide Constituents: 1.815% Tris, 1.764% Sodium citrate, 0.021% PBS
精製度	Immunogen affinity purified
ポリ/モノ	ポリクローナル
アイソタイプ	IgG

#### アプリケーション

## The Abpromise guarantee

Abpromise保証は、次のテスト済みアプリケーションにおけるab70749の使用に適用されます

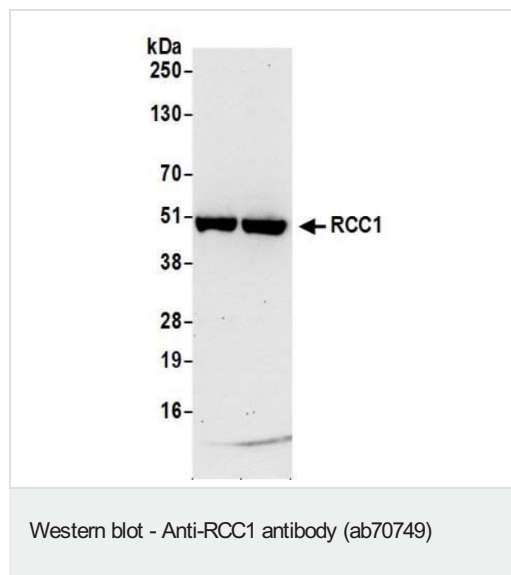
アプリケーションノートには、推奨の開始希釈率がありますが、適切な希釈率につきましてはご確認ください。

アプリケーション	Abreviews	特記事項
IP		Use at 1-2 µg/mg of lysate.
WB		1/2000 - 1/10000. Detects a band of approximately 45 kDa (predicted molecular weight: 45 kDa).

## ターゲット情報

機能	Guanine-nucleotide releasing factor that promotes the exchange of Ran-bound GDP by GTP. Involved in the regulation of onset of chromosome condensation in the S phase. Binds both to the nucleosomes and double-stranded DNA. RCC1-Ran complex (together with other proteins) acts as a component of a signal transmission pathway that detects unreplicated DNA. Plays a key role in nucleo-cytoplasmic transport, mitosis and nuclear-envelope assembly.
配列類似性	Contains 7 RCC1 repeats.
翻訳後修飾	N-terminal methylation by METTL11A/NTM1 is required for binding double-stranded DNA and stable chromatin association. Di- and trimethylation produce a permanent positive charge on the amino group, which facilitate electrostatic binding to the phosphate groups on DNA, while inhibiting histone-binding. Methylated tail helps retain RCC1 on chromosomes during nucleotide exchange on Ran.
細胞内局在	Nucleus. Cytoplasm. Becomes dispersed throughout the cytoplasm during mitosis.

## 画像



**All lanes :** Anti-RCC1 antibody (ab70749) at 0.1 µg/ml

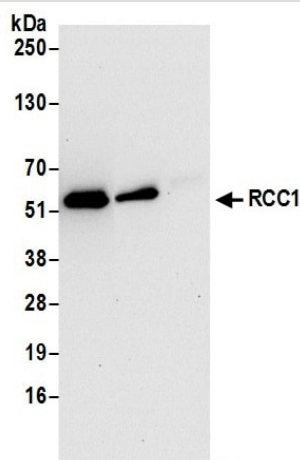
**Lane 1 :** HeLa whole cell lysate

**Lane 2 :** HEK-293T whole cell lysate

Lysates/proteins at 50 µg per lane.

**Predicted band size:** 45 kDa

Chemiluminescence with an exposure time of 30 seconds.



Immunoprecipitation - Anti-RCC1 antibody (ab70749)

Detection of human RCC1 by western blot of immunoprecipitates.  
Whole cell lysate (0.5 or 1.0 mg per IP reaction; 20% of IP loaded) from HeLa cells prepared using NETN lysis buffer.

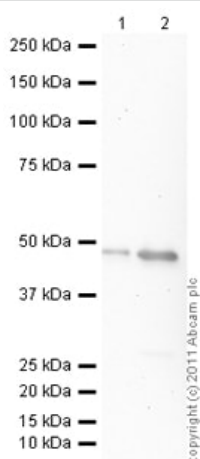
**Lane 1:** Anti-RCC1 antibody ab70749 used for IP at 6 µg per reaction

**Lane 2:** Anti-RCC1 antibody, [ab245594](#)

**Lane 3:** IgG Control

For blotting immunoprecipitated RCC1, ab70749 was used at 1 µg/mL.

**Detection:** Chemiluminescence with an exposure time of 30 seconds.



Western blot - Anti-RCC1 antibody (ab70749)

**All lanes :** Anti-RCC1 antibody (ab70749) at 1/2000 dilution

**Lane 1 :** Recombinant Human RCC1 protein ([ab90625](#)) at 0.01 µg

**Lane 2 :** Recombinant Human RCC1 protein ([ab90625](#)) at 0.1 µg

### Secondary

**All lanes :** Rabbit polyclonal to Goat IgG - H&L - Pre-Adsorbed (HRP) ([ab65486](#)) at 1/3000 dilution (Rabbit polyclonal to Goat IgG - H&L - Pre-Adsorbed (HRP))

Developed using the ECL technique.

Performed under reducing conditions.

**Predicted band size:** 45 kDa

**Exposure time:** 8 minutes

**Please note:** All products are "FOR RESEARCH USE ONLY. NOT FOR USE IN DIAGNOSTIC PROCEDURES"

### Our Abpromise to you: Quality guaranteed and expert technical support

- Replacement or refund for products not performing as stated on the datasheet
- Valid for 12 months from date of delivery
- Response to your inquiry within 24 hours

- We provide support in Chinese, English, French, German, Japanese and Spanish
- Extensive multi-media technical resources to help you
- We investigate all quality concerns to ensure our products perform to the highest standards

If the product does not perform as described on this datasheet, we will offer a refund or replacement. For full details of the Abpromise, please visit <https://www.abcam.co.jp/abpromise> or contact our technical team.

#### **Terms and conditions**

---

- Guarantee only valid for products bought direct from Abcam or one of our authorized distributors