


Anti-RC3H1 antibody ab70196

1 References 画像数 2

製品の概要

製品名	Anti-RC3H1 antibody
製品の詳細	Rabbit polyclonal to RC3H1
由来種	Rabbit
アプリケーション	適用あり: WB, IP
種交差性	交差種: Human 交差が予測される動物種: Pig, Chimpanzee, Rhesus monkey, Gorilla, Orangutan, Bat 
免疫原	Synthetic peptide corresponding to a region between C terminal residues 1075 and 1133 of human RC3H1 (NP_742068.1)
ポジティブ・コントロール	HeLa and 293T whole cell lysates.
特記事項	<p>The Life Science industry has been in the grips of a reproducibility crisis for a number of years. Abcam is leading the way in addressing this with our range of recombinant monoclonal antibodies and knockout edited cell lines for gold-standard validation. Please check that this product meets your needs before purchasing.</p> <p>If you have any questions, special requirements or concerns, please send us an inquiry and/or contact our Support team ahead of purchase. Recommended alternatives for this product can be found below, along with publications, customer reviews and Q&As</p>

製品特性

製品の状態	Liquid
保存方法	Shipped at 4°C. Upon delivery aliquot and store at -20°C. Avoid freeze / thaw cycles.
バッファー	pH: 6.8 Preservative: 0.09% Sodium azide Constituents: 0.1% BSA, Tris buffered saline
精製度	Immunogen affinity purified
特記事項(精製)	ab70196 was affinity purified using an epitope specific to RC3H1 immobilized on solid support.
ポリ/モノ	ポリクローナル
アイソタイプ	IgG

The Abpromise guarantee Abpromise保証は、 次のテスト済みアプリケーションにおけるab70196の使用に適用されます
アプリケーションノートには、推奨の開始希釈率がありますが、適切な希釈率につきましてはご検討ください。

アプリケーション	Abreviews	特記事項
WB		
IP		

追加情報

IP: Use at 2-5µg/mg of lysate.
WB: 1/1000 - 1/10000. Detects a band of approximately 150 kDa (predicted molecular weight: 126 kDa).

Not yet tested in other applications.
Optimal dilutions/concentrations should be determined by the end user.

ターゲット情報

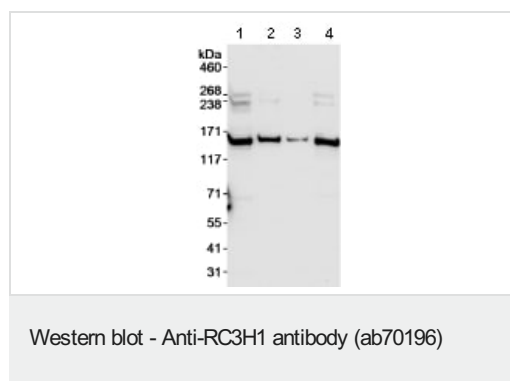
機能 Represses ICOS function, an essential costimulatory receptor for follicular T-cells. May act as an ubiquitin ligase that regulates ubiquitin-dependent control of AU-rich mRNAs by AUF1/HNRPD and HUR/ELAVL1.

組織特異性 Widely expressed. Expressed at higher level in cerebellum, spleen, ovary and liver.

配列類似性 Contains 1 C3H1-type zinc finger.
Contains 1 RING-type zinc finger.

細胞内局在 Cytoplasm. Localizes to cytosolic RNA granules, which are sites for regulating mRNA translation and decay, suggesting that it may bind RNA.

画像



All lanes : Anti-RC3H1 antibody (ab70196) at 0.04 µg/ml

Lane 1 : HeLa whole cell lysate at 50 µg

Lane 2 : HeLa whole cell lysate at 15 µg

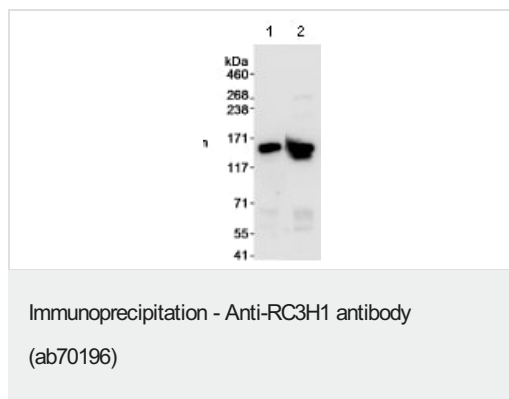
Lane 3 : HeLa whole cell lysate at 5 µg

Lane 4 : 293T whole cell lysate at 50 µg

Predicted band size: 126 kDa

Observed band size: 150 kDa

Exposure time: 30 seconds



Western Blot showing Lane 2: ab70196 at 0.04µg/ml staining RC3H1 in HeLa whole cell lysates immunoprecipitated using ab70196 at 3µg/mg lysate (1 mg/IP; 1/4 of IP loaded/lane). Lane 1: an irrelevant antibody was used for immunoprecipitation. Detection: Chemiluminescence with an exposure time of 30 seconds.

Please note: All products are "FOR RESEARCH USE ONLY. NOT FOR USE IN DIAGNOSTIC PROCEDURES"

Our Abpromise to you: Quality guaranteed and expert technical support

- Replacement or refund for products not performing as stated on the datasheet
- Valid for 12 months from date of delivery
- Response to your inquiry within 24 hours
- We provide support in Chinese, English, French, German, Japanese and Spanish
- Extensive multi-media technical resources to help you
- We investigate all quality concerns to ensure our products perform to the highest standards

If the product does not perform as described on this datasheet, we will offer a refund or replacement. For full details of the Abpromise, please visit <https://www.abcam.co.jp/abpromise> or contact our technical team.

Terms and conditions

- Guarantee only valid for products bought direct from Abcam or one of our authorized distributors