

Anti-RC3H1 antibody ab70195

画像数 3

製品の概要

製品名	Anti-RC3H1 antibody
製品の詳細	Rabbit polyclonal to RC3H1
由来種	Rabbit
アプリケーション	適用あり: WB, IP
種交差性	交差種: Mouse, Human 交差が予測される動物種: Horse, Pig, Chimpanzee, Rhesus monkey, Gorilla, Chinese hamster, Orangutan, Elephant 
免疫原	Synthetic peptide corresponding to a region between residues 500 and 550 of human RC3H1
ポジティブ・コントロール	WB: HeLa and 293T whole cell lysates; TCMK-1, 4T1, CT25.WT IP: HeLa whole cell lysate.
特記事項	<p>The Life Science industry has been in the grips of a reproducibility crisis for a number of years. Abcam is leading the way in addressing this with our range of recombinant monoclonal antibodies and knockout edited cell lines for gold-standard validation. Please check that this product meets your needs before purchasing.</p> <p>If you have any questions, special requirements or concerns, please send us an inquiry and/or contact our Support team ahead of purchase. Recommended alternatives for this product can be found below, along with publications, customer reviews and Q&As</p>

製品の特性

製品の状態	Liquid
保存方法	Shipped at 4°C. Upon delivery aliquot and store at -20°C. Avoid freeze / thaw cycles.
バッファー	<p>pH: 7</p> <p>Preservative: 0.09% Sodium azide</p> <p>Constituents: 1.815% Tris, 1.764% Sodium citrate, 0.021% PBS</p>
精製度	Immunogen affinity purified
特記事項(精製)	ab70195 was affinity purified using an epitope specific to RC3H1 immobilized on solid support.
ポリ/モノ	ポリクローナル
アイソタイプ	IgG

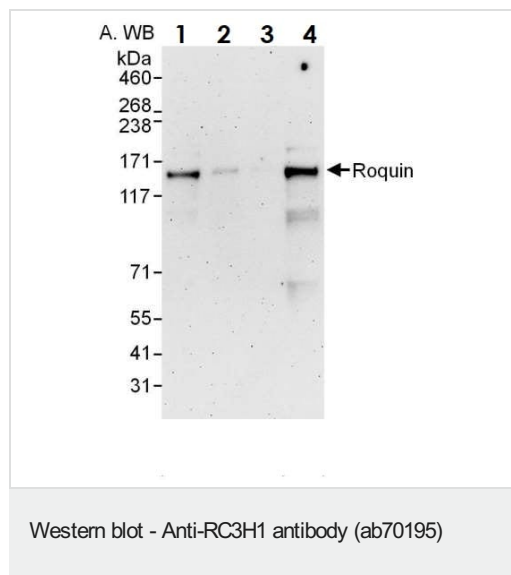
The Abpromise guarantee **Abpromise保証は、** 次のテスト済みアプリケーションにおけるab70195の使用に適用されます
アプリケーションノートには、推奨の開始希釈率がありますが、適切な希釈率につきましてはご検討ください。

アプリケーション	Abreviews	特記事項
WB		1/500 - 1/5000. Detects a band of approximately 150 kDa (predicted molecular weight: 126 kDa).
IP		Use at 2-5 µg/mg of lysate.

ターゲット情報

機能	Represses ICOS function, an essential costimulatory receptor for follicular T-cells. May act as an ubiquitin ligase that regulates ubiquitin-dependent control of AU-rich mRNAs by AUF1/HNRPD and HUR/ELAVL1.
組織特異性	Widely expressed. Expressed at higher level in cerebellum, spleen, ovary and liver.
配列類似性	Contains 1 C3H1-type zinc finger. Contains 1 RING-type zinc finger.
細胞内局在	Cytoplasm. Localizes to cytosolic RNA granules, which are sites for regulating mRNA translation and decay, suggesting that it may bind RNA.

画像



All lanes : Anti-RC3H1 antibody (ab70195) at 0.1 µg/ml

Lane 1 : HeLa whole cell lysate at 50 µg

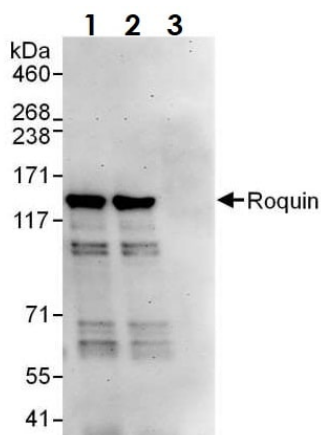
Lane 2 : HeLa whole cell lysate at 15 µg

Lane 3 : HeLa whole cell lysate at 5 µg

Lane 4 : HEK293T whole cell lysate at 50 µg

Predicted band size: 126 kDa

Exposure time: 3 minutes



Immunoprecipitation - Anti-RC3H1 antibody
(ab70195)

RC3H1 was immunoprecipitated from HeLa whole cell lysate (1 mg per IP reaction, 20% loaded) with ab70195 at 6 µg per reaction.

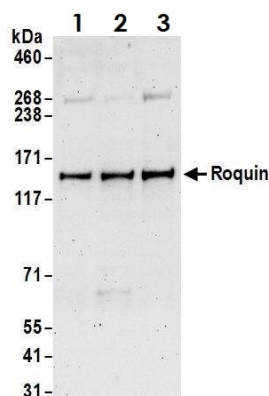
Western blot was performed on the immunoprecipitate using ab70195 at 0.1 µg/mL.

Lane 1: ab70195 IP in HeLa whole cell lysate.

Lane 2: ab70195 IP in HeLa whole cell lysate.

Lane 3: Control IgG in HeLa whole cell lysate.

Detection: Chemiluminescence with an exposure time of 3 minutes



Western blot - Anti-RC3H1 antibody (ab70195)

All lanes : Anti-RC3H1 antibody (ab70195) at 2 µg/ml

Lane 1 : TCMK-1 (mouse kidney epithelial cell line) whole cell lysate

Lane 2 : 4T1 (Mouse mammary gland carcinoma cell line) whole cell lysate

Lane 3 : CT26.WT (Murine Colon Carcinoma) whole cell lysate

Lysates/proteins at 50 µg per lane.

Predicted band size: 126 kDa

Exposure time: 3 minutes

Please note: All products are "FOR RESEARCH USE ONLY. NOT FOR USE IN DIAGNOSTIC PROCEDURES"

Our Abpromise to you: Quality guaranteed and expert technical support

- Replacement or refund for products not performing as stated on the datasheet
- Valid for 12 months from date of delivery
- Response to your inquiry within 24 hours

- We provide support in Chinese, English, French, German, Japanese and Spanish
- Extensive multi-media technical resources to help you
- We investigate all quality concerns to ensure our products perform to the highest standards

If the product does not perform as described on this datasheet, we will offer a refund or replacement. For full details of the Abpromise, please visit <https://www.abcam.co.jp/abpromise> or contact our technical team.

Terms and conditions

- Guarantee only valid for products bought direct from Abcam or one of our authorized distributors