

Anti-RBPJK antibody ab25949

★★★★★ [9 Abreviews](#) [36 References](#) [画像数 4](#)

製品の概要

製品名	Anti-RBPJK antibody
製品の詳細	Rabbit polyclonal to RBPJK
由来種	Rabbit
アプリケーション	適用あり: IP, WB
種交差性	交差種: Mouse, Human
免疫原	Synthetic peptide conjugated to KLH derived from within residues 450 to the C-terminus of Human RBPJK. Immunogen の所有権に関して (Peptides available as ab26893)
特記事項	<p>The Life Science industry has been in the grips of a reproducibility crisis for a number of years. Abcam is leading the way in addressing this with our range of recombinant monoclonal antibodies and knockout edited cell lines for gold-standard validation. Please check that this product meets your needs before purchasing.</p> <p>If you have any questions, special requirements or concerns, please send us an inquiry and/or contact our Support team ahead of purchase. Recommended alternatives for this product can be found below, along with publications, customer reviews and Q&As</p>

製品の特性

製品の状態	Liquid
保存方法	Shipped at 4°C. Store at +4°C short term (1-2 weeks). Upon delivery aliquot. Store at -20°C or -80°C. Avoid freeze / thaw cycle.
バッファー	pH: 7.40 Preservative: 0.02% Sodium azide Constituent: PBS
精製度	Immunogen affinity purified
ポリ/モノ	ポリクローナル
アイソタイプ	IgG

Batches of this product that have a concentration < 1mg/ml may have BSA added as a stabilising agent. If you would like information about the formulation of a specific lot, please contact our scientific support team who will be happy to help.

アプリケーション

The Abpromise guarantee Abpromise保証は、次のテスト済みアプリケーションにおけるab25949の使用に適用されます
アプリケーションノートには、推奨の開始希釈率がありますが、適切な希釈率につきましてはご検討ください。

アプリケーション	Abreviews	特記事項
IP		Use a concentration of 5 µg/ml.
WB	★★★★★ (5)	Use a concentration of 1 µg/ml. Detects a band of approximately 56 kDa (predicted molecular weight: 56 kDa).

ターゲット情報

機能

Transcriptional regulator that plays a central role in Notch signaling, a signaling pathway involved in cell-cell communication that regulates a broad spectrum of cell-fate determinations. Acts as a transcriptional repressor when it is not associated with Notch proteins. When associated with some NICD product of Notch proteins (Notch intracellular domain), it acts as a transcriptional activator that activates transcription of Notch target genes. Probably represses or activates transcription via the recruitment of chromatin remodeling complexes containing histone deacetylase or histone acetylase proteins, respectively. Specifically binds to the immunoglobulin kappa-type J segment recombination signal sequence.

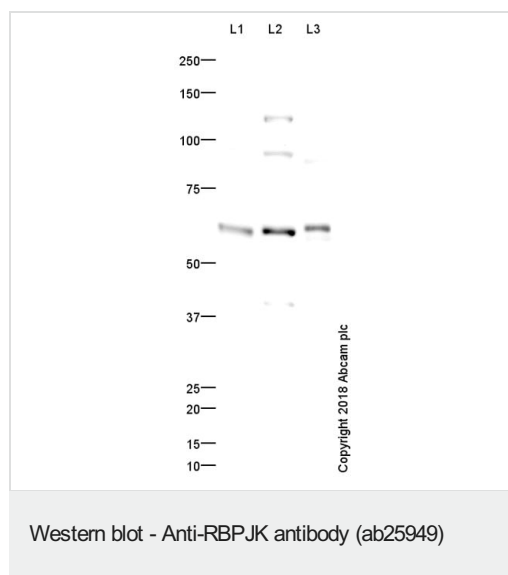
配列類似性

Belongs to the Su(H) family.
Contains 1 IPT/TIG domain.

細胞内局在

Nucleus. Cytoplasm. Mainly nuclear, upon interaction with RITA/C12orf52, translocates to the cytoplasm, down-regulating the Notch signaling pathway.

画像



All lanes : ab25949 at 1 µg/ml

Lane 1 : Testis (Human) Tissue Lysate at 20 µg

Lane 2 : Testis (Mouse) Tissue Lysate at 20 µg

Lane 3 : HeLa (Human) Whole cell lysate at 10 µg

Secondary

All lanes : Anti-Rabbit IgG VHH Single Domain (HRP) at 1/50000 dilution

Developed using the ECL technique.

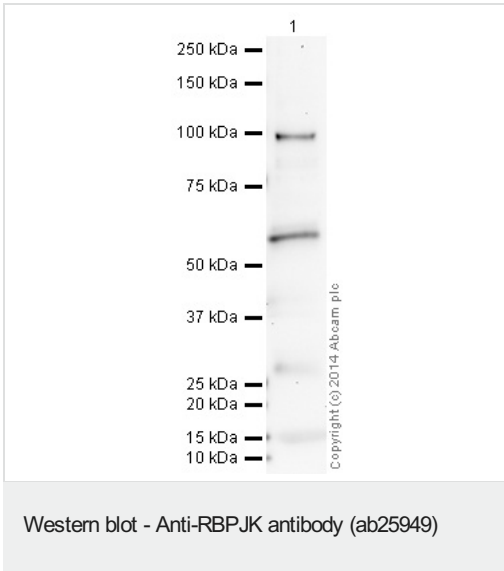
Performed under reducing conditions.

Predicted band size: 56 kDa

Observed band size: 60 kDa

Exposure time: 20 minutes

Abcam recommends using milk as the blocking agent. Abcam welcomes customer feedback and would appreciate any comments regarding this product and the data presented above.



Anti-RBPJK antibody (ab25949) at 1 μ g/ml + Human pancreas tissue lysate - total protein (**ab29816**) at 20 μ g

Secondary

Anti-Rabbit IgG VHH Single Domain (HRP) (**ab191866**) at 1/50000 dilution

Developed using the ECL technique.

Performed under reducing conditions.

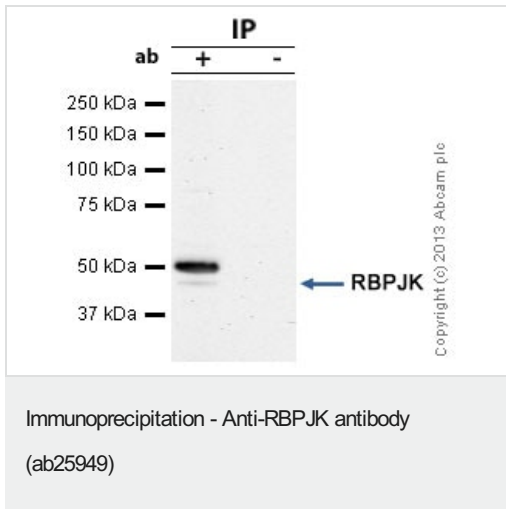
Predicted band size: 56 kDa

Observed band size: 56 kDa

Additional bands at: 98 kDa. We are unsure as to the identity of these extra bands.

Exposure time: 16 minutes

This blot was produced using a 4-12% Bis-tris gel under the MOPS buffer system. The gel was run at 200V for 50 minutes before being transferred onto a Nitrocellulose membrane at 30V for 70 minutes. The membrane was then blocked for an hour using 2% Bovine Serum Albumin before being incubated with ab25949 overnight at 4°C. Antibody binding was detected using an anti-rabbit IgG VHH single domain antibody conjugated to HRP (**ab191866**), and visualised using ECL development solution **ab133406**.



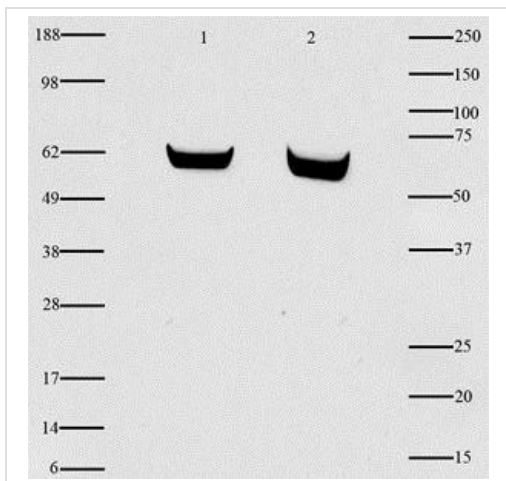
RBPJK was immunoprecipitated using 0.5mg PANC1 whole cell extract, 5µg of Rabbit polyclonal to RBPJK and 50µl of protein G magnetic beads (+). No antibody was added to the control (-).

The antibody was incubated under agitation with Protein G beads for 10min, PANC1 whole cell extract lysate diluted in RIPA buffer was added to each sample and incubated for a further 10min under agitation.

Proteins were eluted by addition of 40µl SDS loading buffer and incubated for 10min at 70°C; 10µl of each sample was separated on a SDS PAGE gel, transferred to a nitrocellulose membrane, blocked with 5% BSA and probed with ab25949.

Secondary: Mouse monoclonal [SB62a] Secondary Antibody to Rabbit IgG light chain (HRP) ([ab99697](#)).

Band: 56kDa, non specific bands -50kDa: This extra band is heavy chain contamination; RBPJK



Western blot - Anti-RBPJK antibody (ab25949)

This image is courtesy of an Abreview submitted by JK Farmaha

All lanes : Anti-RBPJK antibody (ab25949) at 1/500 dilution

Lane 1 : Mouse myoblast C2C12 whole cell lysate at 50 µg

Lane 2 : Mouse myoblast C2C12 whole cell lysate at 75 µg

Secondary

All lanes : HRP-conjugated Goat anti-rabbit at 1/2000 dilution

Developed using the ECL technique.

Performed under reducing conditions.

Predicted band size: 56 kDa

Observed band size: 56 kDa

Exposure time: 1 minute

Our Abpromise to you: Quality guaranteed and expert technical support

- Replacement or refund for products not performing as stated on the datasheet
- Valid for 12 months from date of delivery
- Response to your inquiry within 24 hours

- We provide support in Chinese, English, French, German, Japanese and Spanish
- Extensive multi-media technical resources to help you
- We investigate all quality concerns to ensure our products perform to the highest standards

If the product does not perform as described on this datasheet, we will offer a refund or replacement. For full details of the Abpromise, please visit <https://www.abcam.co.jp/abpromise> or contact our technical team.

Terms and conditions

- Guarantee only valid for products bought direct from Abcam or one of our authorized distributors