


Anti-RBM27 antibody ab84563

画像数 2

製品の概要

製品名	Anti-RBM27 antibody
製品の詳細	Rabbit polyclonal to RBM27
由来種	Rabbit
アプリケーション	適用あり: IHC-P
種交差性	交差種: Human 交差が予測される動物種: Chimpanzee, Rhesus monkey, Gorilla, Orangutan 
免疫原	Synthetic peptide within Human RBM27 aa 700-800. The exact immunogen sequence used to generate this antibody is proprietary information. If additional detail on the immunogen is needed to determine the suitability of the antibody for your needs, please contact our Scientific Support team to discuss your requirements. Database link: Q9P2N5
ポジティブ・コントロール	human Breast Carcinoma and Prostate Carcinoma.
特記事項	<p>The Life Science industry has been in the grips of a reproducibility crisis for a number of years. Abcam is leading the way in addressing this with our range of recombinant monoclonal antibodies and knockout edited cell lines for gold-standard validation. Please check that this product meets your needs before purchasing.</p> <p>If you have any questions, special requirements or concerns, please send us an inquiry and/or contact our Support team ahead of purchase. Recommended alternatives for this product can be found below, along with publications, customer reviews and Q&As</p>

製品の特性

製品の状態	Liquid
保存方法	Shipped at 4°C. Upon delivery aliquot and store at -20°C. Avoid freeze / thaw cycles.
バッファー	pH: 6.8 Preservative: 0.09% Sodium azide Constituents: 0.1% BSA, Tris buffered saline
精製度	Immunogen affinity purified
ポリ/モノ	ポリクローナル
アイソタイプ	IgG

アプリケーション

The Abpromise guarantee **Abpromise保証は、** 次のテスト済みアプリケーションにおけるab84563の使用に適用されず
アプリケーションノートには、推奨の開始希釈率がありますが、適切な希釈率につきましてはご検討ください。

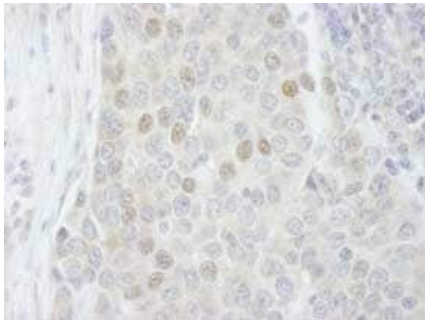
アプリケーション	Abreviews	特記事項
IHC-P		1/100 - 1/500. Epitope exposure is recommended. Epitope exposure with citrate buffer will enhance staining.

ターゲット情報

関連性 RBM27 (RNA-binding protein 27) contains one C3H1-type zinc finger and one RRM (RNA recognition motif) domain. The RRM domain mediates integration into cytospeckles.

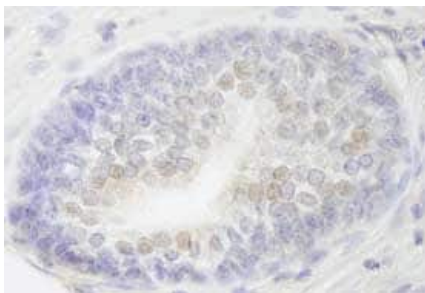
細胞内局在 Cytoplasm. Nucleus speckle. Note: Incorporated into the nuclear speckles and to speckles proximal to the nuclear periphery. Also localizes to punctate structures in the cytoplasm termed cytospeckles.

画像



Immunohistochemistry (Formalin/PFA-fixed paraffin-embedded sections) - Anti-RBM27 antibody (ab84563)

ab84563, at 1/250 dilution, staining RBM27 in formalin-fixed, paraffin-embedded human breast carcinoma by Immunohistochemistry, using DAB detection.



Immunohistochemistry (Formalin/PFA-fixed paraffin-embedded sections) - Anti-RBM27 antibody (ab84563)

ab84563, at 1/250 dilution, staining RBM27 in formalin-fixed, paraffin-embedded human prostate carcinoma by Immunohistochemistry, using DAB detection.

Please note: All products are "FOR RESEARCH USE ONLY. NOT FOR USE IN DIAGNOSTIC PROCEDURES"

Our Abpromise to you: Quality guaranteed and expert technical support

- Replacement or refund for products not performing as stated on the datasheet
- Valid for 12 months from date of delivery
- Response to your inquiry within 24 hours
- We provide support in Chinese, English, French, German, Japanese and Spanish
- Extensive multi-media technical resources to help you
- We investigate all quality concerns to ensure our products perform to the highest standards

If the product does not perform as described on this datasheet, we will offer a refund or replacement. For full details of the Abpromise, please visit <https://www.abcam.co.jp/abpromise> or contact our technical team.

Terms and conditions

- Guarantee only valid for products bought direct from Abcam or one of our authorized distributors