


Anti-RBM25 antibody ab72237

★★★★★ [1 Abreviews](#) [4 References](#) [画像数 3](#)

製品の概要

製品名	Anti-RBM25 antibody
製品の詳細	Rabbit polyclonal to RBM25
由来種	Rabbit
アプリケーション	適用あり: WB, IP, IHC-P
種交差性	交差種: Mouse, Human 交差が予測される動物種: Rat, Rabbit, Horse, Chicken, Guinea pig, Cow, Dog, Turkey, Pig, Chimpanzee, Rhesus monkey, Gorilla, Platypus 
免疫原	Synthetic peptide from a region between residue 475 and 525 of human RBM25
ポジティブ・コントロール	Whole cell lysate from Hela cells.
特記事項	<p>The Life Science industry has been in the grips of a reproducibility crisis for a number of years. Abcam is leading the way in addressing this with our range of recombinant monoclonal antibodies and knockout edited cell lines for gold-standard validation. Please check that this product meets your needs before purchasing.</p> <p>If you have any questions, special requirements or concerns, please send us an inquiry and/or contact our Support team ahead of purchase. Recommended alternatives for this product can be found below, along with publications, customer reviews and Q&As</p>

製品の特性

製品の状態	Liquid
保存方法	Shipped at 4°C. Upon delivery aliquot and store at -20°C. Avoid freeze / thaw cycles.
バッファー	pH: 6.8 Preservative: 0.09% Sodium azide Constituents: 0.1% BSA, Tris buffered saline
精製度	Immunogen affinity purified
特記事項 (精製)	Antibody was affinity purified using an epitope specific to BTAF1 immobilized on solid support
ポリ/モノ	ポリクローナル
アイソタイプ	IgG

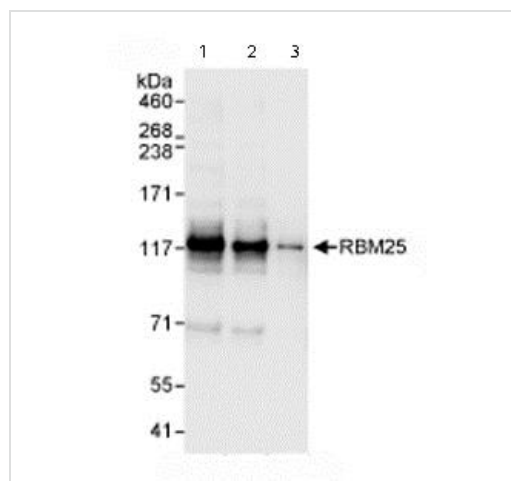
The Abpromise guarantee **Abpromise保証は、** 次のテスト済みアプリケーションにおけるab72237の使用に適用されます
 アプリケーションノートには、推奨の開始希釈率がありますが、適切な希釈率につきましてはご検討ください。

アプリケーション	Abreviews	特記事項
WB	★★★★★ (1)	1/2000 - 1/10000. Detects a band of approximately 71, 117 kDa (predicted molecular weight: 94 kDa).
IP		Use at 2-5 µg/mg of lysate.
IHC-P		1/200 - 1/1000. Perform heat mediated antigen retrieval with citrate buffer pH 6 before commencing with IHC staining protocol.

ターゲット情報

機能	RNA-binding protein that acts as a regulator of alternative pre-mRNA splicing. Involved in apoptotic cell death through the regulation of the apoptotic factor BCL2L1 isoform expression. Modulates the ratio of proapoptotic BCL2L1 isoform S to antiapoptotic BCL2L1 isoform L mRNA expression. When overexpressed, stimulates proapoptotic BCL2L1 isoform S 5'-splice site (5'-ss) selection, whereas its depletion caused the accumulation of antiapoptotic BCL2L1 isoform L. Promotes BCL2L1 isoform S 5'-ss usage through the 5'-CGGGCA-3' RNA sequence. Its association with LUC7L3 promotes U1 snRNP binding to a weak 5' ss in a 5'-CGGGCA-3'-dependent manner. Binds to the exonic splicing enhancer 5'-CGGGCA-3' RNA sequence located within exon 2 of the BCL2L1 pre-mRNA.
配列類似性	Contains 1 PWI domain. Contains 1 RRM (RNA recognition motif) domain.
翻訳後修飾	Sumoylated.
細胞内局在	Nucleus speckle. Cytoplasm. Colocalizes predominantly, with SFRS2 and LUC7L3 splicing factors, in nuclear speckles. Cytoplasmic localization is faint.

画像



All lanes : Anti-RBM25 antibody (ab72237) at 0.04 µg/ml

Lane 1 : Whole cell lysate from HeLa cells at 50 µg

Lane 2 : Whole cell lysate from HeLa cells at 15 µg

Lane 3 : Whole cell lysate from HeLa cells at 5 µg

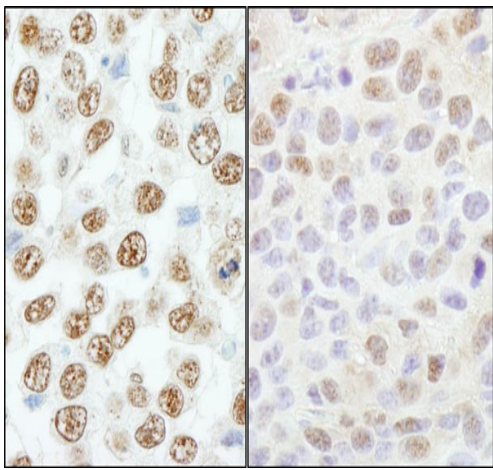
Predicted band size: 94 kDa

Observed band size: 117 kDa

Additional bands at: 71 kDa. We are unsure as to the identity of these extra bands.

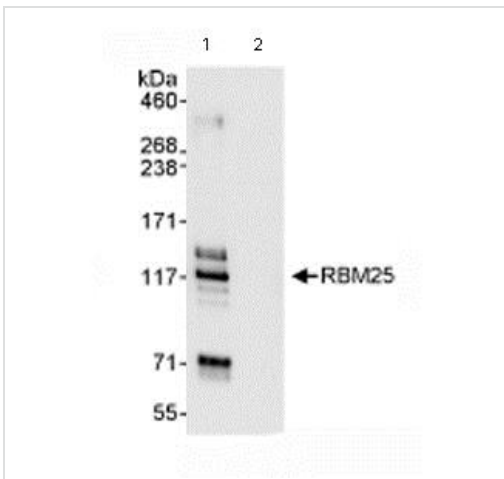
Western blot - Anti-RBM25 antibody (ab72237)

Various other bands are detected.



Immunohistochemistry (Formalin/PFA-fixed paraffin-embedded sections) - Anti-RBM25 antibody (ab72237)

Immunohistochemistry (Formalin/PFA-fixed paraffin-embedded sections) analysis of human testicular seminoma (left) and mouse CT26 colon carcinoma (right) tissues labelling RBM25 with ab72237 at 1/200 (1 μ g/ml). Detection: DAB.



Immunoprecipitation - Anti-RBM25 antibody (ab72237)

Immunoprecipitation/ Western Blot of RBM25.

Lane 1: ab72237 at 3 μ g/mg whole cell lysate.

Lane 2: Control IgG.

ab72237 at 1 μ g/ml for WB.

Whole cell lysate from HeLa cells at 1mg for IP, 20% of IP loaded.

Chemiluminescence with an exposure time of 3 seconds.

Please note: All products are "FOR RESEARCH USE ONLY. NOT FOR USE IN DIAGNOSTIC PROCEDURES"

Our Promise to you: Quality guaranteed and expert technical support

- Replacement or refund for products not performing as stated on the datasheet
- Valid for 12 months from date of delivery
- Response to your inquiry within 24 hours
- We provide support in Chinese, English, French, German, Japanese and Spanish
- Extensive multi-media technical resources to help you
- We investigate all quality concerns to ensure our products perform to the highest standards

If the product does not perform as described on this datasheet, we will offer a refund or replacement. For full details of the Abpromise, please visit <https://www.abcam.co.jp/abpromise> or contact our technical team.

Terms and conditions

- Guarantee only valid for products bought direct from Abcam or one of our authorized distributors