

Anti-Rbm15/OTT antibody ab96544

2 References [画像数 2](#)

製品の概要

製品名	Anti-Rbm15/OTT antibody
製品の詳細	Rabbit polyclonal to Rbm15/OTT
由来種	Rabbit
アプリケーション	適用あり: WB, ICC/IF
種交差性	交差種: Human 交差が予測される動物種: Mouse 
免疫原	Recombinant fragment corresponding to Human Rbm15/OTT aa 146-395. Database link: NP_073605
ポジティブ・コントロール	WB: A431, H1299 and Hela cell lyses IHC-P: HeLa cells
特記事項	<p>The Life Science industry has been in the grips of a reproducibility crisis for a number of years. Abcam is leading the way in addressing this with our range of recombinant monoclonal antibodies and knockout edited cell lines for gold-standard validation. Please check that this product meets your needs before purchasing.</p> <p>If you have any questions, special requirements or concerns, please send us an inquiry and/or contact our Support team ahead of purchase. Recommended alternatives for this product can be found below, along with publications, customer reviews and Q&As</p>

製品の特性

製品の状態	Liquid
保存方法	Shipped at 4°C. Upon delivery aliquot and store at -20°C or -80°C. Avoid repeated freeze / thaw cycles.
バッファー	pH: 7.00 Preservative: 0.025% Proclin 300 Constituents: 79% PBS, 20% Glycerol (glycerin, glycerine)
精製度	Immunogen affinity purified
ポリ/モノ	ポリクローナル
アイソタイプ	IgG

アプリケーション

The Abpromise guarantee

Abpromise保証は、次のテスト済みアプリケーションにおけるab96544の使用に適用されます
アプリケーションノートには、推奨の開始希釈率がありますが、適切な希釈率につきましてはご確認ください。

アプリケーション	Abreviews	特記事項
WB		1/500 - 1/3000. Predicted molecular weight: 107 kDa.
ICC/IF		1/100 - 1/200.

ターゲット情報

機能

May be implicated in HOX gene regulation.

関連疾患

A chromosomal aberration involving RBM15 may be a cause of acute megakaryoblastic leukemia. Translocation t(1;22)(p13;q13) with MKL1. Although both reciprocal fusion transcripts are detected in acute megakaryoblastic leukemia (AMKL, FAB-M7), the RBM15-MKL1 chimeric protein has all the putative functional domains encoded by each gene and is the candidate oncogene.

配列類似性

Belongs to the RRM Spen family.

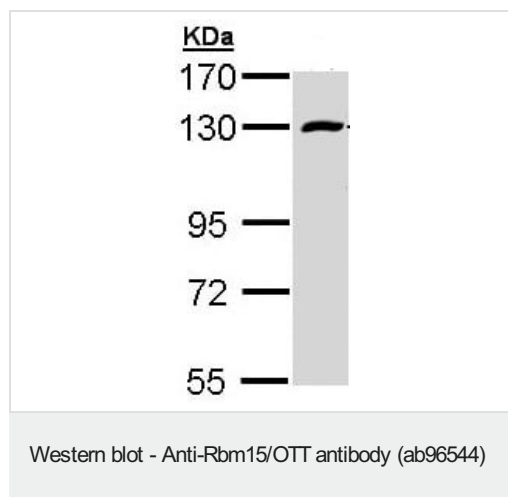
Contains 3 RRM (RNA recognition motif) domains.

Contains 1 SPOC domain.

細胞内局在

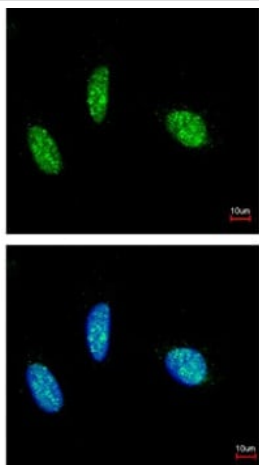
Nucleus.

画像



Anti-Rbm15/OTT antibody (ab96544) at 1/1000 dilution + A431 whole cell lysate at 30 µg

Predicted band size: 107 kDa



ab96544, at a 1/200 dilution, staining Rbm15/OTT in paraformaldehyde fixed HeLa cells by Immunofluorescence. Lower image is merged with DNA probe.

Immunocytochemistry/ Immunofluorescence - Anti-Rbm15/OTT antibody (ab96544)

Please note: All products are "FOR RESEARCH USE ONLY. NOT FOR USE IN DIAGNOSTIC PROCEDURES"

Our Abpromise to you: Quality guaranteed and expert technical support

- Replacement or refund for products not performing as stated on the datasheet
- Valid for 12 months from date of delivery
- Response to your inquiry within 24 hours
- We provide support in Chinese, English, French, German, Japanese and Spanish
- Extensive multi-media technical resources to help you
- We investigate all quality concerns to ensure our products perform to the highest standards

If the product does not perform as described on this datasheet, we will offer a refund or replacement. For full details of the Abpromise, please visit <https://www.abcam.co.jp/abpromise> or contact our technical team.

Terms and conditions

- Guarantee only valid for products bought direct from Abcam or one of our authorized distributors