


Anti-Rbm15/OTT antibody ab70549

5 References [画像数 2](#)

製品の概要

製品名	Anti-Rbm15/OTT antibody
製品の詳細	Rabbit polyclonal to Rbm15/OTT
由来種	Rabbit
アプリケーション	適用あり: WB, IP
種交差性	交差種: Human 交差が予測される動物種: Rabbit, Horse, Cow, Dog, Pig, Chimpanzee, Ferret, Rhesus monkey, Orangutan, Elephant 
免疫原	Synthetic peptide. This information is proprietary to Abcam and/or its suppliers.
特記事項	<p>The Life Science industry has been in the grips of a reproducibility crisis for a number of years. Abcam is leading the way in addressing this with our range of recombinant monoclonal antibodies and knockout edited cell lines for gold-standard validation. Please check that this product meets your needs before purchasing.</p> <p>If you have any questions, special requirements or concerns, please send us an inquiry and/or contact our Support team ahead of purchase. Recommended alternatives for this product can be found below, along with publications, customer reviews and Q&As</p>

製品の特性

製品の状態	Liquid
保存方法	Shipped at 4°C. Upon delivery aliquot and store at -20°C. Avoid freeze / thaw cycles.
バッファー	<p>pH: 7</p> <p>Preservative: 0.09% Sodium azide</p> <p>Constituents: 1.815% Tris, 1.764% Sodium citrate, 0.021% PBS</p>
精製度	Immunogen affinity purified
ポリ/モノ	ポリクローナル
アイソタイプ	IgG

アプリケーション

The Abpromise guarantee

Abpromise保証は、 次のテスト済みアプリケーションにおけるab70549の使用に適用されます

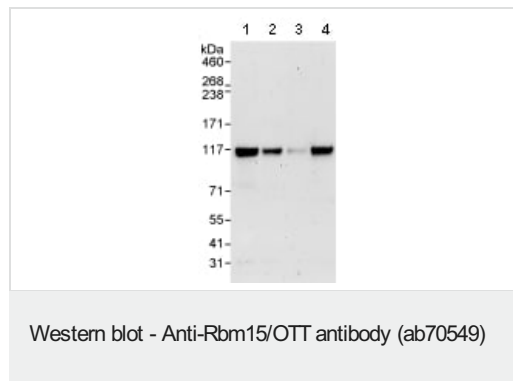
アプリケーションノートには、推奨の開始希釈率がありますが、適切な希釈率につきましてはご確認ください。

アプリケーション	Abreviews	特記事項
WB		1/2000 - 1/10000. Detects a band of approximately 107 kDa (predicted molecular weight: 107 kDa).
IP		Use at 2-5 µg/mg of lysate.

ターゲット情報

機能	May be implicated in HOX gene regulation.
関連疾患	A chromosomal aberration involving RBM15 may be a cause of acute megakaryoblastic leukemia. Translocation t(1;22)(p13;q13) with MKL1. Although both reciprocal fusion transcripts are detected in acute megakaryoblastic leukemia (AMKL, FAB-M7), the RBM15-MKL1 chimeric protein has all the putative functional domains encoded by each gene and is the candidate oncogene.
配列類似性	Belongs to the RRM Spen family. Contains 3 RRM (RNA recognition motif) domains. Contains 1 SPOC domain.
細胞内局在	Nucleus.

画像



All lanes : Anti-Rbm15/OTT antibody (ab70549) at 0.1 µg/ml

Lane 1 : HeLa whole cell lysate at 50 µg

Lane 2 : HeLa whole cell lysate at 15 µg

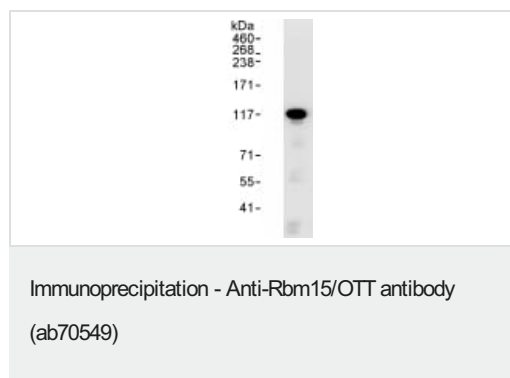
Lane 3 : HeLa whole cell lysate at 5 µg

Lane 4 : 293T whole cell lysate at 50 µg

Predicted band size: 107 kDa

Observed band size: 107 kDa

Exposure time: 3 minutes



Detection of Human Rbm15/OTT by Western Blot of Immunoprecipitate. ab70549 at 1µg/ml staining Rbm15/OTT in HeLa whole cell lysate immunoprecipitated by ab70549 at 3µg/mg lysate (1 mg/IP; 20% of IP loaded/lane).

Please note: All products are "FOR RESEARCH USE ONLY. NOT FOR USE IN DIAGNOSTIC PROCEDURES"

Our Abpromise to you: Quality guaranteed and expert technical support

- Replacement or refund for products not performing as stated on the datasheet
- Valid for 12 months from date of delivery
- Response to your inquiry within 24 hours
- We provide support in Chinese, English, French, German, Japanese and Spanish
- Extensive multi-media technical resources to help you
- We investigate all quality concerns to ensure our products perform to the highest standards

If the product does not perform as described on this datasheet, we will offer a refund or replacement. For full details of the Abpromise, please visit <https://www.abcam.co.jp/abpromise> or contact our technical team.

Terms and conditions

- Guarantee only valid for products bought direct from Abcam or one of our authorized distributors