

Anti-RASD2 antibody ab67277

★★★★★ [1 Abreviews](#) [画像数 1](#)

製品の概要

製品名	Anti-RASD2 antibody
製品の詳細	Rabbit polyclonal to RASD2
由来種	Rabbit
特異性	ab67277 may cross-react with the closely related protein RASD1.
アプリケーション	適用あり: WB
種交差性	交差種: Rat
免疫原	A 16 amino acid synthetic peptide from near the amino terminus of human RASD2.
ポジティブ・コントロール	WB: Rat colon tissue lysate.
特記事項	<p>The Life Science industry has been in the grips of a reproducibility crisis for a number of years. Abcam is leading the way in addressing this with our range of recombinant monoclonal antibodies and knockout edited cell lines for gold-standard validation. Please check that this product meets your needs before purchasing.</p> <p>If you have any questions, special requirements or concerns, please send us an inquiry and/or contact our Support team ahead of purchase. Recommended alternatives for this product can be found below, along with publications, customer reviews and Q&As</p>

製品の特性

製品の状態	Liquid
保存方法	Shipped at 4°C. Store at +4°C.
バッファー	pH: 7.2 Preservative: 0.02% Sodium azide Constituent: PBS
精製度	Immunogen affinity purified
ポリ/モノ	ポリクローナル
アイソタイプ	IgG

アプリケーション

The Abpromise guarantee

Abpromise保証は、 次のテスト済みアプリケーションにおけるab67277の使用に適用されます

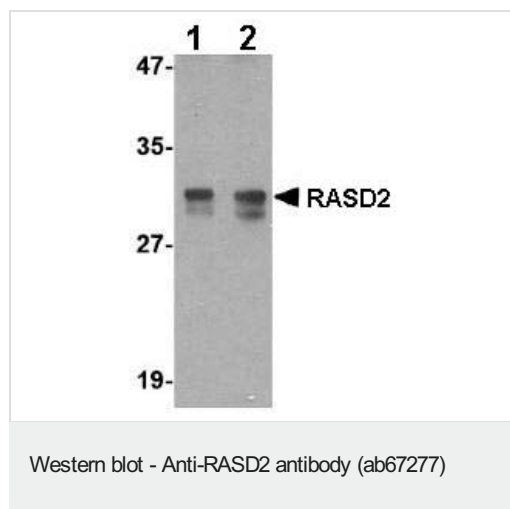
アプリケーションノートには、推奨の開始希釈率がありますが、適切な希釈率につきましてはご確認ください。

アプリケーション	Abreviews	特記事項
WB	★★★★★ (1)	Use a concentration of 1 - 2 µg/ml. Detects a band of approximately 30 kDa (predicted molecular weight: 30 kDa).

ターゲット情報

機能	GTPase signaling protein that binds to and hydrolyzes GTP. Regulates signaling pathways involving G-proteins-coupled receptor and heterotrimeric proteins such as GNB1, GNB2 and GNB3. May be involved in selected striatal competencies, mainly locomotor activity and motor coordination.
組織特異性	Pancreatic endocrine cells (islets of Langerhans).
配列類似性	Belongs to the small GTPase superfamily. RasD family.
翻訳後修飾	Farnesylated. Farnesylation is required for membrane targeting.
細胞内局在	Cell membrane.

画像



Lane 1 : Anti-RASD2 antibody (ab67277) at 1 µg/ml

Lane 2 : Anti-RASD2 antibody (ab67277) at 2 µg/ml

All lanes : Rat colon tissue lysate

Lysates/proteins at 15 µg per lane.

Predicted band size: 30 kDa

Observed band size: 30 kDa

Additional bands at: 29 kDa. We are unsure as to the identity of these extra bands.

Please note: All products are "FOR RESEARCH USE ONLY. NOT FOR USE IN DIAGNOSTIC PROCEDURES"

Our Abpromise to you: Quality guaranteed and expert technical support

- Replacement or refund for products not performing as stated on the datasheet
- Valid for 12 months from date of delivery
- Response to your inquiry within 24 hours
- We provide support in Chinese, English, French, German, Japanese and Spanish
- Extensive multi-media technical resources to help you

- We investigate all quality concerns to ensure our products perform to the highest standards

If the product does not perform as described on this datasheet, we will offer a refund or replacement. For full details of the Abpromise, please visit <https://www.abcam.co.jp/abpromise> or contact our technical team.

Terms and conditions

- Guarantee only valid for products bought direct from Abcam or one of our authorized distributors