

### Anti-RASA3 antibody ab153846

★★★★★ 2 Abreviews 両倍数 3

医薬用外劇物

#### 製品の概要

製品名	Anti-RASA3 antibody
製品の詳細	Rabbit polyclonal to RASA3
由来種	Rabbit
アプリケーション	適用あり: WB, IHC-P
種交差性	交差種: Human 交差が予測される動物種: Rat, Cow, Xenopus laevis 
免疫原	Recombinant fragment corresponding to Human RASA3 aa 583-834 (C terminal). Database link: <a href="#">Q14644</a>
特記事項	<p>The Life Science industry has been in the grips of a reproducibility crisis for a number of years. Abcam is leading the way in addressing this with our range of recombinant monoclonal antibodies and knockout edited cell lines for gold-standard validation. Please check that this product meets your needs before purchasing.</p> <p>If you have any questions, special requirements or concerns, please send us an inquiry and/or contact our Support team ahead of purchase. Recommended alternatives for this product can be found below, along with publications, customer reviews and Q&amp;As</p>

#### 製品の特性

製品の状態	Liquid
保存方法	Shipped at 4°C. Upon delivery aliquot. Store at -20°C or -80°C. Avoid freeze / thaw cycle.
バッファー	pH: 7.00 Preservative: 0.01% Thimerosal (merthiolate) Constituents: 1.21% Tris, 0.75% Glycine, 20% Glycerol (glycerin, glycerine)
精製度	Immunogen affinity purified
ポリ/モノ	ポリクローナル
アイソタイプ	IgG

#### アプリケーション

## The Abpromise guarantee

**Abpromise保証は、**次のテスト済みアプリケーションにおけるab153846の使用に適用されます

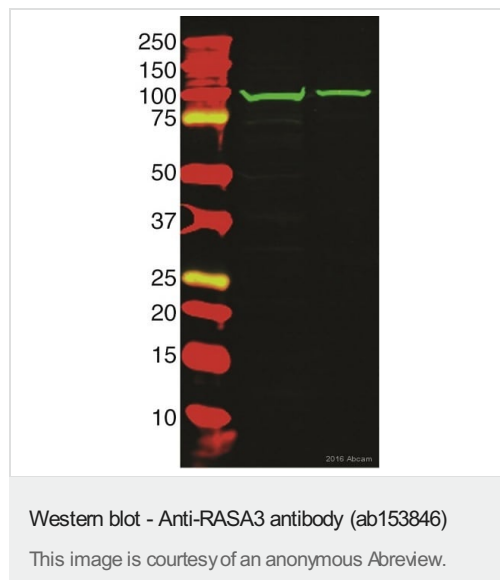
アプリケーションノートには、推奨の開始希釈率がありますが、適切な希釈率につきましてはご確認ください。

アプリケーション	Abreviews	特記事項
WB	★★★★★ (1)	1/500 - 1/3000. Detects a band of approximately 96 kDa.
IHC-P		1/100 - 1/1000. Perform heat mediated antigen retrieval with citrate buffer pH 6 before commencing with IHC staining protocol.

## ターゲット情報

機能	Inhibitory regulator of the Ras-cyclic AMP pathway. Binds inositol tetrakisphosphate (IP4) with high affinity. Might be a specific IP4 receptor.
配列類似性	Contains 1 Btk-type zinc finger. Contains 2 C2 domains. Contains 1 PH domain. Contains 1 Ras-GAP domain.
細胞内局在	Cell membrane.

## 画像



**All lanes :** Anti-RASA3 antibody (ab153846) at 1/400 dilution

**Lane 1 :** Mouse platelet whole cell lysate

**Lane 2 :** Human platelet whole cell lysate

Lysates/proteins at 20 µg per lane.

### Secondary

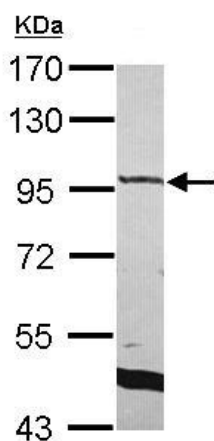
**All lanes :** IRDye 800CW - conjugated Odyssey goat IgG at 1/15000 dilution

Performed under reducing conditions.

**Additional bands at:** 98 kDa. We are unsure as to the identity of these extra bands.

**Exposure time:** 1 hour

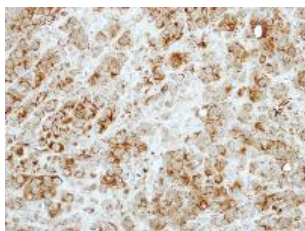
Blocking agent: 3% BSA for 60 minutes at 20°C.



Western blot - Anti-RASA3 antibody (ab153846)

Anti-RASA3 antibody (ab153846) at 1/2000 dilution + IMR32 whole cell lysate at 30 µg

7.5% SDS PAGE



Immunohistochemistry (Formalin/PFA-fixed paraffin-embedded sections) - Anti-RASA3 antibody (ab153846)

Immunohistochemical analysis of paraffin-embedded Human MCF7 xenograft tissue labeling RASA3 with ab153846 at 1/100 dilution.

**Please note:** All products are "FOR RESEARCH USE ONLY. NOT FOR USE IN DIAGNOSTIC PROCEDURES"

### Our Abpromise to you: Quality guaranteed and expert technical support

- Replacement or refund for products not performing as stated on the datasheet
- Valid for 12 months from date of delivery
- Response to your inquiry within 24 hours
- We provide support in Chinese, English, French, German, Japanese and Spanish
- Extensive multi-media technical resources to help you
- We investigate all quality concerns to ensure our products perform to the highest standards

If the product does not perform as described on this datasheet, we will offer a refund or replacement. For full details of the Abpromise, please visit <https://www.abcam.co.jp/abpromise> or contact our technical team.

### Terms and conditions

- Guarantee only valid for products bought direct from Abcam or one of our authorized distributors