

# Anti-RARRES1 antibody ab87115

画像数 1

### 製品の概要

製品名	Anti-RARRES1 antibody
製品の詳細	Rabbit polyclonal to RARRES1
由来種	Rabbit
アプリケーション	<b>適用あり:</b> WB
種交差性	<b>交差種:</b> Human
免疫原	Synthetic peptide corresponding to Human RARRES1 aa 50-150 conjugated to keyhole limpet haemocyanin. (Peptide available as <a href="#">ab87814</a> )
ポジティブ・コントロール	Recombinant Human RARRES1 protein ( <a href="#">ab114592</a> ) can be used as a positive control in WB. This antibody gave a positive signal in the following Whole cell lysates: HepG2; HEK293.
特記事項	<p>The Life Science industry has been in the grips of a reproducibility crisis for a number of years. Abcam is leading the way in addressing this with our range of recombinant monoclonal antibodies and knockout edited cell lines for gold-standard validation. Please check that this product meets your needs before purchasing.</p> <p>If you have any questions, special requirements or concerns, please send us an inquiry and/or contact our Support team ahead of purchase. Recommended alternatives for this product can be found below, along with publications, customer reviews and Q&amp;As</p>

### 製品の特性

製品の状態	Liquid
保存方法	Shipped at 4°C. Store at +4°C short term (1-2 weeks). Upon delivery aliquot. Store at -20°C or -80°C. Avoid freeze / thaw cycle.
バッファー	<p>pH: 7.40</p> <p>Preservative: 0.02% Sodium azide</p> <p>Constituent: PBS</p> <p>Batches of this product that have a concentration &lt; 1mg/ml may have BSA added as a stabilising agent. If you would like information about the formulation of a specific lot, please contact our scientific support team who will be happy to help.</p>
精製度	Immunogen affinity purified

ポリ/モノ	ポリクローナル
アイソタイプ	IgG

### アプリケーション

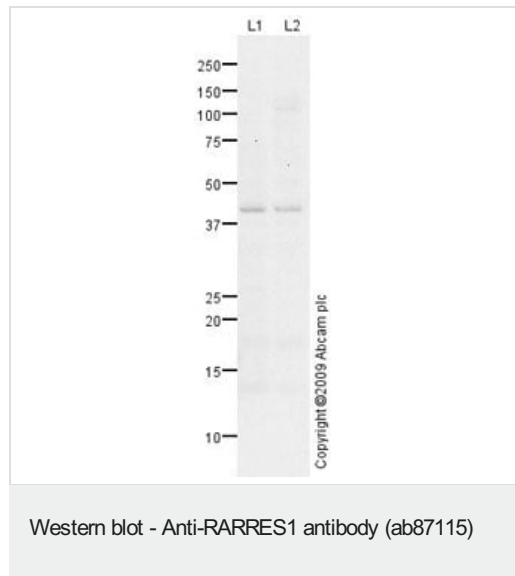
**The Abpromise guarantee**      **Abpromise保証は、**次のテスト済みアプリケーションにおけるab87115の使用に適用されます  
 アプリケーションノートには、推奨の開始希釈率がありますが、適切な希釈率につきましてはご検討ください。

アプリケーション	Abreviews	特記事項
WB		Use a concentration of 1 µg/ml. Detects a band of approximately 40 kDa (predicted molecular weight: 33 kDa).

### ターゲット情報

配列類似性	Belongs to the protease inhibitor I47 (latexin) family.
細胞内局在	Membrane.

### 画像



**All lanes** : Anti-RARRES1 antibody (ab87115) at 1 µg/ml

**Lane 1** : HepG2 (Human hepatocellular liver carcinoma cell line)  
Whole Cell Lysate

**Lane 2** : HEK293 (Human embryonic kidney cell line) Whole Cell  
Lysate

Lysates/proteins at 10 µg per lane.

**Secondary**  
**All lanes** : Goat polyclonal to Rabbit IgG - H&L - Pre-Adsorbed (HRP) at 1/3000 dilution

Developed using the ECL technique.

Performed under reducing conditions.

**Predicted band size:** 33 kDa  
**Observed band size:** 40 kDa

RARRES1 contains a number of potential glycosylation sites

(SwissProt) which may explain its migration at a higher molecular weight than predicted. Furthermore, the 40 kDa band observed is comparable to the molecular weight seen with other commercially available antibodies to RARRES1.

**Please note:** All products are "FOR RESEARCH USE ONLY. NOT FOR USE IN DIAGNOSTIC PROCEDURES"

#### **Our Abpromise to you: Quality guaranteed and expert technical support**

---

- Replacement or refund for products not performing as stated on the datasheet
- Valid for 12 months from date of delivery
- Response to your inquiry within 24 hours
- We provide support in Chinese, English, French, German, Japanese and Spanish
- Extensive multi-media technical resources to help you
- We investigate all quality concerns to ensure our products perform to the highest standards

If the product does not perform as described on this datasheet, we will offer a refund or replacement. For full details of the Abpromise, please visit <https://www.abcam.co.jp/abpromise> or contact our technical team.

#### **Terms and conditions**

---

- Guarantee only valid for products bought direct from Abcam or one of our authorized distributors