

Anti-Raptor antibody ab125351

画像数 1

製品の概要

製品名	Anti-Raptor antibody
製品の詳細	Rabbit polyclonal to Raptor
由来種	Rabbit
アプリケーション	適用あり: WB
種交差性	交差種: Human 交差が予測される動物種: Horse, Cow, Dog, Pig, Chimpanzee, Macaque monkey, Gorilla 
免疫原	Synthetic peptide corresponding to Human Raptor aa 500-600 conjugated to keyhole limpet haemocyanin. (Peptide available as ab155813)
ポジティブ・コントロール	This antibody gave a positive signal in the following human whole cell lysates: HepG2; HeLa; HEK293; PANC1; A431.
特記事項	<p>The Life Science industry has been in the grips of a reproducibility crisis for a number of years. Abcam is leading the way in addressing this with our range of recombinant monoclonal antibodies and knockout edited cell lines for gold-standard validation. Please check that this product meets your needs before purchasing.</p> <p>If you have any questions, special requirements or concerns, please send us an inquiry and/or contact our Support team ahead of purchase. Recommended alternatives for this product can be found below, along with publications, customer reviews and Q&As</p>

製品の特性

製品の状態	Liquid
保存方法	Shipped at 4°C. Store at +4°C short term (1-2 weeks). Upon delivery aliquot. Store at -20°C or -80°C. Avoid freeze / thaw cycle.
バッファー	pH: 7.40 Preservative: 0.02% Sodium azide Constituent: PBS
	Batches of this product that have a concentration < 1mg/ml may have BSA added as a stabilising agent. If you would like information about the formulation of a specific lot, please contact our scientific support team who will be happy to help.

精製度	Immunogen affinity purified
ポリ/モノ	ポリクローナル
アイソタイプ	IgG

アプリケーション

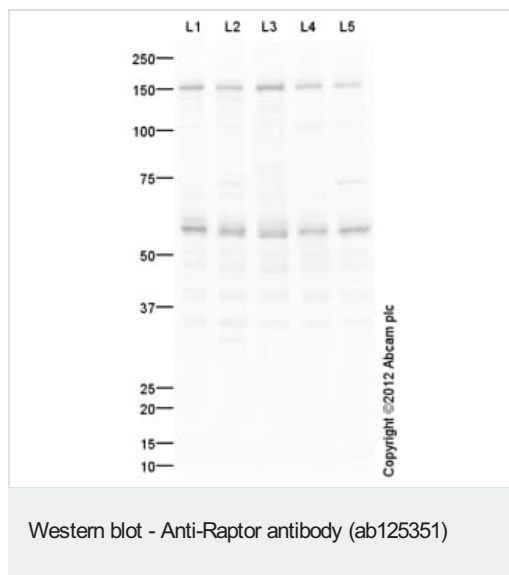
The Abpromise guarantee **Abpromise保証は、次のテスト済みアプリケーションにおけるab125351の使用に適用されます**
 アプリケーションノートには、推奨の開始希釈率がありますが、適切な希釈率につきましてはご検討ください。

アプリケーション	Abreviews	特記事項
WB		1/250. Detects a band of approximately 151 kDa (predicted molecular weight: 149 kDa).

ターゲット情報

機能	Involved in the control of the mammalian target of rapamycin complex 1 (mTORC1) activity which regulates cell growth and survival, and autophagy in response to nutrient and hormonal signals; functions as a scaffold for recruiting mTORC1 substrates. mTORC1 is activated in response to growth factors or amino-acids. Growth factor-stimulated mTORC1 activation involves a AKT1-mediated phosphorylation of TSC1-TSC2, which leads to the activation of the RHEB GTPase that potently activates the protein kinase activity of mTORC1. Amino-acid-signaling to mTORC1 requires its relocalization to the lysosomes mediated by the Ragulator complex and the Rag GTPases. Activated mTORC1 up-regulates protein synthesis by phosphorylating key regulators of mRNA translation and ribosome synthesis. mTORC1 phosphorylates EIF4EBP1 and releases it from inhibiting the elongation initiation factor 4E (eIF4E). mTORC1 phosphorylates and activates S6K1 at 'Thr-389', which then promotes protein synthesis by phosphorylating PDCD4 and targeting it for degradation.
組織特異性	Highly expressed in skeletal muscle, and in a lesser extent in brain, lung, small intestine, kidney and placenta.
配列類似性	Belongs to the WD repeat RAPTOR family. Contains 7 WD repeats.
細胞内局在	Cytoplasm. Lysosome. Targeting to lysosomes depends on amino acid availability.

画像



All lanes : Anti-Raptor antibody (ab125351) at 1/250 dilution

Lane 1 : HepG2 (Human hepatocellular liver carcinoma cell line) Whole Cell Lysate

Lane 2 : HeLa (Human epithelial carcinoma cell line) Whole Cell Lysate

Lane 3 : HEK293 (Human embryonic kidney cell line) Whole Cell Lysate

Lane 4 : PANC-1 (Human Pancreatic Carcinoma) Whole Cell Lysate

Lane 5 : A431 (Human epithelial carcinoma cell line) Whole Cell Lysate

Lysates/proteins at 10 µg per lane.

Secondary

All lanes : Goat Anti-Rabbit IgG H&L (HRP) (**ab97051**) at 1/10000 dilution

Developed using the ECL technique.

Performed under reducing conditions.

Predicted band size: 149 kDa

Observed band size: 151 kDa

Additional bands at: 60 kDa, 72 kDa. We are unsure as to the identity of these extra bands.

Exposure time: 3 minutes

This blot was produced using a 4-12% Bis-tris gel under the MOPS buffer system. The gel was run at 200V for 50 minutes before being transferred onto a Nitrocellulose membrane at 30V for 70 minutes. The membrane was then blocked for an hour using 5% Bovine

Serum Albumin before being incubated with ab125351 overnight at 4°C. Antibody binding was detected using an anti-rabbit antibody conjugated to HRP, and visualised using ECL development solution.

Please note: All products are "FOR RESEARCH USE ONLY. NOT FOR USE IN DIAGNOSTIC PROCEDURES"

Our Abpromise to you: Quality guaranteed and expert technical support

- Replacement or refund for products not performing as stated on the datasheet
- Valid for 12 months from date of delivery
- Response to your inquiry within 24 hours
- We provide support in Chinese, English, French, German, Japanese and Spanish
- Extensive multi-media technical resources to help you
- We investigate all quality concerns to ensure our products perform to the highest standards

If the product does not perform as described on this datasheet, we will offer a refund or replacement. For full details of the Abpromise, please visit <https://www.abcam.co.jp/abpromise> or contact our technical team.

Terms and conditions

- Guarantee only valid for products bought direct from Abcam or one of our authorized distributors