

Anti-RAPH1 antibody ab121619

1 [References](#) **2** [画像数](#)

製品の概要

製品名	Anti-RAPH1 antibody
製品の詳細	Rabbit polyclonal to RAPH1
由来種	Rabbit
アプリケーション	適用あり: ICC/IF, IHC-P
種交差性	交差種: Human
免疫原	Recombinant fragment corresponding to Human RAPH1 aa 1100 to the C-terminus (C terminal). Database link: Q70E73-10
ポジティブ・コントロール	Human duodenum tissue.
特記事項	<p>The Life Science industry has been in the grips of a reproducibility crisis for a number of years. Abcam is leading the way in addressing this with our range of recombinant monoclonal antibodies and knockout edited cell lines for gold-standard validation. Please check that this product meets your needs before purchasing.</p> <p>If you have any questions, special requirements or concerns, please send us an inquiry and/or contact our Support team ahead of purchase. Recommended alternatives for this product can be found below, along with publications, customer reviews and Q&As</p>

製品の特性

製品の状態	Liquid
保存方法	Shipped at 4°C. Upon delivery aliquot and store at -20°C. Avoid repeated freeze / thaw cycles.
バッファー	pH: 7.20 Preservative: 0.02% Sodium azide Constituents: 40% Glycerol (glycerin, glycerine), 59% PBS
精製度	Immunogen affinity purified
ポリ/モノ	ポリクローナル
アイソタイプ	IgG

アプリケーション

The Abpromise guarantee

Abpromise保証は、 次のテスト済みアプリケーションにおけるab121619の使用に適用されます

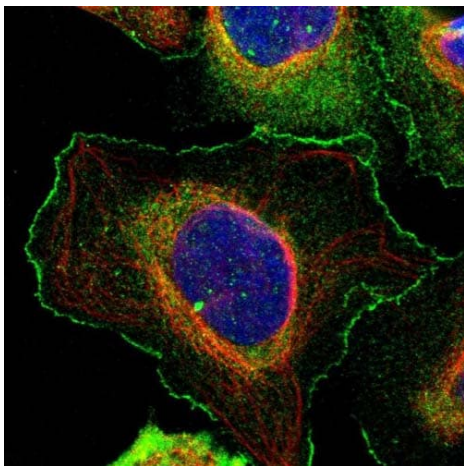
アプリケーションノートには、推奨の開始希釈率がありますが、適切な希釈率につきましてはご確認ください。

アプリケーション	Abreviews	特記事項
ICC/IF		Use a concentration of 1 - 4 µg/ml. Recommend PFA Fixation and Triton X-100 treatment
IHC-P		1/50 - 1/200. Perform heat mediated antigen retrieval with citrate buffer pH 6 before commencing with IHC staining protocol. pH 6

ターゲット情報

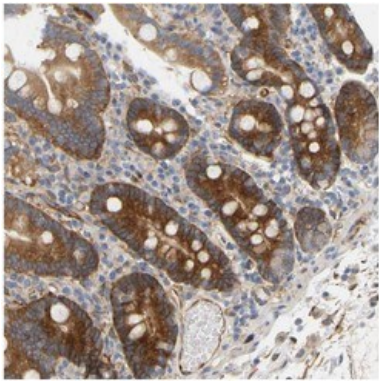
機能	Mediator of localized membrane signals. Implicated in the regulation of lamellipodial dynamics. Negatively regulates cell adhesion.
組織特異性	Isoform RMO1-RAPH1 is ubiquitously expressed with highest levels in brain, heart, ovary and developing embryo. Isoform RMO1 is widely expressed with highest levels in liver. Low expression in B-cells.
配列類似性	Belongs to the MRL family. Contains 1 PH domain. Contains 1 Ras-associating domain.
細胞内局在	Cell membrane. Cell projection > lamellipodium. Cell projection > filopodium. Cytoplasm > cytoskeleton. Recruited to the membrane, via the PH domain, by the phosphoinositide, PI(3,4)P2. Colocalizes with ENAH/VASP at the tips of lamellipodia and filopodia. Also colocalizes with the pathogens, Vaccinia and Enteropathogenic E.coli (EPEC) at the interface between the pathogen and their actin.

画像



Immunocytochemistry/ Immunofluorescence - Anti-RAPH1 antibody (ab121619)

Immunofluorescent staining of Human cell line U-2 OS shows positivity in nucleus, plasma membrane and cytoplasm. Recommended concentration of ab121619 1-4 µg/ml. Cells treated with PFA/Triton X-100.



ab121619 at 1/75 staining RALPH1 in Paraffin Embedded Human duodenum tissue. Note strong cytoplasmic positivity in glandular cells.

Immunohistochemistry (Formalin/PFA-fixed paraffin-embedded sections) - Anti-RAPH1 antibody (ab121619)

Please note: All products are "FOR RESEARCH USE ONLY. NOT FOR USE IN DIAGNOSTIC PROCEDURES"

Our Abpromise to you: Quality guaranteed and expert technical support

- Replacement or refund for products not performing as stated on the datasheet
- Valid for 12 months from date of delivery
- Response to your inquiry within 24 hours
- We provide support in Chinese, English, French, German, Japanese and Spanish
- Extensive multi-media technical resources to help you
- We investigate all quality concerns to ensure our products perform to the highest standards

If the product does not perform as described on this datasheet, we will offer a refund or replacement. For full details of the Abpromise, please visit <https://www.abcam.co.jp/abpromise> or contact our technical team.

Terms and conditions

- Guarantee only valid for products bought direct from Abcam or one of our authorized distributors