

Anti-RAP1/TERF2IP antibody [4c8/1] ab14404

★★★★★ [4 Abreviews](#) [6 References](#) [画像数 3](#)

製品の概要

製品名	Anti-RAP1/TERF2IP antibody [4c8/1]
製品の詳細	Mouse monoclonal [4c8/1] to RAP1/TERF2IP
由来種	Mouse
アプリケーション	適用あり: IP, WB, Flow Cyt
種交差性	交差種: Human
免疫原	Recombinant full length protein corresponding to Human RAP1/TERF2IP.
ポジティブ・コントロール	In Western Blot, this antibody gave a positive signal in the following whole cell lysates: HeLa; HEK293; HepG2; A431.
特記事項	<p>The Life Science industry has been in the grips of a reproducibility crisis for a number of years. Abcam is leading the way in addressing this with our range of recombinant monoclonal antibodies and knockout edited cell lines for gold-standard validation. Please check that this product meets your needs before purchasing.</p> <p>If you have any questions, special requirements or concerns, please send us an inquiry and/or contact our Support team ahead of purchase. Recommended alternatives for this product can be found below, along with publications, customer reviews and Q&As</p>

製品の特性

製品の状態	Liquid
保存方法	Shipped at 4°C. Store at +4°C short term (1-2 weeks). Upon delivery aliquot. Store at -20°C or -80°C. Avoid freeze / thaw cycle.
バッファー	Preservative: 0.02% Sodium azide Constituent: 99.98% PBS
精製度	Protein A purified
ポリ/モノ	モノクローナル
クローン名	4c8/1
ミエローマ	Sp2/0-Ag14
アイソタイプ	IgG2b

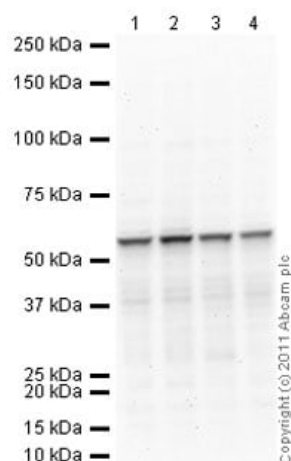
The Abpromise guarantee **Abpromise保証は、** 次のテスト済みアプリケーションにおけるab14404の使用に適用されます
 アプリケーションノートには、推奨の開始希釈率がありますが、適切な希釈率につきましてはご検討ください。

アプリケーション	Abreviews	特記事項
IP		Use a concentration of 5 µg/ml.
WB	★★★★★ (2)	Use at an assay dependent concentration. Predicted molecular weight: 36 kDa.
Flow Cyt		Use 1µg for 10 ⁶ cells. ab91366 - Mouse monoclonal IgG2b, is suitable for use as an isotype control with this antibody. ab170192 - Mouse monoclonal IgG2b, is suitable for use as an isotype control with this antibody.

ターゲット情報

機能	<p>Acts both as a regulator of telomere function and as a transcription regulator. Involved in the regulation of telomere length and protection as a component of the shelterin complex (telosome). In contrast to other components of the shelterin complex, it is dispensible for telomere capping and does not participate in the protection of telomeres against non-homologous end-joining (NHEJ)-mediated repair. Instead, it is required to negatively regulate telomere recombination and is essential for repressing homology-directed repair (HDR), which can affect telomere length. Does not bind DNA directly: recruited to telomeric double-stranded 5'-TTAGGG-3' repeats via its interaction with TERF2. Independently of its function in telomeres, also acts as a transcription regulator: recruited to extratelomeric 5'-TTAGGG-3' sites via its association with TERF2 or other factors, and regulates gene expression. When cytoplasmic, associates with the I-kappa-B-kinase (IKK) complex and acts as a regulator of the NF-kappa-B signaling by promoting IKK-mediated phosphorylation of RELA/p65, leading to activate expression of NF-kappa-B target genes.</p>
組織特異性	Ubiquitous. Highly expressed.
配列類似性	<p>Belongs to the RAP1 family.</p> <p>Contains 1 BRCT domain.</p> <p>Contains 1 Myb-like domain.</p>
翻訳後修飾	Phosphorylated upon DNA damage, probably by ATM or ATR.
細胞内局在	Nucleus. Cytoplasm. Chromosome. Chromosome > telomere. Associates with chromosomes, both at telomeres and in extratelomeric sites. Also exists as a cytoplasmic form, where it associates with the IKK complex.

画像



Western blot - Anti-RAP1/TERF2IP antibody [4c8/1] (ab14404)

All lanes : Anti-RAP1/TERF2IP antibody [4c8/1] (ab14404) at 5 µg/ml

Lane 1 : HeLa (Human epithelial carcinoma cell line) Whole Cell Lysate

Lane 2 : HEK293 (Human embryonic kidney cell line) Whole Cell Lysate

Lane 3 : HepG2 (Human hepatocellular liver carcinoma cell line) Whole Cell Lysate

Lane 4 : A431 (Human epithelial carcinoma cell line) Whole Cell Lysate

Lysates/proteins at 20 µg per lane.

Secondary

All lanes : Goat polyclonal Secondary Antibody to Mouse IgG - H&L (HRP), pre-adsorbed at 1/5000 dilution

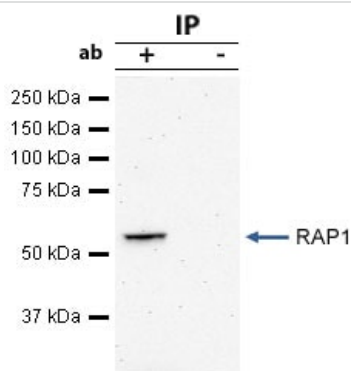
Developed using the ECL technique.

Performed under reducing conditions.

Predicted band size: 36 kDa

Observed band size: 55 kDa

Exposure time: 8 minutes



Immunoprecipitation - Anti-RAP1/TERF2IP antibody [4c8/1] (ab14404)

RAP1 was immunoprecipitated using 0.5mg HeLa whole cell extract, 5µg of Mouse monoclonal to RAP1/TERF2IP RITM0035008 and 50µl of protein G magnetic beads (+). No antibody was added to the control (-).

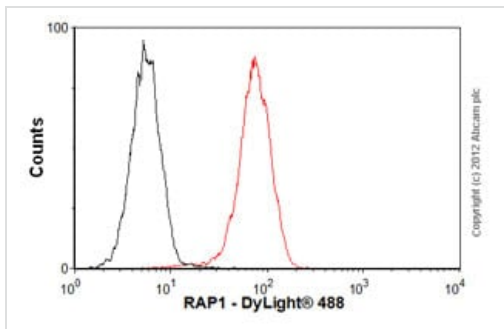
The antibody was incubated under agitation with Protein G beads for 10min, HeLa whole cell extract lysate diluted in RIPA buffer was added to each sample and incubated for a further 10min under agitation.

Proteins were eluted by addition of 40µl SDS loading buffer and incubated for 10min at 70°C; 10µl of each sample was separated on a SDS PAGE gel, transferred to a nitrocellulose membrane, blocked with 5% BSA and probed with ab14404.

Secondary: Goat polyclonal to mouse IgG light chain specific (HRP)

at 1/5000 dilution.

Band: 55kDa; RAP1



Flow Cytometry - Anti-RAP1/TERF2IP antibody
[4c8/1] (ab14404)

Overlay histogram showing HeLa cells stained with ab14404 (red line). The cells were fixed with 80% methanol (5 min) and then permeabilized with 0.1% PBS-Tween for 20 min. The cells were then incubated in 1x PBS / 10% normal goat serum / 0.3M glycine to block non-specific protein-protein interactions followed by the antibody (ab14404, 1µg/1x10⁶ cells) for 30 min at 22°C. The secondary antibody used was DyLight® 488 goat anti-mouse IgG (H+L) ([ab96879](#)) at 1/500 dilution for 30 min at 22°C. Isotype control antibody (black line) was mouse IgG2b [PLPV219] ([ab91366](#), 2µg/1x10⁶ cells) used under the same conditions. Acquisition of >5,000 events was performed.

Please note: All products are "FOR RESEARCH USE ONLY. NOT FOR USE IN DIAGNOSTIC PROCEDURES"

Our Abpromise to you: Quality guaranteed and expert technical support

- Replacement or refund for products not performing as stated on the datasheet
- Valid for 12 months from date of delivery
- Response to your inquiry within 24 hours
- We provide support in Chinese, English, French, German, Japanese and Spanish
- Extensive multi-media technical resources to help you
- We investigate all quality concerns to ensure our products perform to the highest standards

If the product does not perform as described on this datasheet, we will offer a refund or replacement. For full details of the Abpromise, please visit <https://www.abcam.co.jp/abpromise> or contact our technical team.

Terms and conditions

- Guarantee only valid for products bought direct from Abcam or one of our authorized distributors