

Anti-RAP1GDS1 antibody ab67722

画像数 3

製品の概要

製品名	Anti-RAP1GDS1 antibody
製品の詳細	Mouse polyclonal to RAP1GDS1
由来種	Mouse
アプリケーション	適用あり: WB, ICC/IF
種交差性	交差種: Human
免疫原	Recombinant full length protein within Human RAP1GDS1. The exact immunogen sequence used to generate this antibody is proprietary information. If additional detail on the immunogen is needed to determine the suitability of the antibody for your needs, please contact our Scientific Support team to discuss your requirements.
ポジティブ・コントロール	Liver. HeLa cells.
特記事項	<p>The Life Science industry has been in the grips of a reproducibility crisis for a number of years. Abcam is leading the way in addressing this with our range of recombinant monoclonal antibodies and knockout edited cell lines for gold-standard validation. Please check that this product meets your needs before purchasing.</p> <p>If you have any questions, special requirements or concerns, please send us an inquiry and/or contact our Support team ahead of purchase. Recommended alternatives for this product can be found below, along with publications, customer reviews and Q&As</p>

製品の特性

製品の状態	Liquid
保存方法	Shipped at 4°C. Upon delivery aliquot and store at -20°C or -80°C. Avoid repeated freeze / thaw cycles.
バッファー	pH: 7.40 Constituent: 100% PBS
精製度	Protein A purified
ポリ/モノ	ポリクローナル
アイソタイプ	IgG

アプリケーション

The Abpromise guarantee

Abpromise保証は、次のテスト済みアプリケーションにおけるab67722の使用に適用されます

アプリケーションノートには、推奨の開始希釈率がありますが、適切な希釈率につきましてはご検討ください。

アプリケーション	Abreviews	特記事項
WB		
ICC/IF		

追加情報

ICC/IF: Use at a concentration of 10 µg/ml. Note: the product requires protein A purification prior to use for ICC/IF.

WB: 1/500 - 1/1000. Detects a band of approximately 66 kDa (predicted molecular weight: 66 kDa).

Not yet tested in other applications.

Optimal dilutions/concentrations should be determined by the end user.

ターゲット情報

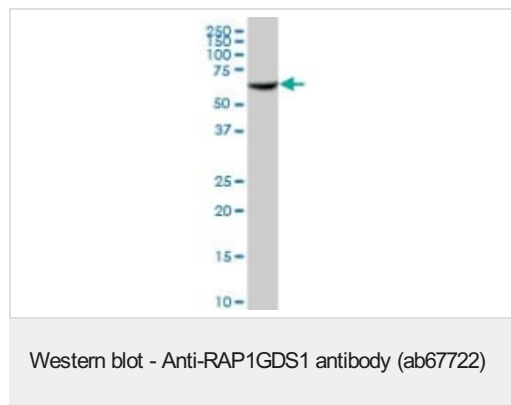
機能

Stimulates GDP/GTP exchange reaction of a group of small GTP-binding proteins (G proteins) including Rap1a/Rap1b, RhoA, RhoB and KRas, by stimulating the dissociation of GDP from and the subsequent binding of GTP to each small G protein.

配列類似性

Contains 5 ARM repeats.

画像



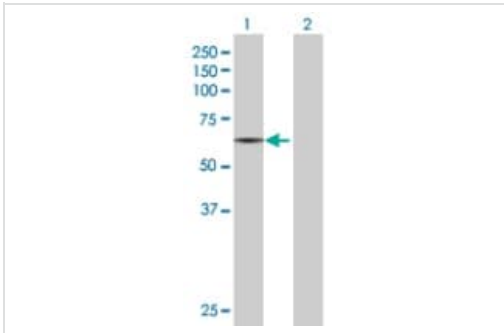
Anti-RAP1GDS1 antibody (ab67722) at 1/500 dilution + human liver lysate at 25 µg

Secondary

Goat anti-mouse IgG (H&L)-HRP conjugated at 1/2500 dilution

Predicted band size: 66 kDa

Observed band size: 66 kDa



Western blot - Anti-RAP1GDS1 antibody (ab67722)

All lanes : Anti-RAP1GDS1 antibody (ab67722) at 1/500 dilution

Lane 1 : RAP1GDS1 transfected lysate

Lane 2 : Non-transfected lysate

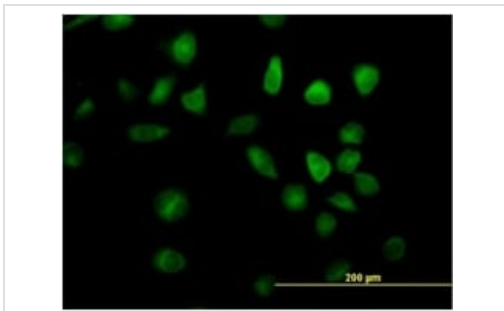
Lysates/proteins at 25 µg per lane.

Secondary

All lanes : Goat anti-mouse IgG (H&L)-HRP conjugated at 1/2500 dilution

Predicted band size: 66 kDa

Observed band size: 66 kDa



Immunocytochemistry/ Immunofluorescence - Anti-RAP1GDS1 antibody (ab67722)

Immunofluorescence analysis of RAP1GDS1 expression on HeLa cell using purified ab67722 at 10 µg/ml.

Please note: All products are "FOR RESEARCH USE ONLY. NOT FOR USE IN DIAGNOSTIC PROCEDURES"

Our Abpromise to you: Quality guaranteed and expert technical support

- Replacement or refund for products not performing as stated on the datasheet
- Valid for 12 months from date of delivery
- Response to your inquiry within 24 hours
- We provide support in Chinese, English, French, German, Japanese and Spanish
- Extensive multi-media technical resources to help you
- We investigate all quality concerns to ensure our products perform to the highest standards

If the product does not perform as described on this datasheet, we will offer a refund or replacement. For full details of the Abpromise, please visit <https://www.abcam.co.jp/abpromise> or contact our technical team.

Terms and conditions

- Guarantee only valid for products bought direct from Abcam or one of our authorized distributors