


Anti-RAP1A + RAP1B antibody [EPR14815(B)] ab181858

リコンビナント **RabMAb**

1 References [画像数 4](#)

製品の概要

製品名	Anti-RAP1A + RAP1B antibody [EPR14815(B)]
製品の詳細	Rabbit monoclonal [EPR14815(B)] to RAP1A + RAP1B
由来種	Rabbit
アプリケーション	適用あり: Flow Cyt (Intra), IP, WB
種交差性	交差種: Human 交差が予測される動物種: Mouse, Rat 
免疫原	Synthetic peptide. This information is proprietary to Abcam and/or its suppliers.
ポジティブ・コントロール	HeLa, A431, 293 and MOLT4 cell lysates; HeLa cells.
特記事項	<p>This product is a recombinant monoclonal antibody, which offers several advantages including:</p> <ul style="list-style-type: none"> - High batch-to-batch consistency and reproducibility - Improved sensitivity and specificity - Long-term security of supply - Animal-free production <p>For more information see here.</p> <p>Our RabMAb[®] technology is a patented hybridoma-based technology for making rabbit monoclonal antibodies. For details on our patents, please refer to RabMAb[®] patents.</p>

製品の特性

製品の状態	Liquid
保存方法	Shipped at 4°C. Store at +4°C short term (1-2 weeks). Upon delivery aliquot. Store at -20°C long term. Avoid freeze / thaw cycle.
バッファー	Preservative: 0.01% Sodium azide Constituents: 59% PBS, 40% Glycerol (glycerin, glycerine), 0.05% BSA
精製度	Tissue culture supernatant
ポリ/モノ	モノクローナル
クローン名	EPR14815(B)
アイソタイプ	IgG

アプリケーション

The Abpromise guarantee Abpromise保証は、次のテスト済みアプリケーションにおけるab181858の使用に適用されます
アプリケーションノートには、推奨の開始希釈率がありますが、適切な希釈率につきましてはご確認ください。

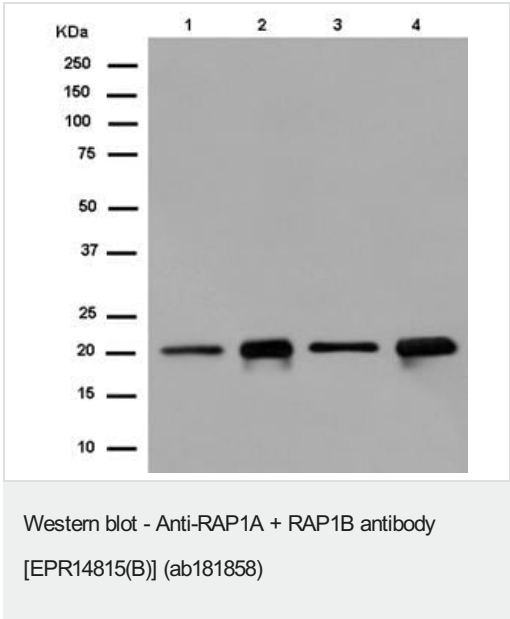
アプリケーション	Abreviews	特記事項
Flow Cyt (Intra)		1/30. ab172730 - Rabbit monoclonal IgG, is suitable for use as an isotype control with this antibody.
IP		1/50.
WB		1/10000 - 1/50000. Detects a band of approximately 21 kDa (predicted molecular weight: 21 kDa).

ターゲット情報

関連性 RAP1A and RAP1B belong to a family of RAS-related proteins. These proteins share approximately 50% amino acid identity with the classical RAS proteins and have numerous structural features in common. The most striking difference between the RAP and RAS proteins resides in their 61st amino acid: glutamine in RAS is replaced by threonine in RAP proteins. Human RAP1B is 95% identical to RAP1A. RAP1A and B are proposed to regulate Ras-mediated signalling and may also be involved in the regulation of integrin-mediated cell adhesion, although the mechanism of regulation is not known.

細胞内局在 Cell Membrane; Attached to the membrane by a lipid anchor

画像



All lanes : Anti-RAP1A + RAP1B antibody [EPR14815(B)] (ab181858) at 1/50000 dilution

Lane 1 : HeLa cell lysate
Lane 2 : A431 cell lysate
Lane 3 : 293 cell lysate
Lane 4 : MOLT4 cell lysate

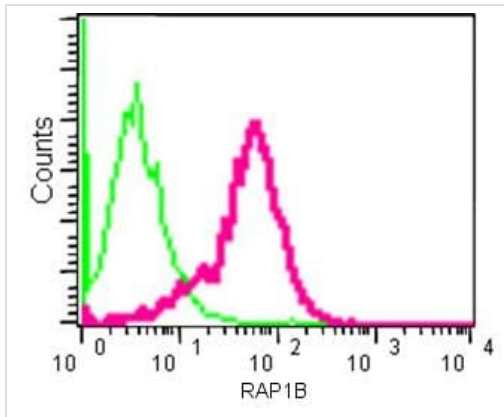
Lysates/proteins at 20 µg per lane.

Secondary
All lanes : goat anti-rabbit IgG, (H+L), peroxidase conjugated at 1/1000 dilution

Developed using the ECL technique.

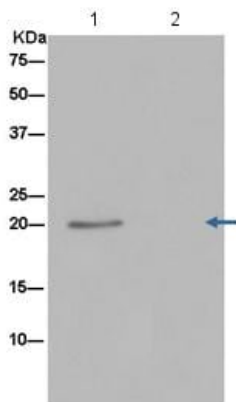
Predicted band size: 21 kDa

Observed band size: 21 kDa



Flow Cytometry (Intracellular) - Anti-RAP1A +
RAP1B antibody [EPR14815(B)] (ab181858)

Intracellular Flow Cytometry analysis of paraformaldehyde-fixed HeLa cells labeling RAP1B with ab181858 at a 1/30 dilution and secondary antibody goat anti-rabbit IgG (FITC, red) at a 1/150 dilution, or negative control rabbit IgG (green).



Immunoprecipitation - Anti-RAP1A + RAP1B
antibody [EPR14815(B)] (ab181858)

Western blot analysis on immunoprecipitation from 1) 293 cell lysate or 2) negative control, labeling RAP1B using ab181858 at 1/50 dilution and HRP-conjugated anti-rabbit IgG preferentially detecting the non-reduced form of rabbit IgG at a 1/1500 dilution.

Why choose a recombinant antibody?



Research with confidence
Consistent and reproducible results



Long-term and scalable supply
Recombinant technology



Success from the first experiment
Confirmed specificity



Ethical standards compliant
Animal-free production

Anti-RAP1A + RAP1B antibody [EPR14815(B)]
(ab181858)

Please note: All products are "FOR RESEARCH USE ONLY. NOT FOR USE IN DIAGNOSTIC PROCEDURES"

Our Abpromise to you: Quality guaranteed and expert technical support

- Replacement or refund for products not performing as stated on the datasheet
- Valid for 12 months from date of delivery
- Response to your inquiry within 24 hours
- We provide support in Chinese, English, French, German, Japanese and Spanish
- Extensive multi-media technical resources to help you
- We investigate all quality concerns to ensure our products perform to the highest standards

If the product does not perform as described on this datasheet, we will offer a refund or replacement. For full details of the Abpromise, please visit <https://www.abcam.co.jp/abpromise> or contact our technical team.

Terms and conditions

- Guarantee only valid for products bought direct from Abcam or one of our authorized distributors