

### Anti-RANKL antibody ab9957

★★★★☆ [4 Abreviews](#) [62 References](#) [画像数 2](#)

#### 製品の概要

製品名	Anti-RANKL antibody
製品の詳細	Rabbit polyclonal to RANKL
由来種	Rabbit
アプリケーション	<b>適用あり:</b> Sandwich ELISA, ICC/IF, IHC-P, WB, ELISA
種交差性	<b>交差種:</b> Human, Recombinant fragment
免疫原	Recombinant full length protein corresponding to Human RANKL aa 100-350. Database link: <a href="#">O14788</a>

 [Run BLAST with](#)

 [Run BLAST with](#)

#### 特記事項

Although some customers have been successful in IHC we no longer batch test in this application.

We have received both positive and negative customer feedback on mouse reactivity for this antibody. Therefore, we do not guarantee this species.

The Life Science industry has been in the grips of a reproducibility crisis for a number of years. Abcam is leading the way in addressing this with our range of recombinant monoclonal antibodies and knockout edited cell lines for gold-standard validation. Please check that this product meets your needs before purchasing.

If you have any questions, special requirements or concerns, please send us an inquiry and/or contact our Support team ahead of purchase. Recommended alternatives for this product can be found below, along with publications, customer reviews and Q&As

#### 製品の特性

製品の状態	Lyophilized:Reconstitute with 200µl of sterile water. Please note that if you receive this product in liquid form it has already been reconstituted as described and no further reconstitution is necessary.
保存方法	Shipped at 4°C. Store at +4°C short term (1-2 weeks). Upon delivery aliquot. Store at -20°C long term.
バッファー	No preservative, sterile filtered
精製度	Immunogen affinity purified
ポリ/モノ	ポリクローナル
アイソタイプ	IgG

## アプリケーション

**The Abpromise guarantee** Abpromise保証は、次のテスト済みアプリケーションにおけるab9957の使用に適用されます  
アプリケーションノートには、推奨の開始希釈率がありますが、適切な希釈率につきましてはご検討ください。

アプリケーション	Abreviews	特記事項
<b>Sandwich ELISA</b>		Use at an assay dependent concentration. To detect hsRANKL by sandwich ELISA (using 100 µl/well antibody solution) a concentration of 0.5 - 2.0 µg/ml of this antibody is required. This antigen affinity purified antibody, in conjunction with <b>ab83145</b> as a detection antibody, allows the detection of at least 0.2 - 0.4 ng/well of recombinant hsRANKL.
<b>ICC/IF</b>	★★★★★ (1)	Use at an assay dependent concentration.
<b>IHC-P</b>	★★★★★ (1)	Use at an assay dependent concentration.
<b>WB</b>	★★★★★ (1)	Use a concentration of 1 µg/ml. Detects a band of approximately 37 kDa (predicted molecular weight: 35 kDa). To detect hsRANK-L by Western Blot analysis this antibody can be used at a concentration of 0.1 - 0.2 µg/ml. Used in conjunction with compatible secondary reagents the detection limit for recombinant hsRANK-L is 1.5 - 3.0 ng/lane, under either reducing or non-reducing conditions.
<b>ELISA</b>	★★★★★ (1)	Use at an assay dependent concentration. To detect hsRANK-L by direct ELISA (using 100µl/well antibody solution) a concentration of at least 0.5µg/ml of this antibody is required. This antigen affinity purified antibody, in conjunction with compatible secondary reagents, allows the detection of 0.2 - 0.4 ng/well of recombinant hsRANK-L.

## ターゲット情報

<b>機能</b>	Cytokine that binds to TNFRSF11B/OPG and to TNFRSF11A/RANK. Osteoclast differentiation and activation factor. Augments the ability of dendritic cells to stimulate naive T-cell proliferation. May be an important regulator of interactions between T-cells and dendritic cells and may play a role in the regulation of the T-cell-dependent immune response. May also play an important role in enhanced bone-resorption in humoral hypercalcemia of malignancy.
<b>組織特異性</b>	Highest in the peripheral lymph nodes, weak in spleen, peripheral blood Leukocytes, bone marrow, heart, placenta, skeletal muscle, stomach and thyroid.
<b>関連疾患</b>	Defects in TNFSF11 are the cause of osteopetrosis autosomal recessive type 2 (OPTB2) [MIM:259710]; also known as osteoclast-poor osteopetrosis. Osteopetrosis is a rare genetic disease characterized by abnormally dense bone, due to defective resorption of immature bone. The disorder occurs in two forms: a severe autosomal recessive form occurring in utero, infancy, or childhood, and a benign autosomal dominant form occurring in adolescence or adulthood. Autosomal recessive osteopetrosis is usually associated with normal or elevated amount of non-functional osteoclasts. OPTB2 is characterized by paucity of osteoclasts, suggesting a molecular defect in osteoclast development.
<b>配列類似性</b>	Belongs to the tumor necrosis factor family.

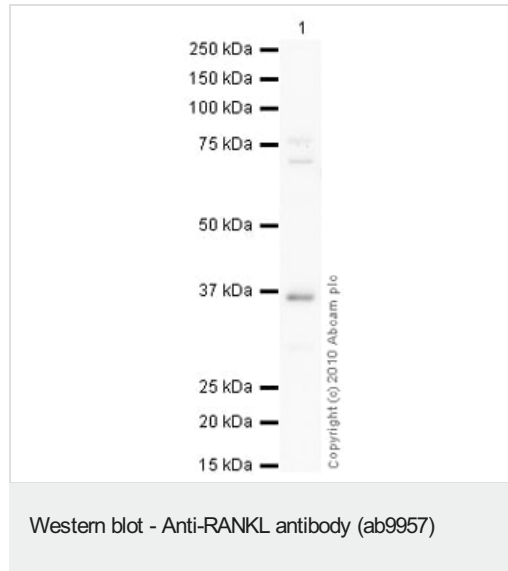
## 翻訳後修飾

The soluble form of isoform 1 derives from the membrane form by proteolytic processing (By similarity). The cleavage may be catalyzed by ADAM17.

## 細胞内局在

Cytoplasm; Secreted and Cell membrane.

## 画像



Anti-RANKL antibody (ab9957) at 1 µg/ml + Human spleen tissue lysate - total protein ([ab29699](#)) at 10 µg

### Secondary

Goat polyclonal Secondary Antibody to Rabbit IgG - H&L (HRP), pre-adsorbed at 1/3000 dilution

Developed using the ECL technique.

Performed under reducing conditions.

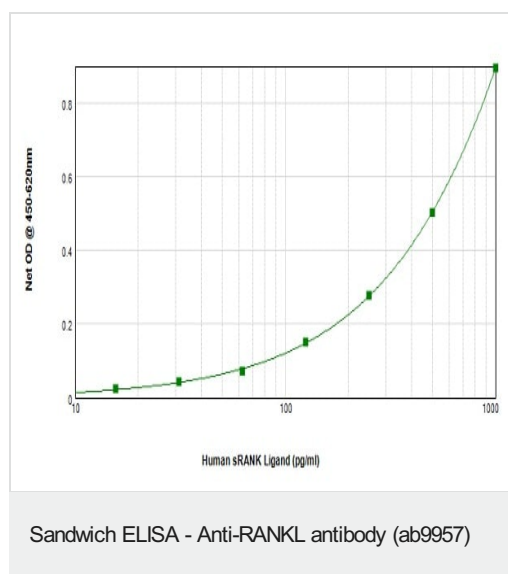
**Predicted band size:** 35 kDa

**Observed band size:** 37 kDa

**Additional bands at:** 72 kDa, 76 kDa. We are unsure as to the identity of these extra bands.

**Exposure time:** 90 seconds

RANKL contains a number of potential glycosylation sites (SwissProt) which may explain its migration at a higher molecular weight than predicted.



To detect human sRANKL by sandwich ELISA (using 100 µl/well antibody solution) a concentration of 0.25 – 1.0 µg/ml of [ab83145](#) is required. This biotinylated polyclonal antibody, in conjunction with an anti-human sRANKL (ab9957) as a capture antibody, allows the detection of at least 0.2 – 0.4 ng/well of recombinant human sRANKL.

**Please note:** All products are "FOR RESEARCH USE ONLY. NOT FOR USE IN DIAGNOSTIC PROCEDURES"

### **Our Abpromise to you: Quality guaranteed and expert technical support**

---

- Replacement or refund for products not performing as stated on the datasheet
- Valid for 12 months from date of delivery
- Response to your inquiry within 24 hours
  
- We provide support in Chinese, English, French, German, Japanese and Spanish
- Extensive multi-media technical resources to help you
- We investigate all quality concerns to ensure our products perform to the highest standards

If the product does not perform as described on this datasheet, we will offer a refund or replacement. For full details of the Abpromise, please visit <https://www.abcam.co.jp/abpromise> or contact our technical team.

### **Terms and conditions**

---

- Guarantee only valid for products bought direct from Abcam or one of our authorized distributors