

Anti-RanBP2 antibody ab112061

2 References [画像数 2](#)

製品の概要

製品名	Anti-RanBP2 antibody
製品の詳細	Rabbit polyclonal to RanBP2
由来種	Rabbit
アプリケーション	適用あり: WB, IP
種交差性	交差種: Human
免疫原	Synthetic peptide, corresponding to a region within amino acids 1050-1100 of Human RanBP2 (NP_006258.3).
ポジティブ・コントロール	HeLa Whole cell lysate.
特記事項	<p>The Life Science industry has been in the grips of a reproducibility crisis for a number of years. Abcam is leading the way in addressing this with our range of recombinant monoclonal antibodies and knockout edited cell lines for gold-standard validation. Please check that this product meets your needs before purchasing.</p> <p>If you have any questions, special requirements or concerns, please send us an inquiry and/or contact our Support team ahead of purchase. Recommended alternatives for this product can be found below, along with publications, customer reviews and Q&As</p>

製品の特性

製品の状態	Liquid
保存方法	Shipped at 4°C. Upon delivery aliquot and store at -20°C. Avoid freeze / thaw cycles.
バッファー	Preservative: 0.09% Sodium azide Constituents: 99% Tris buffered saline, 0.1% BSA
精製度	Immunogen affinity purified
特記事項 (精製)	ab112061 was affinity purified using an epitope specific to RanBP2 immobilized on solid support.
ポリモノ	ポリクローナル
アイソタイプ	IgG

アプリケーション

The Abpromise guarantee

Abpromise保証は、次のテスト済みアプリケーションにおけるab112061の使用に適用されます

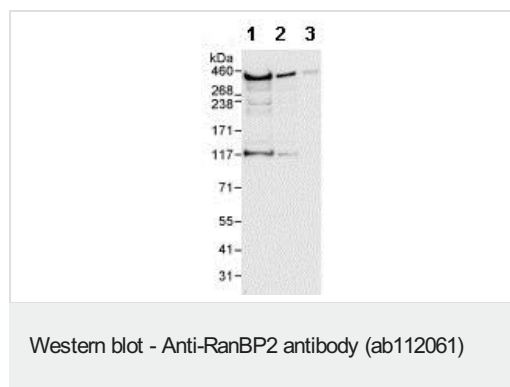
アプリケーションノートには、推奨の開始希釈率がありますが、適切な希釈率につきましてはご確認ください。

アプリケーション	Abreviews	特記事項
WB		1/2000 - 1/10000. Predicted molecular weight: 358 kDa.
IP		Use at 2-5 µg/mg of lysate.

ターゲット情報

機能	E3 SUMO-protein ligase which facilitates SUMO1 and SUMO2 conjugation by UBE2I. Involved in transport factor (Ran-GTP, karyopherin)-mediated protein import via the F-G repeat-containing domain which acts as a docking site for substrates. Could also have isomerase or chaperone activity and may bind RNA or DNA. Component of the nuclear export pathway. Specific docking site for the nuclear export factor exportin-1.
パスウェイ	Protein modification; protein sumoylation.
関連疾患	Defects in RANBP2 are the cause of susceptibility to encephalopathy acute necrotizing type 1 (ANE1) [MIM:608033]. A rapidly progressive encephalopathy manifesting in susceptible individuals with seizures and coma. It can occur within days in otherwise healthy children after common viral infections such as influenza and parainfluenza, without evidence of viral infection of the brain or inflammatory cell infiltration. Brain T2-weighted magnetic resonance imaging reveals characteristic symmetric lesions present in the thalami, pons and brainstem.
配列類似性	Contains 1 PPlase cyclophilin-type domain. Contains 4 RanBD1 domains. Contains 8 RanBP2-type zinc fingers. Contains 1 TPR repeat.
ドメイン	Contains F-X-F-G repeats.
翻訳後修飾	Polyubiquitinated by PARK2, which leads to proteasomal degradation.
細胞内局在	Nucleus > nuclear pore complex. Cytoplasmic filaments.

画像



All lanes : Anti-RanBP2 antibody (ab112061) at 0.04 µg/ml

Lane 1 : Hela whole cell lysate at 50 µg

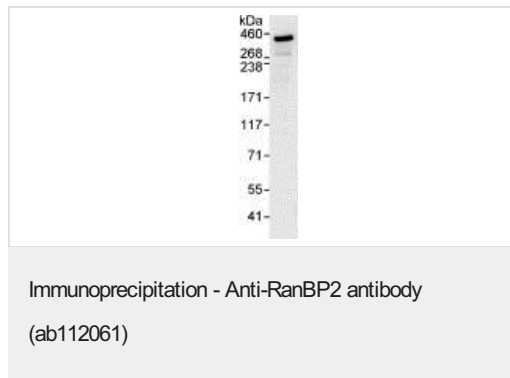
Lane 2 : Hela whole cell lysate at 15 µg

Lane 3 : Hela whole cell lysate at 5 µg

Developed using the ECL technique.

Predicted band size: 358 kDa

Exposure time: 10 seconds



Detection of RanBP2 by Western Blot of Immunoprecipitate.
ab112061 at 0.1µg/ml staining RanBP2 in HeLa whole cell lysate immunoprecipitated using ab112061 at 3µg/mg lysate (1 mg/IP; 20% of IP loaded/lane).
Detection: Chemiluminescence with exposure time of 3 seconds.

Please note: All products are "FOR RESEARCH USE ONLY. NOT FOR USE IN DIAGNOSTIC PROCEDURES"

Our Abpromise to you: Quality guaranteed and expert technical support

- Replacement or refund for products not performing as stated on the datasheet
- Valid for 12 months from date of delivery
- Response to your inquiry within 24 hours
- We provide support in Chinese, English, French, German, Japanese and Spanish
- Extensive multi-media technical resources to help you
- We investigate all quality concerns to ensure our products perform to the highest standards

If the product does not perform as described on this datasheet, we will offer a refund or replacement. For full details of the Abpromise, please visit <https://www.abcam.co.jp/abpromise> or contact our technical team.

Terms and conditions

- Guarantee only valid for products bought direct from Abcam or one of our authorized distributors