


Anti-RanBP1 antibody ab70185

画像数 2

製品の概要

製品名	Anti-RanBP1 antibody
製品の詳細	Rabbit polyclonal to RanBP1
由来種	Rabbit
アプリケーション	適用あり: WB, IP
種交差性	交差種: Human 交差が予測される動物種: Chimpanzee, Rhesus monkey, Gorilla, Orangutan 
免疫原	Synthetic peptide corresponding a region between residues 1 and 50 of human RanBP1 (NP_002873.1)
ポジティブ・コントロール	HeLa whole cell lysates.
特記事項	<p>The Life Science industry has been in the grips of a reproducibility crisis for a number of years. Abcam is leading the way in addressing this with our range of recombinant monoclonal antibodies and knockout edited cell lines for gold-standard validation. Please check that this product meets your needs before purchasing.</p> <p>If you have any questions, special requirements or concerns, please send us an inquiry and/or contact our Support team ahead of purchase. Recommended alternatives for this product can be found below, along with publications, customer reviews and Q&As</p>

製品の特性

製品の状態	Liquid
保存方法	Shipped at 4°C. Upon delivery aliquot and store at -20°C. Avoid freeze / thaw cycles.
バッファー	pH: 7 Preservative: 0.09% Sodium azide Constituents: 1.815% Tris, 1.764% Sodium citrate, 0.021% PBS
精製度	Immunogen affinity purified
特記事項(精製)	ab70185 was affinity purified using an epitope specific to RanBP1 immobilized on solid support.
ポリモノ	ポリクローナル
アイソタイプ	IgG

The Abpromise guarantee **Abpromise保証は、** 次のテスト済みアプリケーションにおけるab70185の使用に適用されます
アプリケーションノートには、推奨の開始希釈率がありますが、適切な希釈率につきましてはご検討ください。

アプリケーション	Abreviews	特記事項
WB		
IP		

追加情報

IP: Use at 2-5µg/mg of lysate.
WB: 1/1000 - 1/5000. Detects a band of approximately 28 kDa (predicted molecular weight: 23 kDa).

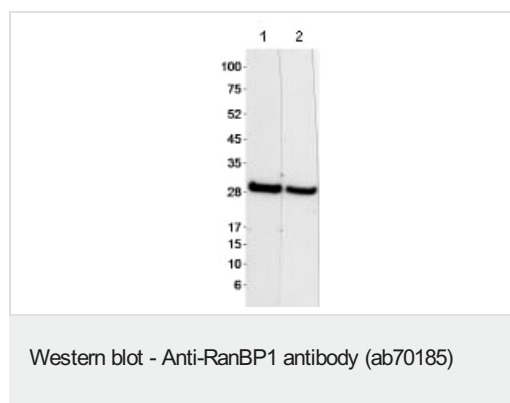
Not yet tested in other applications.
Optimal dilutions/concentrations should be determined by the end user.

ターゲット情報

機能 Inhibits GTP exchange on Ran. Forms a Ran-GTP-RANBP1 trimeric complex. Increase GTP hydrolysis induced by the Ran GTPase activating protein RANGAP1. May act in an intracellular signaling pathway which may control the progression through the cell cycle by regulating the transport of protein and nucleic acids across the nuclear membrane.

配列類似性 Belongs to the RANBP1 family.
Contains 1 RanBD1 domain.

画像



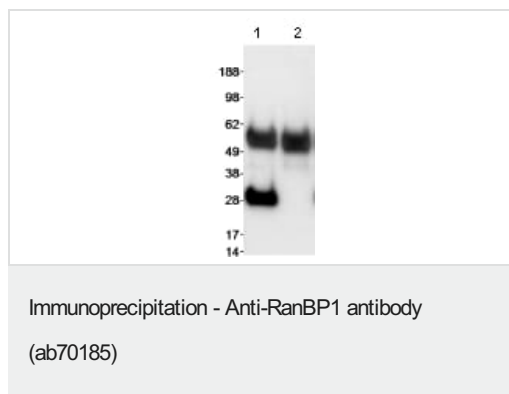
Lane 1 : Anti-RanBP1 antibody (ab70185) at 1 µg/ml
Lane 2 : Anti-RanBP1 antibody (ab70185) at 0.33 µg/ml

All lanes : HeLa whole cell lysate

Lysates/proteins at 50 µg per lane.

Predicted band size: 23 kDa
Observed band size: 28 kDa

Exposure time: 5 minutes



Western Blot showing ab70185 at 1 µg/ml staining RanBP1 in HeLa whole cell lysates immunoprecipitated using ab70185 at 5 µg/0.5mg lysate (Lane 1). Lane 2: Control IgG was used for immunoprecipitation. Detection: Chemiluminescence with an exposure time of 5 minutes

Please note: All products are "FOR RESEARCH USE ONLY. NOT FOR USE IN DIAGNOSTIC PROCEDURES"

Our Abpromise to you: Quality guaranteed and expert technical support

- Replacement or refund for products not performing as stated on the datasheet
- Valid for 12 months from date of delivery
- Response to your inquiry within 24 hours
- We provide support in Chinese, English, French, German, Japanese and Spanish
- Extensive multi-media technical resources to help you
- We investigate all quality concerns to ensure our products perform to the highest standards

If the product does not perform as described on this datasheet, we will offer a refund or replacement. For full details of the Abpromise, please visit <https://www.abcam.co.jp/abpromise> or contact our technical team.

Terms and conditions

- Guarantee only valid for products bought direct from Abcam or one of our authorized distributors