

Anti-RALY antibody ab88616

画像数 3

製品の概要

製品名	Anti-RALY antibody
製品の詳細	Mouse polyclonal to RALY
由来種	Mouse
アプリケーション	適用あり: WB, ICC/IF
種交差性	交差種: Human
免疫原	Recombinant full length human RALY (AAI03754.1).
ポジティブ・コントロール	HepG2 whole cell lysate (ab7900); RALY transfected 293T cell lysate and HeLa cells.
特記事項	<p>The Life Science industry has been in the grips of a reproducibility crisis for a number of years. Abcam is leading the way in addressing this with our range of recombinant monoclonal antibodies and knockout edited cell lines for gold-standard validation. Please check that this product meets your needs before purchasing.</p> <p>If you have any questions, special requirements or concerns, please send us an inquiry and/or contact our Support team ahead of purchase. Recommended alternatives for this product can be found below, along with publications, customer reviews and Q&As</p>

製品の特性

製品の状態	Liquid
保存方法	Shipped at 4°C. Upon delivery aliquot and store at -20°C or -80°C. Avoid repeated freeze / thaw cycles.
バッファー	pH: 7.40 Constituent: 100% PBS
精製度	Protein A purified
ポリ/モノ	ポリクローナル
アイソタイプ	IgG

アプリケーション

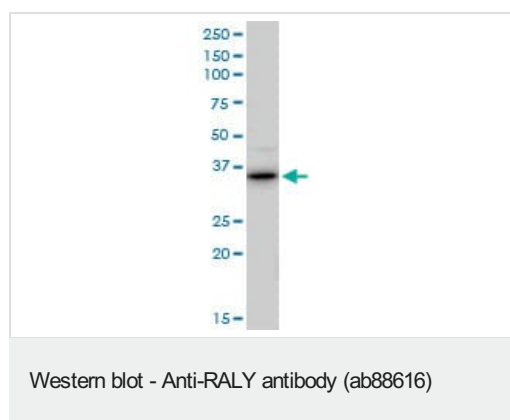
The Abpromise guarantee **Abpromise保証は、次のテスト済みアプリケーションにおけるab88616の使用に適用されます**
アプリケーションノートには、推奨の開始希釈率がありますが、適切な希釈率につきましてはご検討ください。

アプリケーション	Abreviews	特記事項
WB		Use a concentration of 1 µg/ml. Predicted molecular weight: 32 kDa.
ICC/IF		Use a concentration of 10 µg/ml.

ターゲット情報

機能	Probable-RNA binding protein. Could be a heterogeneous nuclear ribonucleoprotein (hnRNP). May be involved in pre-mRNA splicing.
組織特異性	Expressed in heart, brain, lung, liver, skeletal muscle, kidney and pancreas. Weakly expressed in placenta.
配列類似性	Belongs to the RRM HNRPC family. RALY subfamily. Contains 1 RRM (RNA recognition motif) domain.
翻訳後修飾	Phosphorylated upon DNA damage, probably by ATM or ATR.
細胞内局在	Nucleus.

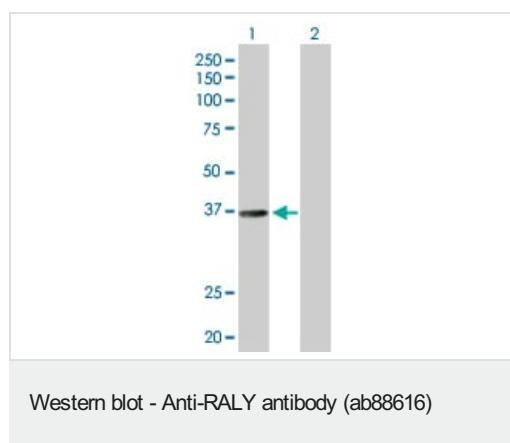
画像



Anti-RALY antibody (ab88616) at 1 µg/ml + HepG2 cell lysate at 50 µg

Predicted band size: 32 kDa

Observed band size: 32 kDa



All lanes : Anti-RALY antibody (ab88616) at 1 µg/ml

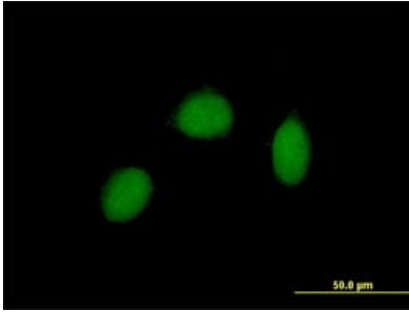
Lane 1 : RALY transfected 293T cell lysate

Lane 2 : Non-transfected lysate

Lysates/proteins at 25 µg per lane.

Predicted band size: 32 kDa

Observed band size: 36 kDa



ab88616 at 10 μ g/ml staining RALY in HeLa cells by Immunofluorescence.

Immunocytochemistry/ Immunofluorescence - Anti-RALY antibody (ab88616)

Please note: All products are "FOR RESEARCH USE ONLY. NOT FOR USE IN DIAGNOSTIC PROCEDURES"

Our Abpromise to you: Quality guaranteed and expert technical support

- Replacement or refund for products not performing as stated on the datasheet
- Valid for 12 months from date of delivery
- Response to your inquiry within 24 hours
- We provide support in Chinese, English, French, German, Japanese and Spanish
- Extensive multi-media technical resources to help you
- We investigate all quality concerns to ensure our products perform to the highest standards

If the product does not perform as described on this datasheet, we will offer a refund or replacement. For full details of the Abpromise, please visit <https://www.abcam.co.jp/abpromise> or contact our technical team.

Terms and conditions

- Guarantee only valid for products bought direct from Abcam or one of our authorized distributors