

Anti-RAGE antibody ab65965

4 References [画像数 2](#)

医薬用外毒物

医薬用外劇物

製品の概要

製品名	Anti-RAGE antibody
製品の詳細	Rabbit polyclonal to RAGE
由来種	Rabbit
アプリケーション	適用あり: WB, IHC-P
種交差性	交差種: Rat
免疫原	A synthetic peptide corresponding to a sequence mapping in the middle region of human advanced glycosylation end-product-specific receptor(RAGE), different from the mouse and rat sequence by two amino acids.
ポジティブ・コントロール	Rat lung tissue and lysate
特記事項	<p>The Life Science industry has been in the grips of a reproducibility crisis for a number of years. Abcam is leading the way in addressing this with our range of recombinant monoclonal antibodies and knockout edited cell lines for gold-standard validation. Please check that this product meets your needs before purchasing.</p> <p>If you have any questions, special requirements or concerns, please send us an inquiry and/or contact our Support team ahead of purchase. Recommended alternatives for this product can be found below, along with publications, customer reviews and Q&As</p>

製品の特性

製品の状態	Lyophilized:0.2ml of distilled water will yield a concentration of 500µg/ml.
保存方法	Shipped at 4°C. Upon delivery aliquot and store at -20°C or -80°C. Avoid repeated freeze / thaw cycles.
バッファー	Preservatives: 0.025% Thimerosal (merthiolate), 0.025% Sodium azide Constituents: 0.1% Dibasic monohydrogen sodium phosphate, 0.45% Sodium chloride, 2.5% BSA
精製度	Immunogen affinity purified
ポリ/モノ	ポリクローナル
アイソタイプ	IgG

アプリケーション

The Abpromise guarantee **Abpromise保証は、次のテスト済みアプリケーションにおけるab65965の使用に適用されます**
アプリケーションノートには、推奨の開始希釈率がありますが、適切な希釈率につきましてはご確認ください。

アプリケーション	Abreviews	特記事項
WB		
IHC-P		

追加情報

ICC: Use at a concentration of 0.5 - 1 µg/ml.
IHC-P: Use at a concentration of 0.5 - 1 µg/ml.
WB: Use at a concentration of 1 - 2 µg/ml. Detects a band of approximately 48 kDa (predicted molecular weight: 48 kDa).

Not yet tested in other applications.
Optimal dilutions/concentrations should be determined by the end user.

ターゲット情報

機能

Mediates interactions of advanced glycosylation end products (AGE). These are nonenzymatically glycosylated proteins which accumulate in vascular tissue in aging and at an accelerated rate in diabetes. Acts as a mediator of both acute and chronic vascular inflammation in conditions such as atherosclerosis and in particular as a complication of diabetes. AGE/RAGE signaling plays an important role in regulating the production/expression of TNF-alpha, oxidative stress, and endothelial dysfunction in type 2 diabetes. Interaction with S100A12 on endothelium, mononuclear phagocytes, and lymphocytes triggers cellular activation, with generation of key proinflammatory mediators. Interaction with S100B after myocardial infarction may play a role in myocyte apoptosis by activating ERK1/2 and p53/TP53 signaling (By similarity). Receptor for amyloid beta peptide. Contributes to the translocation of amyloid-beta peptide (ABPP) across the cell membrane from the extracellular to the intracellular space in cortical neurons. ABPP-initiated RAGE signaling, especially stimulation of p38 mitogen-activated protein kinase (MAPK), has the capacity to drive a transport system delivering ABPP as a complex with RAGE to the intraneuronal space.

組織特異性

Endothelial cells.

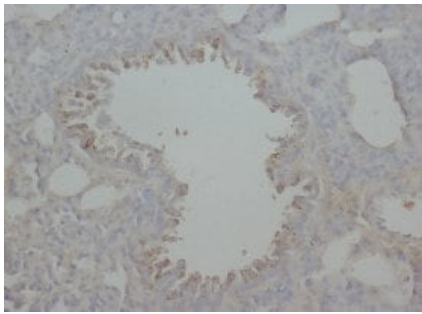
配列類似性

Contains 2 Ig-like C2-type (immunoglobulin-like) domains.
Contains 1 Ig-like V-type (immunoglobulin-like) domain.

細胞内局在

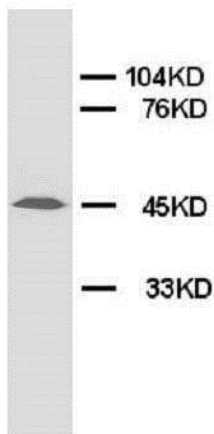
Secreted and Cell membrane.

画像



Immunohistochemical analysis of paraffin-embedded Rat lung tissue sections using ab65965 at 1 µg/ml

Immunohistochemistry (Formalin/PFA-fixed paraffin-embedded sections) - Anti-RAGE antibody (ab65965)



Anti-RAGE antibody (ab65965) at 2 µg/ml + Rat lung tissue lysate

Predicted band size: 48 kDa
Observed band size: 48 kDa

Western blot - Anti-RAGE antibody (ab65965)

Please note: All products are "FOR RESEARCH USE ONLY. NOT FOR USE IN DIAGNOSTIC PROCEDURES"

Our Abpromise to you: Quality guaranteed and expert technical support

- Replacement or refund for products not performing as stated on the datasheet
- Valid for 12 months from date of delivery
- Response to your inquiry within 24 hours
- We provide support in Chinese, English, French, German, Japanese and Spanish
- Extensive multi-media technical resources to help you
- We investigate all quality concerns to ensure our products perform to the highest standards

If the product does not perform as described on this datasheet, we will offer a refund or replacement. For full details of the Abpromise, please visit <https://www.abcam.co.jp/abpromise> or contact our technical team.

Terms and conditions

- Guarantee only valid for products bought direct from Abcam or one of our authorized distributors