



# Anti-RAGE antibody ab37647

★★★★☆ **12 Abreviews**   **70 References**   画像数 6

### 製品の概要

製品名	Anti-RAGE antibody
製品の詳細	Rabbit polyclonal to RAGE
由来種	Rabbit
アプリケーション	<b>適用あり:</b> ICC/IF, WB, Flow Cyt
種交差性	<b>交差種:</b> Mouse, Rat, Cow, Human
免疫原	Synthetic peptide: KGAPKKPPQRLEWKLNTGRTC , corresponding to amino acids 39-58 of Human RAGE  <a href="#">Run BLAST with</a>  <a href="#">Run BLAST with</a>

### 特記事項

The Life Science industry has been in the grips of a reproducibility crisis for a number of years. Abcam is leading the way in addressing this with our range of recombinant monoclonal antibodies and knockout edited cell lines for gold-standard validation. Please check that this product meets your needs before purchasing.

If you have any questions, special requirements or concerns, please send us an inquiry and/or contact our Support team ahead of purchase. Recommended alternatives for this product can be found below, along with publications, customer reviews and Q&As

### 製品の特性

製品の状態	Liquid
保存方法	Shipped at 4°C. Upon delivery aliquot and store at -20°C. Avoid repeated freeze / thaw cycles.
バッファー	Preservative: 0.1% Sodium azide Constituents: 50% Glycerol, PBS
精製度	Immunogen affinity purified
ポリ/モノ	ポリクローナル
アイソタイプ	IgG

### アプリケーション

The Abpromise guarantee

**Abpromise保証は、** 次のテスト済みアプリケーションにおけるab37647の使用に適用されます

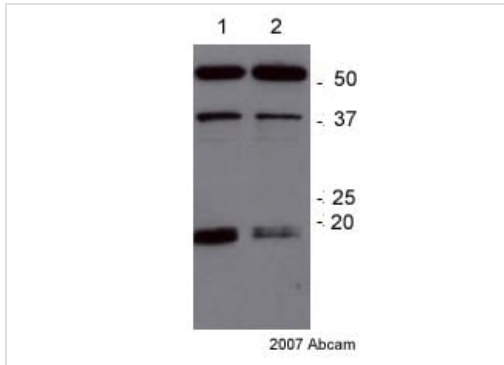
アプリケーションノートには、推奨の開始希釈率がありますが、適切な希釈率につきましてはご確認ください。

アプリケーション	Abreviews	特記事項
ICC/IF	★★★★★ (4)	Use a concentration of 1 µg/ml.
WB	★★★★★ (6)	1/1000 - 1/5000. Detects a band of approximately 42 kDa (predicted molecular weight: 42 kDa).
Flow Cyt	★★★★★ (1)	Use 1µg for 10 <sup>6</sup> cells. Use PBS/EDTA to detach cells to preserve the glycoproteins on the cell surface; do not fix, do not permeabilise.

## ターゲット情報

機能	Mediates interactions of advanced glycosylation end products (AGE). These are nonenzymatically glycosylated proteins which accumulate in vascular tissue in aging and at an accelerated rate in diabetes. Acts as a mediator of both acute and chronic vascular inflammation in conditions such as atherosclerosis and in particular as a complication of diabetes. AGE/RAGE signaling plays an important role in regulating the production/expression of TNF-alpha, oxidative stress, and endothelial dysfunction in type 2 diabetes. Interaction with S100A12 on endothelium, mononuclear phagocytes, and lymphocytes triggers cellular activation, with generation of key proinflammatory mediators. Interaction with S100B after myocardial infarction may play a role in myocyte apoptosis by activating ERK1/2 and p53/TP53 signaling (By similarity). Receptor for amyloid beta peptide. Contributes to the translocation of amyloid-beta peptide (ABPP) across the cell membrane from the extracellular to the intracellular space in cortical neurons. ABPP-initiated RAGE signaling, especially stimulation of p38 mitogen-activated protein kinase (MAPK), has the capacity to drive a transport system delivering ABPP as a complex with RAGE to the intraneuronal space.
組織特異性	Endothelial cells.
配列類似性	Contains 2 Ig-like C2-type (immunoglobulin-like) domains. Contains 1 Ig-like V-type (immunoglobulin-like) domain.
細胞内局在	Secreted and Cell membrane.

## 画像



Western blot - Anti-RAGE antibody (ab37647)

This image is courtesy of an anonymous Abreview

**All lanes :** Anti-RAGE antibody (ab37647) at 1/500 dilution

**Lane 1 :** HUVEC whole cell lysate

**Lane 2 :** EVC304 whole cell lysate

Lysates/proteins at 20 µg per lane.

### Secondary

**All lanes :** HRP conjugated goat anti-rabbit

Developed using the ECL technique.

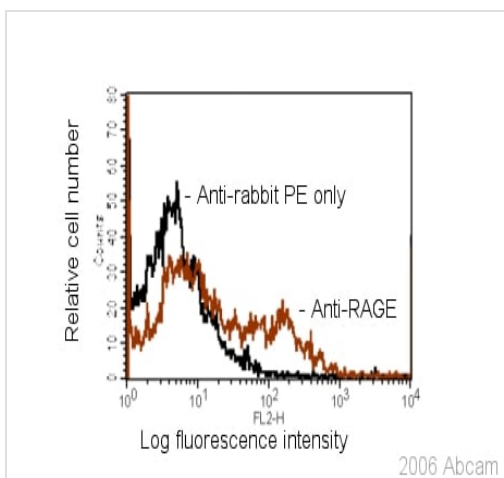
Performed under reducing conditions.

**Predicted band size:** 42 kDa

**Observed band size:** 17,40 kDa

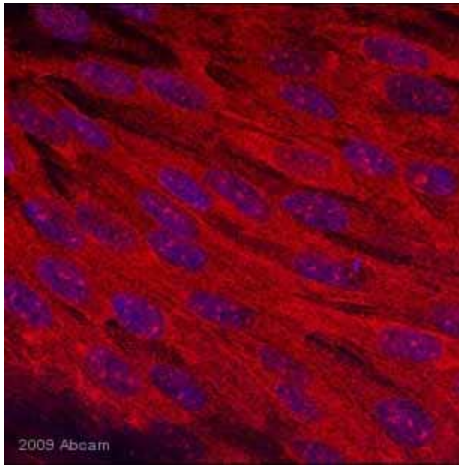
**Exposure time:** 4 minutes

The band at 52kDa is a tubulin loading control.



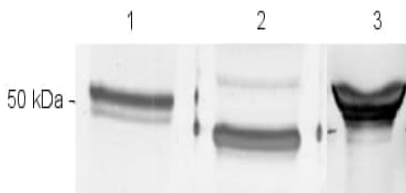
Flow Cytometry - Anti-RAGE antibody (ab37647)

RAW 264.7 cells were stained with anti-RAGE (1ug/million cells) for 1hr at 4 deg C followed by staining with anti-rabbit IgG-PE conjugate. Cells were analyzed by flow cytometry. Unstained cells or cells stained with secondary antibody alone are represented in the background



Immunocytochemistry/ Immunofluorescence - Anti-RAGE antibody (ab37647)

This image was kindly supplied by Dr Fabien Gosselet by Abreview



Abcam 2006

Western blot - Anti-RAGE antibody (ab37647)

ab37647 at a 1/100 dilution staining RAGE in bovine endothelial cells by Immunocytochemistry/ Immunofluorescence. Fixed in PFA, permeabilized with Triton X-100. Blocked using 10% serum for 20 minutes at room temperature. Secondary used at 1/200 polyclonal Goat anti-rabbit conjugated to Alexa Fluor 568 (red). Nuclear staining (blue).

**All lanes :** Anti-RAGE antibody (ab37647) at 1/2000 dilution

**Lane 1 :** Bovine lung extract

**Lane 2 :** Mouse lung extract

**Lane 3 :** HeLa cells expressing human soluble RAGE

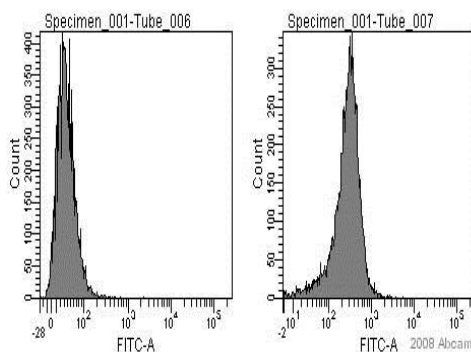
### Secondary

**All lanes :** anti-rabbit IgG alkaline phosphatase conjugate

**Predicted band size:** 42 kDa

**Observed band size:** 42 kDa

Bovine RAGE is slightly larger than human and mouse RAGE - 44kDa compared with 42kDa

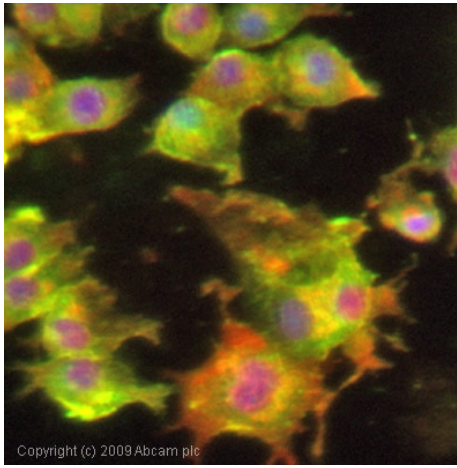


Flow Cytometry - Anti-RAGE antibody (ab37647)

This image is courtesy of an anonymous Abreview

ab37647 staining human Jurkat T cells by Flow Cytometry. The cells were prepared in PBS with 0.2% BSA. The primary antibody diluted 1/100 and incubated with sample for 30 minutes at 0°C. The secondary antibody was Alexa Fluor® 488 conjugated goat polyclonal to rabbit IgG, diluted 1/200.

Specimen tube 006 is negative control



Immunocytochemistry/ Immunofluorescence - Anti-RAGE antibody (ab37647)

ICC/IF image of ab37647 stained PC12 cells. The cells were 4% formaldehyde fixed (10 min) and then incubated in 1%BSA / 10% normal goat serum / 0.3M glycine in 0.1% PBS-Tween for 1h to permeabilise the cells and block non-specific protein-protein interactions. The cells were then incubated with the antibody (ab37647, 1µg/ml) overnight at +4°C. The secondary antibody (green) was Alexa Fluor® 488 goat anti-rabbit IgG (H+L) used at a 1/1000 dilution for 1h. Alexa Fluor® 594 WGA was used to label plasma membranes (red) at a 1/200 dilution for 1h. DAPI was used to stain the cell nuclei (blue) at a concentration of 1.43µM.

**Please note:** All products are "FOR RESEARCH USE ONLY. NOT FOR USE IN DIAGNOSTIC PROCEDURES"

### Our Abpromise to you: Quality guaranteed and expert technical support

- Replacement or refund for products not performing as stated on the datasheet
- Valid for 12 months from date of delivery
- Response to your inquiry within 24 hours
- We provide support in Chinese, English, French, German, Japanese and Spanish
- Extensive multi-media technical resources to help you
- We investigate all quality concerns to ensure our products perform to the highest standards

If the product does not perform as described on this datasheet, we will offer a refund or replacement. For full details of the Abpromise, please visit <https://www.abcam.co.jp/abpromise> or contact our technical team.

### Terms and conditions

- Guarantee only valid for products bought direct from Abcam or one of our authorized distributors