


# Anti-Rad51 antibody [EPR4031] ab109107

リコンビナント **RabMAb**

## 2 References [画像数 2](#)

### 製品の概要

|              |   |
|--------------|---|
| 製品名          | Anti-Rad51 antibody [EPR4031]   |
| 製品の詳細        | Rabbit monoclonal [EPR4031] to Rad51  |
| 由来種          | Rabbit  |
| アプリケーション     | <b>適用あり:</b> WB<br><b>適用なし:</b> ICC/IF or IHC-P   |
| 種交差性         | <b>交差種:</b> Human<br><b>交差が予測される動物種:</b> Mouse, Rat    |
| 免疫原          | Synthetic peptide. This information is proprietary to Abcam and/or its suppliers.   |
| ポジティブ・コントロール | HeLa, A431, 293T, and K562 cell lysates.  |
| 特記事項         | <p>This product is a recombinant monoclonal antibody, which offers several advantages including:</p> <ul style="list-style-type: none"> <li>- High batch-to-batch consistency and reproducibility</li> <li>- Improved sensitivity and specificity</li> <li>- Long-term security of supply</li> <li>- Animal-free production</li> </ul> <p>For more information <a href="#">see here</a>.</p> <p>Our RabMAb<sup>®</sup> technology is a patented hybridoma-based technology for making rabbit monoclonal antibodies. For details on our patents, please refer to <a href="#">RabMAb<sup>®</sup> patents</a>.</p> |

### 製品の特性

|       |   |
|-------|---|
| 製品の状態 | Liquid  |
| 保存方法  | Shipped at 4°C. Store at -20°C. Stable for 12 months at -20°C.  |
| バッファー | pH: 7.20<br>Preservative: 0.01% Sodium azide<br>Constituents: 9% PBS, 40% Glycerol (glycerin, glycerine), 0.05% BSA, 50% Tissue culture supernatant |
| 精製度   | Protein A purified  |
| ポリ/モノ | モノクローナル   |
| クローン名 | EPR4031   |

アイソタイプ

IgG

アプリケーション

The Abpromise guarantee

Abpromise保証は、次のテスト済みアプリケーションにおけるab109107の使用に適用されます  
アプリケーションノートには、推奨の開始希釈率がありますが、適切な希釈率につきましてはご確認ください。

| アプリケーション | Abreviews | 特記事項  |
|----------|-----------|---|
| WB       |           | 1/1000 - 1/10000. Predicted molecular weight: 36 kDa. |

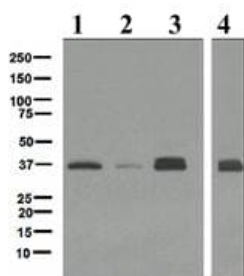
追加情報

Is unsuitable for ICC/IF or IHC-P.

ターゲット情報

|       |  |
|-------|--|
| 機能    | Plays an important role in homologous strand exchange, a key step in DNA repair through homologous recombination. Binds to single and double-stranded DNA and exhibits DNA-dependent ATPase activity. Catalyzes the recognition of homology and strand exchange between homologous DNA partners to form a joint molecule between a processed DNA break and the repair template. Binds to single-stranded DNA in an ATP-dependent manner to form nucleoprotein filaments which are essential for the homology search and strand exchange (PubMed:26681308). Part of a PALB2-scaffolded HR complex containing BRCA2 and RAD51C and which is thought to play a role in DNA repair by HR. Plays a role in regulating mitochondrial DNA copy number under conditions of oxidative stress in the presence of RAD51C and XRCC3. |
| 組織特異性 | Highly expressed in testis and thymus, followed by small intestine, placenta, colon, pancreas and ovary. Weakly expressed in breast.   |
| 関連疾患  | Breast cancer<br>Mirror movements 2<br>Defects in RAD51 are found in a patient with microcephaly, mental retardation without bone marrow failure and pediatric cancers.  |
| 配列類似性 | Belongs to the RecA family. RAD51 subfamily.<br>Contains 1 HhH domain.   |
| ドメイン  | The nuclear localization may reside in the C-terminus (between 259 and 339 AA).  |
| 翻訳後修飾 | Ubiquitinated by the SCF(FBXO18) E3 ubiquitin ligase complex, regulating RAD51 subcellular location and preventing its association with DNA.<br>Phosphorylated. Phosphorylation of Thr-309 by CHEK1 may enhance association with chromatin at sites of DNA damage and promote DNA repair by homologous recombination.<br>Phosphorylation by ABL1 inhibits function.  |
| 細胞内局在 | Nucleus. Cytoplasm. Cytoplasm, perinuclear region. Mitochondrion matrix. Cytoplasm, cytoskeleton, microtubule organizing center, centrosome. Colocalizes with RAD51AP1 and RPA2 to multiple nuclear foci upon induction of DNA damage. DNA damage induces an increase in nuclear levels. Together with FIGL1, redistributed in discrete nuclear DNA damage-induced foci after ionizing radiation (IR) or camptothecin (CPT) treatment. Accumulated at sites of DNA damage in a SPIDR-dependent manner.   |

画像



Western blot - Anti-Rad51 antibody [EPR4031]  
(ab109107)

**All lanes :** Anti-Rad51 antibody [EPR4031] (ab109107) at 1/1000 dilution

**Lane 1 :** HeLa cell lysate

**Lane 2 :** A431 cell lysate

**Lane 3 :** 293T cell lysate

**Lane 4 :** K562 cell lysate

Lysates/proteins at 10 µg per lane.

**Predicted band size:** 36 kDa

### Why choose a recombinant antibody?



**Research with confidence**  
Consistent and reproducible results



**Long-term and scalable supply**  
Recombinant technology



**Success from the first experiment**  
Confirmed specificity



**Ethical standards compliant**  
Animal-free production

Anti-Rad51 antibody [EPR4031] (ab109107)

**Please note:** All products are "FOR RESEARCH USE ONLY. NOT FOR USE IN DIAGNOSTIC PROCEDURES"

### Our Abpromise to you: Quality guaranteed and expert technical support

- Replacement or refund for products not performing as stated on the datasheet
- Valid for 12 months from date of delivery
- Response to your inquiry within 24 hours
- We provide support in Chinese, English, French, German, Japanese and Spanish
- Extensive multi-media technical resources to help you
- We investigate all quality concerns to ensure our products perform to the highest standards

If the product does not perform as described on this datasheet, we will offer a refund or replacement. For full details of the Abpromise, please visit <https://www.abcam.co.jp/abpromise> or contact our technical team.

### Terms and conditions

- Guarantee only valid for products bought direct from Abcam or one of our authorized distributors