


Anti-Rad50 antibody ab3622

★★★★★ [2 Abreviews](#) [2 References](#) [画像数 1](#)

製品の概要

製品名	Anti-Rad50 antibody
製品の詳細	Rabbit polyclonal to Rad50
由来種	Rabbit
アプリケーション	適用あり: IP
種交差性	交差種: Human 交差が予測される動物種: Mouse, Rat, Rabbit, Horse, Cow, Chimpanzee, Baboon, Rhesus monkey, Gorilla, Orangutan 
免疫原	Synthetic peptide (Human) - which represented a portion of human Rad 50 encoded in part by exons 2 and 3.
ポジティブ・コントロール	HeLa cell nuclear extract.
特記事項	<p>The Life Science industry has been in the grips of a reproducibility crisis for a number of years. Abcam is leading the way in addressing this with our range of recombinant monoclonal antibodies and knockout edited cell lines for gold-standard validation. Please check that this product meets your needs before purchasing.</p> <p>If you have any questions, special requirements or concerns, please send us an inquiry and/or contact our Support team ahead of purchase. Recommended alternatives for this product can be found below, along with publications, customer reviews and Q&As</p>

製品の特性

製品の状態	Liquid
保存方法	Shipped at 4°C. Upon delivery aliquot and store at -20°C. Avoid freeze / thaw cycles.
バッファー	<p>pH: 7</p> <p>Preservative: 0.1% Sodium azide</p> <p>Constituents: 0.021% PBS, 1.764% Sodium citrate, 1.815% Tris</p>
精製度	Immunogen affinity purified
ポリ/モノ	ポリクローナル
アイソタイプ	IgG

アプリケーション

The Abpromise guarantee

Abpromise保証は、次のテスト済みアプリケーションにおけるab3622の使用に適用されます

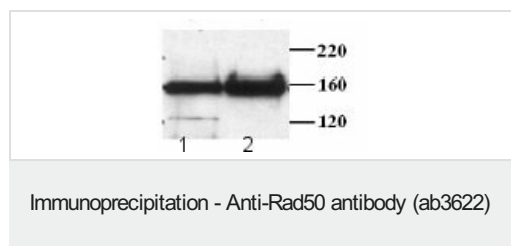
アプリケーションノートには、推奨の開始希釈率がありますが、適切な希釈率につきましてはご確認ください。

アプリケーション	Abreviews	特記事項
IP		Use a concentration of 1 - 4 µg/ml.

ターゲット情報

機能	Component of the MRN complex, which plays a central role in double-strand break (DSB) repair, DNA recombination, maintenance of telomere integrity and meiosis. The complex possesses single-strand endonuclease activity and double-strand-specific 3'-5' exonuclease activity, which are provided by MRE11A. RAD50 may be required to bind DNA ends and hold them in close proximity. This could facilitate searches for short or long regions of sequence homology in the recombining DNA templates, and may also stimulate the activity of DNA ligases and/or restrict the nuclease activity of MRE11A to prevent nucleolytic degradation past a given point. The complex may also be required for DNA damage signaling via activation of the ATM kinase. In telomeres the MRN complex may modulate t-loop formation.
組織特異性	Expressed at very low level in most tissues, except in testis where it is expressed at higher level. Expressed in fibroblasts.
関連疾患	Defects in RAD50 are the cause of Nijmegen breakage syndrome-like disorder (NBSLD) [MIM:613078]; also called NBS-like disorder or RAD50 deficiency. NBSLD is a disorder similar to Nijmegen breakage syndrome and characterized by chromosomal instability, radiation sensitivity, microcephaly, growth retardation, short stature and bird-like face. Immunodeficiency is absent.
配列類似性	Belongs to the SMC family. RAD50 subfamily. Contains 1 zinc-hook domain.
ドメイン	The zinc-hook, which separates the large intramolecular coiled coil regions, contains 2 Cys residues that coordinate one molecule of zinc with the help of the 2 Cys residues of the zinc-hook of another RAD50 molecule, thereby forming a V-shaped homodimer. The two heads of the homodimer, which constitute the ATP-binding domain, interact with the MRE11A homodimer.
翻訳後修飾	Phosphorylated upon DNA damage, probably by ATM or ATR.
細胞内局在	Nucleus. Chromosome > telomere. Localizes to discrete nuclear foci after treatment with genotoxic agents.

画像



Lanes:

1. IP from 1mg extract with 1.25g Rabbit anti-Rad 50 (exon 2-3) (ab3622)
2. IP from 1mg extract with 1.25µg Rabbit anti-Rad 50 (exon 13-14) (**ab3623**)

Sample: Nuclear extract from Hela cells

for Western blot, affinity purified Rabbit anti-Rad 50 (ab3622) used
at 1:4000 dilution

Please note: All products are "FOR RESEARCH USE ONLY. NOT FOR USE IN DIAGNOSTIC PROCEDURES"

Our Abpromise to you: Quality guaranteed and expert technical support

- Replacement or refund for products not performing as stated on the datasheet
- Valid for 12 months from date of delivery
- Response to your inquiry within 24 hours
- We provide support in Chinese, English, French, German, Japanese and Spanish
- Extensive multi-media technical resources to help you
- We investigate all quality concerns to ensure our products perform to the highest standards

If the product does not perform as described on this datasheet, we will offer a refund or replacement. For full details of the Abpromise, please visit <https://www.abcam.co.jp/abpromise> or contact our technical team.

Terms and conditions

- Guarantee only valid for products bought direct from Abcam or one of our authorized distributors