

Anti-Rad22 antibody ab63800

2 References [画像数 2](#)

製品の概要

製品名	Anti-Rad22 antibody
製品の詳細	Rabbit polyclonal to Rad22
由来種	Rabbit
アプリケーション	適用あり: ELISA, WB, IP, ICC/IF
種交差性	交差種: Schizosaccharomyces pombe
免疫原	Purified recombinant Rad22 protein (Schizosaccharomyces pombe)
ポジティブ・コントロール	Schizosaccharomyces pombe whole cell extracts.
特記事項	<p>The Life Science industry has been in the grips of a reproducibility crisis for a number of years. Abcam is leading the way in addressing this with our range of recombinant monoclonal antibodies and knockout edited cell lines for gold-standard validation. Please check that this product meets your needs before purchasing.</p> <p>If you have any questions, special requirements or concerns, please send us an inquiry and/or contact our Support team ahead of purchase. Recommended alternatives for this product can be found below, along with publications, customer reviews and Q&As</p>

製品の特性

製品の状態	Liquid
保存方法	Shipped at 4°C. Store at +4°C short term (1-2 weeks). Store at -20°C or -80°C. Avoid freeze / thaw cycle.
バッファー	pH: 6 Constituents: PBS, 50% Glycerol (glycerin, glycerine)
精製度	Immunogen affinity purified
ポリ/モノ	ポリクローナル
アイソタイプ	IgG

アプリケーション

The Abpromise guarantee **Abpromise保証は、次のテスト済みアプリケーションにおけるab63800の使用に適用されます**
 アプリケーションノートには、推奨の開始希釈率がありますが、適切な希釈率につきましてはご検討ください。

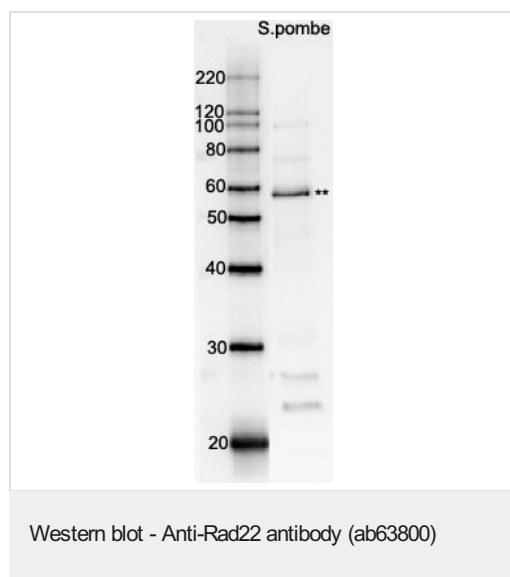
アプリケーション	Abreviews	特記事項
ELISA		Use at an assay dependent concentration.
WB		1/2000 - 1/5000. Detects a band of approximately 60 kDa (predicted molecular weight: 52 kDa).
IP		Use at an assay dependent concentration.
ICC/IF		Use at an assay dependent concentration.

ターゲット情報

関連性 Rad22 protein of *Schizosaccharomyces pombe* (fission yeast) is a functional and structural homolog of *S.cerevisiae* and human Rad52 proteins, which play a major role in genetic recombination and recombination repair by mediating the strand annealing reaction between homologous DNA strands.

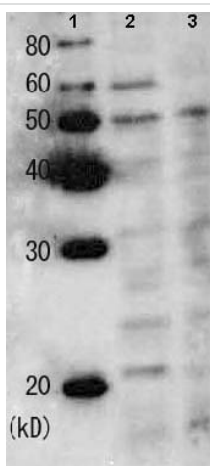
細胞内局在 Nuclear

画像



Anti-Rad22 antibody (ab63800) + *S.pombe* whole cell extract

Predicted band size: 52 kDa



Western blot - Anti-Rad22 antibody (ab63800)

All lanes : Anti-Rad22 antibody (ab63800) at 1/2000 dilution (unpurified)

Lane 1 : Molecular weight markers

Lane 2 : Whole cell extract of Schizosaccharomyces pombe wild-type strain

Lane 3 : Whole cell extract of Schizosaccharomyces pombe rad22 deletion strain

Predicted band size: 52 kDa

Observed band size: 60 kDa

Additional bands at: 50 kDa. We are unsure as to the identity of these extra bands.

ab63800 was used unpurified.

Please note: All products are "FOR RESEARCH USE ONLY. NOT FOR USE IN DIAGNOSTIC PROCEDURES"

Our Abpromise to you: Quality guaranteed and expert technical support

- Replacement or refund for products not performing as stated on the datasheet
- Valid for 12 months from date of delivery
- Response to your inquiry within 24 hours
- We provide support in Chinese, English, French, German, Japanese and Spanish
- Extensive multi-media technical resources to help you
- We investigate all quality concerns to ensure our products perform to the highest standards

If the product does not perform as described on this datasheet, we will offer a refund or replacement. For full details of the Abpromise, please visit <https://www.abcam.co.jp/abpromise> or contact our technical team.

Terms and conditions

- Guarantee only valid for products bought direct from Abcam or one of our authorized distributors