


### Anti-Rad21 antibody ab992

★★★★★ **20 Abreviews**   **186 References**   画像数 2

#### 製品の概要

製品名	Anti-Rad21 antibody
製品の詳細	Rabbit polyclonal to Rad21
由来種	Rabbit
特異性	The epitope recognized by Anti-Rad21 antibody (ab992) maps to a region between residue 575 and the C-terminus (residue 631) human Rad21 homolog using the numbering given in entry NP_006256.1 (GeneID 5885).
アプリケーション	<b>適用あり:</b> IP, WB
種交差性	<b>交差種:</b> Mouse, Human <b>交差が予測される動物種:</b> Rat, Rabbit, Horse, Chicken, Guinea pig, Cow, Dog, Turkey, Chimpanzee, Gorilla, Chinese hamster, Orangutan, Elephant 
免疫原	Synthetic peptide corresponding to Human Rad21 (C terminal) conjugated to keyhole limpet haemocyanin. Represented a portion of human Rad21 encoded within exon 14 (LocusLink ID 5885).
ポジティブ・コントロール	WB: HeLa, Jurkat, HEK293T, RKO, GaMG, MCF-7, A-549, U2OS, NIH/3T3, and TCMK-1 whole cell lysates.
特記事項	<p>The Life Science industry has been in the grips of a reproducibility crisis for a number of years. Abcam is leading the way in addressing this with our range of recombinant monoclonal antibodies and knockout edited cell lines for gold-standard validation. Please check that this product meets your needs before purchasing.</p> <p>If you have any questions, special requirements or concerns, please send us an inquiry and/or contact our Support team ahead of purchase. Recommended alternatives for this product can be found below, along with publications, customer reviews and Q&amp;As</p>

#### 製品の特性

製品の状態	Liquid
保存方法	Shipped at 4°C. Store at +4°C short term (1-2 weeks). Upon delivery aliquot. Store at -20°C. Avoid freeze / thaw cycle.
バッファー	pH: 7 Preservative: 0.1% Sodium azide Constituents: 0.021% PBS, 1.764% Sodium citrate, 1.815% Tris

精製度	Immunogen affinity purified
ポリ/モノ	ポリクローナル
アイソタイプ	IgG

アプリケーション

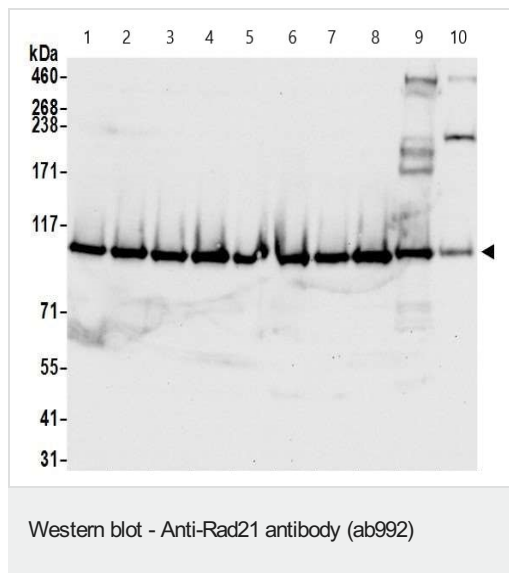
The Abpromise guarantee      **Abpromise保証は、次のテスト済みアプリケーションにおけるab992の使用に適用されます**  
 アプリケーションノートには、推奨の開始希釈率がありますが、適切な希釈率につきましてはご確認ください。

アプリケーション	Abreviews	特記事項
IP	★★★★★ (1)	Use at an assay dependent concentration. ab992 used for IP at 6 µg per reaction.
WB	★★★★★ (7)	1/500 - 1/5000. Predicted molecular weight: 72 kDa. Band observed at ~130 kDa.

ターゲット情報

機能	Cleavable component of the cohesin complex, involved in chromosome cohesion during cell cycle, in DNA repair, and in apoptosis. The cohesin complex is required for the cohesion of sister chromatids after DNA replication. The cohesin complex apparently forms a large proteinaceous ring within which sister chromatids can be trapped. At metaphase-anaphase transition, this protein is cleaved by separase/ESPL1 and dissociates from chromatin, allowing sister chromatids to segregate. The cohesin complex may also play a role in spindle pole assembly during mitosis. Also plays a role in apoptosis, via its cleavage by caspase-3/CASP3 or caspase-7/CASP7 during early steps of apoptosis: the C-terminal 64 kDa cleavage product may act as a nuclear signal to initiate cytoplasmic events involved in the apoptotic pathway.
配列類似性	Belongs to the rad21 family.
ドメイン	The C-terminal part associates with the head of SMC1A, while the N-terminal part binds to the head of SMC3.
翻訳後修飾	Cleaved by separase/ESPL1 at the onset of anaphase. Cleaved by caspase-3 and caspase-7 at the beginning of apoptosis. The cleavage by ESPL1 and caspase-3 take place at different sites. Phosphorylated; becomes hyperphosphorylated in M phase of cell cycle. The large dissociation of cohesin from chromosome arms during prophase may be partly due to its phosphorylation by PLK.
細胞内局在	Nucleus. Chromosome. Chromosome > centromere. Associates with chromatin. Before prophase it is scattered along chromosome arms. During prophase, most of cohesin complexes dissociate from chromatin probably because of phosphorylation by PLK, except at centromeres, where cohesin complexes remain. At anaphase, it is cleaved by separase/ESPL1, leading to the dissociation of the complex from chromosomes, allowing chromosome separation. Once cleaved by caspase-3, the C-terminal 64 kDa cleavage product translocates to the cytoplasm, where it may trigger apoptosis.

画像



**All lanes :** Anti-Rad21 antibody (ab992) at 0.04 µg/ml

**Lane 1 :** HeLa (human epithelial cell line from cervix adenocarcinoma) whole cell lysate

**Lane 2 :** Jurkat (human T cell leukemia cell line from peripheral blood) whole cell lysate

**Lane 3 :** HEK-293T (human epithelial cell line from embryonic kidney transformed with large T antigen) whole cell lysate

**Lane 4 :** RKO (human cell line from colon carcinoma) whole cell lysate

**Lane 5 :** GaMG (human cell line from glioblastoma) whole cell lysate

**Lane 6 :** MCF7 (human breast adenocarcinoma cell line) whole cell lysate

**Lane 7 :** A549 (human lung carcinoma cell line) whole cell lysate

**Lane 8 :** U-2 OS (human bone osteosarcoma epithelial cell line) whole cell lysate

**Lane 9 :** NIH/3T3 (mouse embryo fibroblast cell line) whole cell lysate

**Lane 10 :** TCMK-1 (mouse epithelial kidney cell line transformed with SV40) whole cell lysate

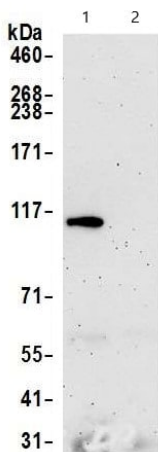
Lysates/proteins at 50 µg per lane.

Developed using the ECL technique.

**Predicted band size:** 72 kDa

**Exposure time:** 10 seconds

Lysates prepared using NETN lysis buffer.



Immunoprecipitation - Anti-Rad21 antibody (ab992)

Immunoprecipitation analysis of whole cell lysate (1.0 mg per IP reaction; 20% of IP loaded) from HeLa (human epithelial cell line from cervix adenocarcinoma) cells prepared using NETN lysis buffer.

**Lane 1:** ab992 used for IP at 6 µg per reaction

**Lane 2:** Control IgG

For blotting immunoprecipitated Rad21, a rabbit anti-Rad21 recombinant monoclonal antibody was used at 1/1000. Detected using chemiluminescence with an exposure time of 3 minutes.

**Please note:** All products are "FOR RESEARCH USE ONLY. NOT FOR USE IN DIAGNOSTIC PROCEDURES"

### Our Abpromise to you: Quality guaranteed and expert technical support

- Replacement or refund for products not performing as stated on the datasheet
- Valid for 12 months from date of delivery
- Response to your inquiry within 24 hours
- We provide support in Chinese, English, French, German, Japanese and Spanish
- Extensive multi-media technical resources to help you
- We investigate all quality concerns to ensure our products perform to the highest standards

If the product does not perform as described on this datasheet, we will offer a refund or replacement. For full details of the Abpromise, please visit <https://www.abcam.co.jp/abpromise> or contact our technical team.

### Terms and conditions

- Guarantee only valid for products bought direct from Abcam or one of our authorized distributors