


### Anti-RAC3 antibody [EPR6679(B)] ab124943

リコンビナント RabMAb<sup>®</sup>

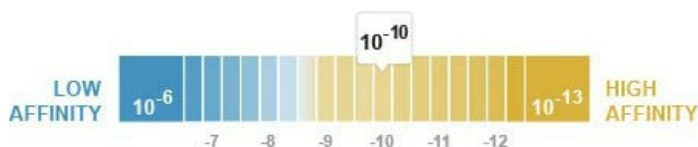
#### 4 References 画像数 6

#### 製品の概要

製品名	Anti-RAC3 antibody [EPR6679(B)]
製品の詳細	Rabbit monoclonal [EPR6679(B)] to RAC3
由来種	Rabbit
特異性	ab124943 cross-reacts with Rac1, Rac2 and Cdc42
アプリケーション	<b>適用あり:</b> WB, IHC-P, ICC/IF <b>適用なし:</b> Flow Cyt or IP
種交差性	<b>交差種:</b> Human <b>交差が予測される動物種:</b> Mouse, Rat 
免疫原	Synthetic peptide within Human RAC3 aa 50-150. The exact sequence is proprietary.
ポジティブ・コントロール	Human heart tissue, Human placenta tissue; JAR cells; Human fetal brain lysate, SH-SY5Y, JAR and BxPC-3 cell lysates
特記事項	This product is a recombinant monoclonal antibody, which offers several advantages including: <ul style="list-style-type: none"> <li>- High batch-to-batch consistency and reproducibility</li> <li>- Improved sensitivity and specificity</li> <li>- Long-term security of supply</li> <li>- Animal-free production</li> </ul> For more information <a href="#">see here</a> . Our RabMAb <sup>®</sup> technology is a patented hybridoma-based technology for making rabbit monoclonal antibodies. For details on our patents, please refer to <a href="#">RabMAb<sup>®</sup> patents</a> .

#### 製品の特性

製品の状態	Liquid
保存方法	Shipped at 4°C. Store at -20°C. Stable for 12 months at -20°C.
解離定数 (K <sub>D</sub> 値)	K <sub>D</sub> = 1.23 x 10 <sup>-10</sup> M



[Learn more about K<sub>D</sub>](#)

バッファー	pH: 7.20 Preservative: 0.05% Sodium azide Constituents: 40% Glycerol (glycerin, glycerine), 9.85% Tris glycine, 50% Tissue culture supernatant
精製度	Protein A purified
ポリ/モノ	モノクローナル
クローン名	EPR6679(B)
アイソタイプ	IgG

#### アプリケーション

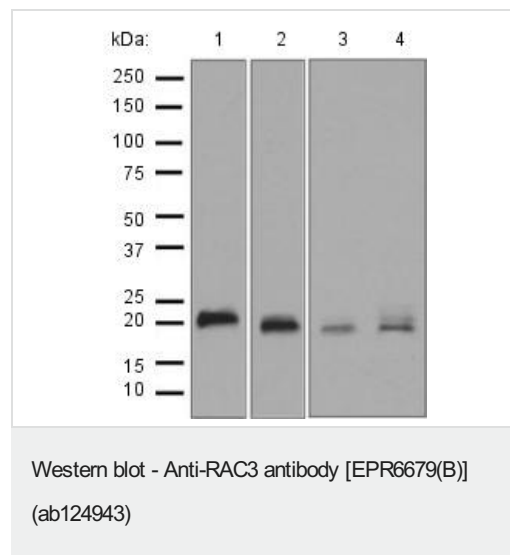
**The Abpromise guarantee**      **Abpromise保証は、次のテスト済みアプリケーションにおけるab124943の使用に適用されます**  
アプリケーションノートには、推奨の開始希釈率がありますが、適切な希釈率につきましてはご検討ください。

アプリケーション	Abreviews	特記事項
WB		1/1000 - 1/10000. Predicted molecular weight: 21 kDa.
IHC-P		1/50 - 1/100. Perform heat mediated antigen retrieval with citrate buffer pH 6 before commencing with IHC staining protocol. antigen retrieval is recommended.
ICC/IF		1/50 - 1/100.

**追加情報**      Is unsuitable for Flow Cyt or IP.

#### ターゲット情報

機能	Plasma membrane-associated small GTPase which cycles between an active GTP-bound and inactive GDP-bound state. In active state binds to a variety of effector proteins to regulate cellular responses, such as cell spreading and the formation of actin-based protrusions including lamellipodia and membrane ruffles. Promotes cell adhesion and spreading on fibrinogen in a CIB1 and alpha-IIb/beta3 integrin-mediated manner.
組織特異性	Highest levels in brain, also detected in heart, placenta and pancreas.
配列類似性	Belongs to the small GTPase superfamily. Rho family.
翻訳後修飾	(Microbial infection) Glycosylated at Tyr-32 by Photorehabdus asymbiotica toxin PAU_02230. Mono-O-GlcNAcylation by PAU_02230 inhibits downstream signaling by an impaired interaction with diverse regulator and effector proteins of Rac and leads to actin disassembly.
細胞内局在	Cytoplasm. Endomembrane system. Cell projection, lamellipodium. Cytoplasm, perinuclear region. Cell membrane. Cytoplasm, cytoskeleton. Membrane-associated when activated. Colocalizes with NRBP to endomembranes and at the cell periphery in lamellipodia. Colocalized with CIB1 in the perinuclear area and at the cell periphery.
製品の状態	Rac3 has high sequence homology with other Rac proteins. Therefore some antibodies may show cross-reactivity.



**All lanes** : Anti-RAC3 antibody [EPR6679(B)] (ab124943) at 1/1000 dilution

**Lane 1** : Human fetal brain tissue lysate

**Lane 2** : SH-SY5Y cell lysate

**Lane 3** : JAR cell lysate

**Lane 4** : BxPC-3 cell lysate

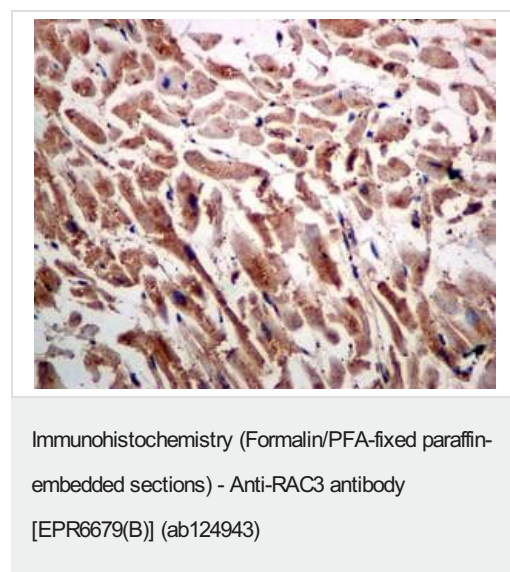
Lysates/proteins at 10 µg per lane.

## Secondary

**All lanes** : standard HRP labelled goat anti-rabbit at 1/2000 dilution

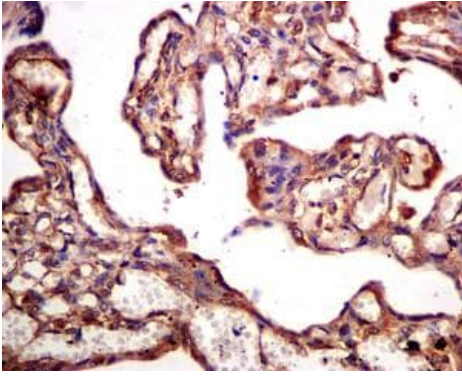
Developed using the ECL technique.

**Predicted band size:** 21 kDa



ab124943, at a 1/50 dilution, staining RAC3 in paraffin-embedded Human heart tissue by immunohistochemistry

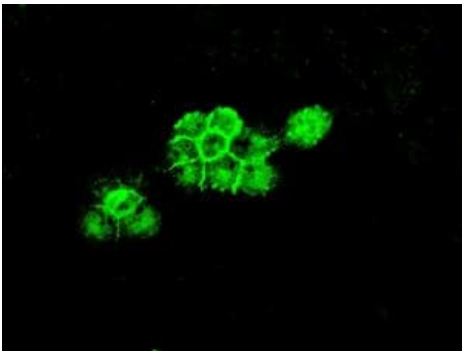
Perform heat mediated antigen retrieval with citrate buffer pH 6 before commencing with IHC staining protocol.



Immunohistochemistry (Formalin/PFA-fixed paraffin-embedded sections) - Anti-RAC3 antibody [EPR6679(B)] (ab124943)

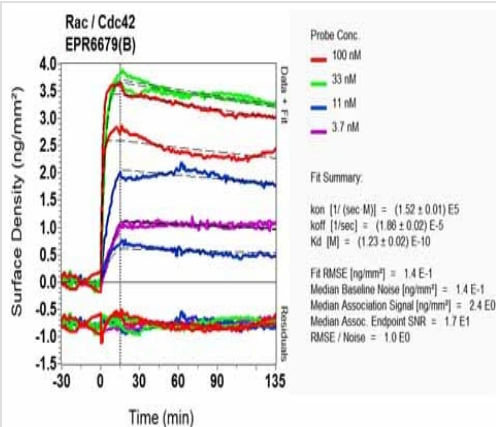
ab124943, at a 1/50 dilution, staining RAC3 in paraffin-embedded Human placenta tissue by immunohistochemistry

Perform heat mediated antigen retrieval with citrate buffer pH 6 before commencing with IHC staining protocol.



Immunocytochemistry/ Immunofluorescence - Anti-RAC3 antibody [EPR6679(B)] (ab124943)

ab124943, at a 1/50 dilution, staining RAC3 in JAR cells by immunofluorescence



SPR Scanning - Anti-RAC3 antibody [EPR6679(B)] (ab124943)

Equilibrium dissociation constant ( $K_D$ )

Learn more about  $K_D$

[Click here to learn more about  \$K\_D\$](#)

### Why choose a recombinant antibody?



**Research with confidence**  
Consistent and reproducible results



**Long-term and scalable supply**  
Recombinant technology



**Success from the first experiment**  
Confirmed specificity



**Ethical standards compliant**  
Animal-free production

Anti-RAC3 antibody [EPR6679(B)] (ab124943)

**Please note:** All products are "FOR RESEARCH USE ONLY. NOT FOR USE IN DIAGNOSTIC PROCEDURES"

### Our Abpromise to you: Quality guaranteed and expert technical support

---

- Replacement or refund for products not performing as stated on the datasheet
- Valid for 12 months from date of delivery
- Response to your inquiry within 24 hours
- We provide support in Chinese, English, French, German, Japanese and Spanish
- Extensive multi-media technical resources to help you
- We investigate all quality concerns to ensure our products perform to the highest standards

If the product does not perform as described on this datasheet, we will offer a refund or replacement. For full details of the Abpromise, please visit <https://www.abcam.co.jp/abpromise> or contact our technical team.

### Terms and conditions

---

- Guarantee only valid for products bought direct from Abcam or one of our authorized distributors