



Anti-RAC2 antibody ab2244

11 References **画像数 3**

製品の概要

製品名	Anti-RAC2 antibody
製品の詳細	Goat polyclonal to RAC2
由来種	Goat
アプリケーション	適用あり: WB, IHC-P
種交差性	交差種: Human
免疫原	Synthetic peptide: PQPTRQQKRACSL , corresponding to C terminal amino acids 179-192 of Human RAC2.  Run BLAST with  Run BLAST with
ポジティブ・コントロール	Recombinant Human RAC2 protein (ab78684) can be used as a positive control in WB. MOLT4 or liver lysate.
特記事項	Principal Names - RAC2; ras-related C3 botulinum toxin substrate 2 (rho family, small GTP binding protein Rac2); EN-7; Ras-related C3 botulinum toxin substrate 2; rho family, small GTP binding protein Rac2; Ras-related C3 botulinum toxin substrate 3 (rho family, small GTP); Gx; HSPC022. Official Gene Symbol - RAC2. GenBank Accession Number – NP_002863. LocusLink ID - 5880. The Life Science industry has been in the grips of a reproducibility crisis for a number of years. Abcam is leading the way in addressing this with our range of recombinant monoclonal antibodies and knockout edited cell lines for gold-standard validation. Please check that this product meets your needs before purchasing. If you have any questions, special requirements or concerns, please send us an inquiry and/or contact our Support team ahead of purchase. Recommended alternatives for this product can be found below, along with publications, customer reviews and Q&As

製品の特性

製品の状態	Liquid
保存方法	Shipped at 4°C. Upon delivery aliquot and store at -20°C or -80°C. Avoid repeated freeze / thaw cycles.
バッファー	pH: 7.30 Preservative: 0.02% Sodium azide Constituents: Tris buffered saline, 0.5% BSA

精製度	Immunogen affinity purified
特記事項 (精製)	Purified from goat serum by ammonium sulphate precipitation followed by antigen affinity chromatography using the immunizing peptide.
ポリ/モノ	ポリクローナル
アイソタイプ	IgG

アプリケーション

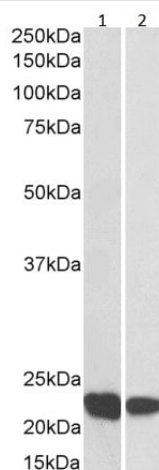
The Abpromise guarantee **Abpromise保証は、次のテスト済みアプリケーションにおけるab2244の使用に適用されます**
 アプリケーションノートには、推奨の開始希釈率がありますが、適切な希釈率につきましてはご検討ください。

アプリケーション	Abreviews	特記事項
WB		Use a concentration of 0.1 - 1 µg/ml. Predicted molecular weight: 21 kDa. A 1 hour primary incubation is recommended for this product.
IHC-P		Use a concentration of 0.3 µg/ml. Perform heat mediated antigen retrieval before commencing with IHC staining protocol. In Human Tonsil most cells in the mantle zone and interfollicular area are stained whilst those in the germinal centres remain negative.

ターゲット情報

機能	Plasma membrane-associated small GTPase which cycles between an active GTP-bound and inactive GDP-bound state. In active state binds to a variety of effector proteins to regulate cellular responses, such as secretory processes, phagocytosis of apoptotic cells and epithelial cell polarization. Augments the production of reactive oxygen species (ROS) by NADPH oxidase.
組織特異性	Hematopoietic specific.
関連疾患	Defects in RAC2 are the cause of neutrophil immunodeficiency syndrome (NEUID) [MIM:608203].
配列類似性	Belongs to the small GTPase superfamily. Rho family.
細胞内局在	Cytoplasm. Membrane-associated when activated.
製品の状態	Rac2 has high sequence homology with other Rac proteins. Therefore some antibodies may show cross-reactivity.

画像



Western blot - Anti-RAC2 antibody (ab2244)

All lanes : Anti-RAC2 antibody (ab2244) at 0.1 µg/ml

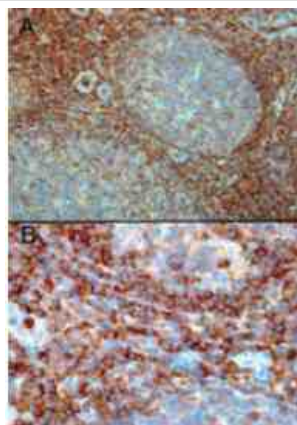
Lane 1 : Human thymus tissue lysate

Lane 2 : Human tonsil tissue lysate

Lysates/proteins at 35 µg per lane.

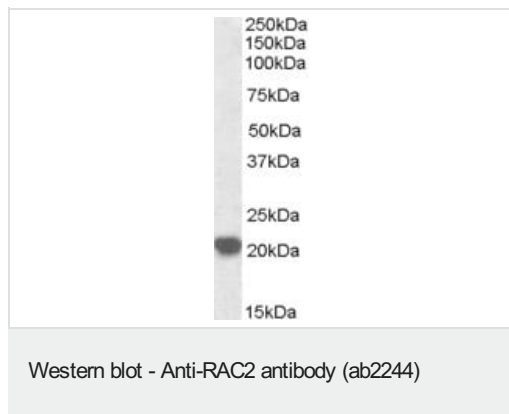
Predicted band size: 21 kDa

Primary incubation was 1 hour. Detected by chemiluminescence.



Immunohistochemistry (Formalin/PFA-fixed paraffin-embedded sections) - Anti-RAC2 antibody (ab2244)

Immunohistochemical analysis of paraffin embedded Human Tonsil tissue section labelling RAC2 with ab2244 (0.3µg/ml). Microwaved antigen retrieval with Tris/EDTA buffer pH9, HRP-staining. A) Strong staining in the interfollicular area and mantle zone but the majority of cells in germinal centre are negative. B) Higher magnification of interfollicular area showing positive cells.



Anti-RAC2 antibody (ab2244) at 0.3 µg/ml + MOLT4 cell lysate at 35 µg

Predicted band size: 21 kDa

Observed band size: 20 kDa

Primary incubated for 1 hour. Detected by western blot using chemiluminescence.

Please note: All products are "FOR RESEARCH USE ONLY. NOT FOR USE IN DIAGNOSTIC PROCEDURES"

Our Abpromise to you: Quality guaranteed and expert technical support

- Replacement or refund for products not performing as stated on the datasheet
- Valid for 12 months from date of delivery
- Response to your inquiry within 24 hours
- We provide support in Chinese, English, French, German, Japanese and Spanish
- Extensive multi-media technical resources to help you
- We investigate all quality concerns to ensure our products perform to the highest standards

If the product does not perform as described on this datasheet, we will offer a refund or replacement. For full details of the Abpromise, please visit <https://www.abcam.co.jp/abpromise> or contact our technical team.

Terms and conditions

- Guarantee only valid for products bought direct from Abcam or one of our authorized distributors