

Anti-RABL3 antibody ab122257

画像数 5

製品の概要

| | |
|--------------|---|
| 製品名 | Anti-RABL3 antibody |
| 製品の詳細 | Rabbit polyclonal to RABL3 |
| 由来種 | Rabbit |
| アプリケーション | 適用あり: IHC-P, WB |
| 種交差性 | 交差種: Human |
| 免疫原 | antigen sequence: LAEDFNPEEI NLDCTNPRYL AAGSSNAVKL SRFFDKVIEK RYFLREGNQI PGFPDRKRFAG TLKSLHYD, corresponding to amino acids 167-236 of Human RABL3. Run BLAST with ExPASy Run BLAST with NCBI |
| ポジティブ・コントロール | IHC-P: Human prostate, endometrium, kidney and tonsil tissues; WB: RT 4 and U 251 MG cells lysate. |
| 特記事項 | <p>The Life Science industry has been in the grips of a reproducibility crisis for a number of years. Abcam is leading the way in addressing this with our range of recombinant monoclonal antibodies and knockout edited cell lines for gold-standard validation. Please check that this product meets your needs before purchasing.</p> <p>If you have any questions, special requirements or concerns, please send us an inquiry and/or contact our Support team ahead of purchase. Recommended alternatives for this product can be found below, along with publications, customer reviews and Q&As</p> |

製品の特性

| | |
|--------|---|
| 製品の状態 | Liquid |
| 保存方法 | Shipped at 4°C. Upon delivery aliquot and store at -20°C. Avoid freeze / thaw cycles. |
| バッファー | pH: 7.20 Preservative: 0.02% Sodium azide Constituents: 59% PBS, 40% Glycerol (glycerin, glycerine) |
| 精製度 | Immunogen affinity purified |
| ポリ/モノ | ポリクローナル |
| アイソタイプ | IgG |

アプリケーション

The Abpromise guarantee

Abpromise保証は、次のテスト済みアプリケーションにおけるab122257の使用に適用されます

アプリケーションノートには、推奨の開始希釈率がありますが、適切な希釈率につきましてはご検討ください。

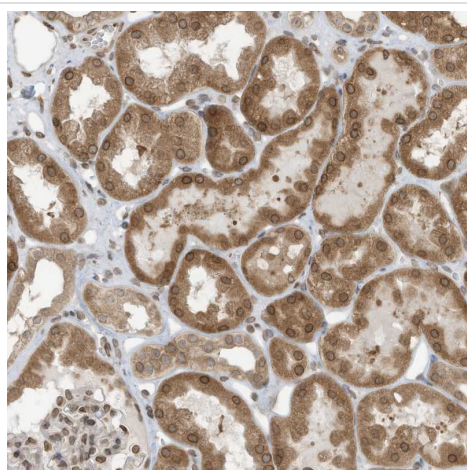
| アプリケーション | Abreviews | 特記事項 |
|----------|-----------|--|
| IHC-P | | 1/50 - 1/200. Perform heat mediated antigen retrieval with citrate buffer pH 6 before commencing with IHC staining protocol. |
| WB | | Use a concentration of 0.04 - 0.4 µg/ml. |

ターゲット情報

配列類似性

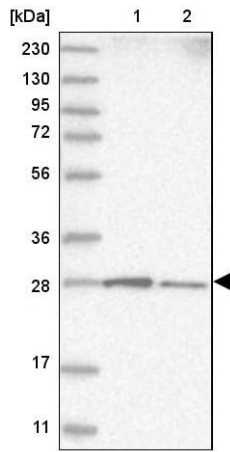
Belongs to the small GTPase superfamily. Rab family.

画像



Immunohistochemistry (Formalin/PFA-fixed paraffin-embedded sections) analysis of human kidney tissue labelling RABL3 with ab122257 at 1/50 dilution. Heat mediated antigen retrieval performed with citrate buffer pH 6 before commencing with IHC staining protocol.

Immunohistochemistry (Formalin/PFA-fixed paraffin-embedded sections) - Anti-RABL3 antibody (ab122257)

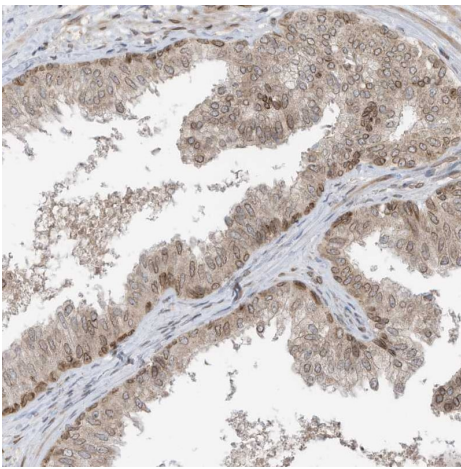


Western blot - Anti-RABL3 antibody (ab122257)

All lanes : Anti-RABL3 antibody (ab122257) at 0.4 µg/ml

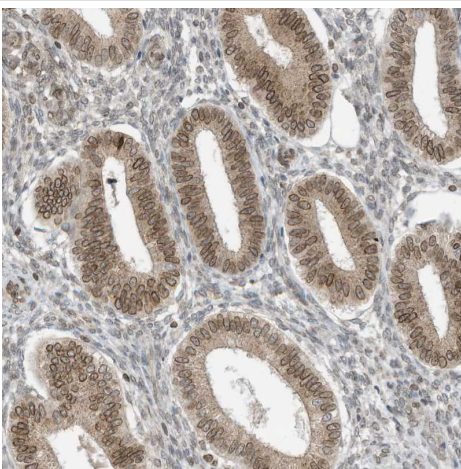
Lane 1 : RT4 (human urinary bladder cancer cell line) cell lysate

Lane 2 : U-251 MG (formally U-373 MG) (human brain glioma cell line) cell lysate



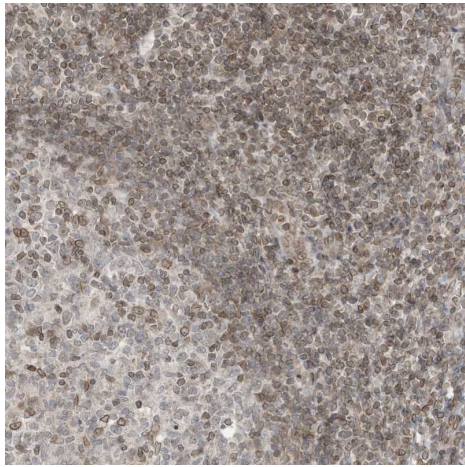
Immunohistochemistry (Formalin/PFA-fixed paraffin-embedded sections) - Anti-RABL3 antibody (ab122257)

Immunohistochemistry (Formalin/PFA-fixed paraffin-embedded sections) analysis of human prostate tissue labelling RABL3 with ab122257 at 1/50 dilution. Heat mediated antigen retrieval performed with citrate buffer pH 6 before commencing with IHC staining protocol.



Immunohistochemistry (Formalin/PFA-fixed paraffin-embedded sections) - Anti-RABL3 antibody (ab122257)

Immunohistochemistry (Formalin/PFA-fixed paraffin-embedded sections) analysis of human endometrium tissue labelling RABL3 with ab122257 at 1/50 dilution. Heat mediated antigen retrieval performed with citrate buffer pH 6 before commencing with IHC staining protocol.



Immunohistochemistry (Formalin/PFA-fixed paraffin-embedded sections) analysis of human tonsil tissue labelling RABL3 with ab122257 at 1/50 dilution. Heat mediated antigen retrieval performed with citrate buffer pH 6 before commencing with IHC staining protocol.

Immunohistochemistry (Formalin/PFA-fixed paraffin-embedded sections) - Anti-RABL3 antibody (ab122257)

Please note: All products are "FOR RESEARCH USE ONLY. NOT FOR USE IN DIAGNOSTIC PROCEDURES"

Our Abpromise to you: Quality guaranteed and expert technical support

- Replacement or refund for products not performing as stated on the datasheet
- Valid for 12 months from date of delivery
- Response to your inquiry within 24 hours
- We provide support in Chinese, English, French, German, Japanese and Spanish
- Extensive multi-media technical resources to help you
- We investigate all quality concerns to ensure our products perform to the highest standards

If the product does not perform as described on this datasheet, we will offer a refund or replacement. For full details of the Abpromise, please visit <https://www.abcam.co.jp/abpromise> or contact our technical team.

Terms and conditions

- Guarantee only valid for products bought direct from Abcam or one of our authorized distributors