


Rabbit polyclonal to GAD67/GAD1 ab97739

★★★★☆ **3 Abreviews** **10 References** **画像数 3**

製品の概要

製品名	Rabbit polyclonal to GAD67/GAD1
由来種	Rabbit
アプリケーション	適用あり: WB, ICC/IF
種交差性	交差種: Mouse, Human 交差が予測される動物種: Rat, Cow, Cat, Dog, Pig, Zebrafish 
免疫原	Recombinant fragment within Human GAD1/GAD67 aa 1-200. The exact immunogen sequence used to generate this antibody is proprietary information. If additional detail on the immunogen is needed to determine the suitability of the antibody for your needs, please contact our Scientific Support team to discuss your requirements. Database link: Q99259-1
ポジティブ・コントロール	H1299, HeLa, HepG2, Molt-4, Raji and NIH-3T3 cells
特記事項	<p>The Life Science industry has been in the grips of a reproducibility crisis for a number of years. Abcam is leading the way in addressing this with our range of recombinant monoclonal antibodies and knockout edited cell lines for gold-standard validation. Please check that this product meets your needs before purchasing.</p> <p>If you have any questions, special requirements or concerns, please send us an inquiry and/or contact our Support team ahead of purchase. Recommended alternatives for this product can be found below, along with publications, customer reviews and Q&As</p>

製品の特性

製品の状態	Liquid
保存方法	Shipped at 4°C. Upon delivery aliquot. Store at -20°C or -80°C. Avoid freeze / thaw cycle.
バッファー	pH: 7.00 Preservative: 0.025% Proclin 300 Constituents: 78% PBS, 1% BSA, 20% Glycerol (glycerin, glycerine)
精製度	Immunogen affinity purified
ポリ/モノ	ポリクローナル
アイソタイプ	IgG

アプリケーション

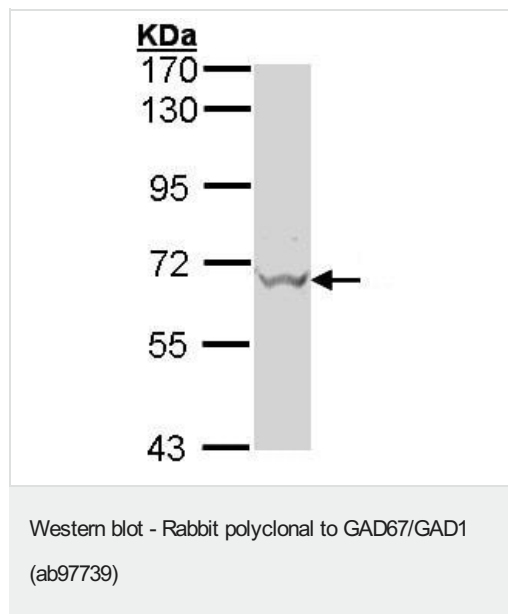
The Abpromise guarantee **Abpromise保証は、次のテスト済みアプリケーションにおけるab97739の使用に適用されず**
アプリケーションノートには、推奨の開始希釈率がありますが、適切な希釈率につきましてはご検討ください。

アプリケーション	Abreviews	特記事項
WB		1/500 - 1/3000. Predicted molecular weight: 67 kDa.
ICC/IF	★★★★★ (1)	1/100 - 1/200.

ターゲット情報

機能	Catalyzes the production of GABA.
組織特異性	Isoform 3 is expressed in pancreatic islets, testis, adrenal cortex, and perhaps other endocrine tissues, but not in brain.
関連疾患	Defects in GAD1 are the cause of cerebral palsy spastic quadriplegic type 1 (CPSQ1) [MIM:603513]. A non-progressive disorder of movement and/or posture resulting from defects in the developing central nervous system. Affected individuals manifest symmetrical, non-progressive spasticity and no adverse perinatal history or obvious underlying alternative diagnosis. Developmental delay, mental retardation and sometimes epilepsy can be part of the clinical picture.
配列類似性	Belongs to the group II decarboxylase family.

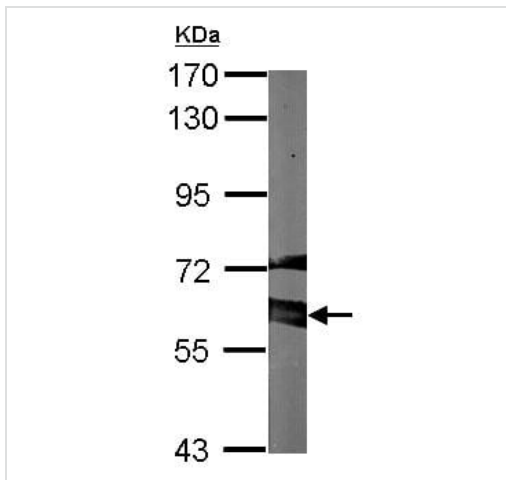
画像



Rabbit polyclonal to GAD67/GAD1 (ab97739) at 1/500 dilution +
HepG2 whole cell lysate at 30 µg

Predicted band size: 67 kDa

7.5% SDS PAGE

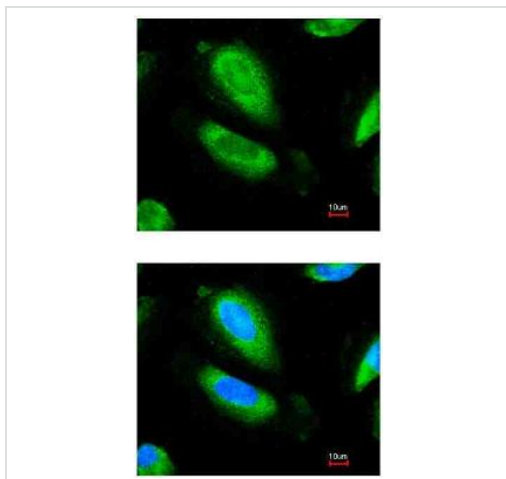


Rabbit polyclonal to GAD67/GAD1 (ab97739) at 1/1000 dilution + NIH-3T3 whole cell lysate at 30 µg

Predicted band size: 67 kDa

7.5% SDS PAGE

Western blot - Rabbit polyclonal to GAD67/GAD1 (ab97739)



Immunofluorescence analysis of paraformaldehyde-fixed HeLa, using GAD1/GAD67 antibody (ab97739) at 1/200 dilution. Lower image was also merged with DNA probe.

Immunocytochemistry/ Immunofluorescence - Rabbit polyclonal to GAD67/GAD1 (ab97739)

Please note: All products are "FOR RESEARCH USE ONLY. NOT FOR USE IN DIAGNOSTIC PROCEDURES"

Our Abpromise to you: Quality guaranteed and expert technical support

- Replacement or refund for products not performing as stated on the datasheet
- Valid for 12 months from date of delivery
- Response to your inquiry within 24 hours
- We provide support in Chinese, English, French, German, Japanese and Spanish
- Extensive multi-media technical resources to help you

- We investigate all quality concerns to ensure our products perform to the highest standards

If the product does not perform as described on this datasheet, we will offer a refund or replacement. For full details of the Abpromise, please visit <https://www.abcam.co.jp/abpromise> or contact our technical team.

Terms and conditions

- Guarantee only valid for products bought direct from Abcam or one of our authorized distributors