

Rabbit monoclonal [EPR2550] to GAD67/GAD1 ab108626

リコンビナント RabMAb[®]

1 References [画像数 2](#)

製品の概要

製品名	Rabbit monoclonal [EPR2550] to GAD67/GAD1
由来種	Rabbit
アプリケーション	適用あり: WB 適用なし: Flow Cyt, ICC/IF or IHC-P
種交差性	交差種: Mouse, Rat, Human
免疫原	Synthetic peptide. This information is proprietary to Abcam and/or its suppliers.
ポジティブ・コントロール	Human fetal brain, SH-SY5Y, Human fetal hypothalamus, Jurkat, C6, and Neuro2a cell lysates.
特記事項	<p>This product is a recombinant monoclonal antibody, which offers several advantages including:</p> <ul style="list-style-type: none">- High batch-to-batch consistency and reproducibility- Improved sensitivity and specificity- Long-term security of supply- Animal-free production <p>For more information see here.</p> <p>Our RabMAb[®] technology is a patented hybridoma-based technology for making rabbit monoclonal antibodies. For details on our patents, please refer to RabMAb[®] patents.</p>

製品の特性

製品の状態	Liquid
保存方法	Shipped at 4°C. Store at -20°C. Stable for 12 months at -20°C.
バッファー	pH: 7.20 Preservative: 0.01% Sodium azide Constituents: 59% PBS, 40% Glycerol (glycerin, glycerine), 0.5% BSA
精製度	Protein A purified
ポリ/モノ	モノクローナル
クローン名	EPR2550
アイソタイプ	IgG

アプリケーション

The Abpromise guarantee **Abpromise保証は、次のテスト済みアプリケーションにおけるab108626の使用に適用されます**
アプリケーションノートには、推奨の開始希釈率がありますが、適切な希釈率につきましてはご検討ください。

アプリケーション	Abreviews	特記事項
WB		1/1000 - 1/10000. Predicted molecular weight: 67 kDa.

追加情報 Is unsuitable for Flow Cyt, ICC/IF or IHC-P.

ターゲット情報

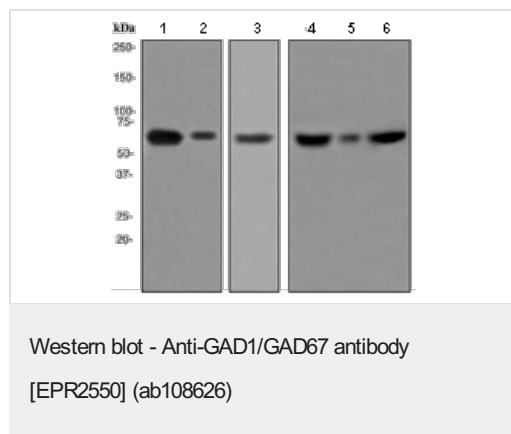
機能 Catalyzes the production of GABA.

組織特異性 Isoform 3 is expressed in pancreatic islets, testis, adrenal cortex, and perhaps other endocrine tissues, but not in brain.

関連疾患 Defects in GAD1 are the cause of cerebral palsy spastic quadriplegic type 1 (CPSQ1) [MIM:603513]. A non-progressive disorder of movement and/or posture resulting from defects in the developing central nervous system. Affected individuals manifest symmetrical, non-progressive spasticity and no adverse perinatal history or obvious underlying alternative diagnosis. Developmental delay, mental retardation and sometimes epilepsy can be part of the clinical picture.

配列類似性 Belongs to the group II decarboxylase family.

画像




All lanes : Rabbit monoclonal [EPR2550] to GAD67/GAD1 (ab108626) at 1/1000 dilution

- Lane 1 :** Human fetal brain cell lysate
- Lane 2 :** SH-SY5Y cell lysate
- Lane 3 :** Human fetal hypothalamus cell lysate
- Lane 4 :** Jurkat cell lysate
- Lane 5 :** C6 cell lysate
- Lane 6 :** Neuro2a cell lysate

Lysates/proteins at 10 µg per lane.

Predicted band size: 67 kDa

Why choose a recombinant antibody?



Research with confidence
Consistent and reproducible results

Long-term and scalable supply
Recombinant technology

Success from the first experiment
Confirmed specificity

Ethical standards compliant
Animal-free production

Anti-GAD1/GAD67 antibody [EPR2550] (ab108626)

Please note: All products are "FOR RESEARCH USE ONLY. NOT FOR USE IN DIAGNOSTIC PROCEDURES"

Our Abpromise to you: Quality guaranteed and expert technical support

- Replacement or refund for products not performing as stated on the datasheet
- Valid for 12 months from date of delivery
- Response to your inquiry within 24 hours
- We provide support in Chinese, English, French, German, Japanese and Spanish
- Extensive multi-media technical resources to help you
- We investigate all quality concerns to ensure our products perform to the highest standards

If the product does not perform as described on this datasheet, we will offer a refund or replacement. For full details of the Abpromise, please visit <https://www.abcam.co.jp/abpromise> or contact our technical team.

Terms and conditions

- Guarantee only valid for products bought direct from Abcam or one of our authorized distributors