

# Rabbit IgG, polyclonal - Isotype Control ab37415

[236 References](#) [画像数 2](#)

### 製品の概要

製品名	Rabbit IgG, polyclonal - Isotype Control
特異性	This antibody has been selected to be an isotype control as it has no known specificity. Please note that the rabbit IgG Fc region may bind nonspecifically to human tissue. Rabbit IgG is an isotype control used to estimate the non-specific binding of target primary antibodies due to Fc binding or other protein-protein interactions.
アプリケーション	<b>適用あり:</b> IHC-P, ICC/IF, ELISA, Flow Cyt, ChIP/Chip
特記事項	<p>The Life Science industry has been in the grips of a reproducibility crisis for a number of years. Abcam is leading the way in addressing this with our range of recombinant monoclonal antibodies and knockout edited cell lines for gold-standard validation. Please check that this product meets your needs before purchasing.</p> <p>If you have any questions, special requirements or concerns, please send us an inquiry and/or contact our Support team ahead of purchase. Recommended alternatives for this product can be found below, along with publications, customer reviews and Q&amp;As</p>

### 製品の特性

製品の状態	Liquid
保存方法	Shipped at 4°C. Store at +4°C short term (1-2 weeks). Upon delivery aliquot. Store at -20°C long term. Avoid freeze / thaw cycle.
バッファー	pH: 8.20 Constituent: 100% Borate buffered saline
精製度	Affinity purified
特記事項(精製)	Protein A-purified
ポリ/モノ	ポリクローナル
アイソタイプ	IgG

### アプリケーション

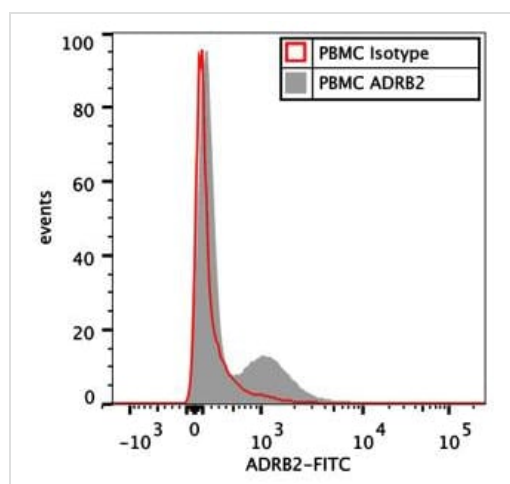
The Abpromise guarantee

**Abpromise保証は、次のテスト済みアプリケーションにおけるab37415の使用に適用されます**

アプリケーションノートには、推奨の開始希釈率がありますが、適切な希釈率につきましてはご確認ください。

アプリケーション	Abreviews	特記事項
IHC-P		Use at an assay dependent concentration. PubMed: 24961933
ICC/IF		Use at an assay dependent concentration. PubMed: 23995768
ELISA		Use at an assay dependent concentration.
Flow Cyt		Use 1µg for 10 <sup>6</sup> cells.
ChIP/Chip		Use at an assay dependent concentration. PubMed: 20673990

## 画像

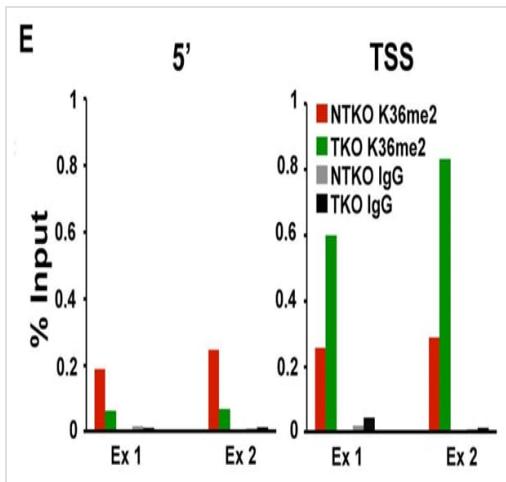


Flow Cytometry - Rabbit IgG, polyclonal - Isotype Control (ab37415)

Image from Hilbert T et al., PLoS One. 2013;8(5):e65024. Fig 3(A); doi: 10.1371/journal.pone.0065024. Reproduced under the Creative Commons license <http://creativecommons.org/licenses/by/4.0/>

Histogram showing the fluorescence signal for ADRB2-FITC in PBMCs compared to an Isotype control.

PBMCs were generated from freshly-drawn blood from healthy human donors. After staining with antibodies against ADRB2 ([ab36956](#)) or an isotype control (ab37415), cells were incubated with FITC-labeled secondary anti-rabbit-IgG antibody, and ADRB2 expression was assessed by flow cytometry.



ChIP-qPCR for H3K36me2 on the *BTF3* locus in NTKO and TKO cells. Methylation enrichment was tested 5 kb upstream of the TSS (5') and at the TSS (right). ab37415 was used as the isotype control.

ChIP - Rabbit IgG, polyclonal - Isotype Control  
(ab37415)

Image from Popovic R et al., PLoS Genet. 2014;10(9):e1004566. Fig 1(E).; doi: 10.1371/journal.pgen.1004566. Reproduced under the Creative Commons license <http://creativecommons.org/licenses/by/4.0/>

**Please note:** All products are "FOR RESEARCH USE ONLY. NOT FOR USE IN DIAGNOSTIC PROCEDURES"

### Our Abpromise to you: Quality guaranteed and expert technical support

- Replacement or refund for products not performing as stated on the datasheet
- Valid for 12 months from date of delivery
- Response to your inquiry within 24 hours
- We provide support in Chinese, English, French, German, Japanese and Spanish
- Extensive multi-media technical resources to help you
- We investigate all quality concerns to ensure our products perform to the highest standards

If the product does not perform as described on this datasheet, we will offer a refund or replacement. For full details of the Abpromise, please visit <https://www.abcam.co.jp/abpromise> or contact our technical team.

### Terms and conditions

- Guarantee only valid for products bought direct from Abcam or one of our authorized distributors