

Rabbit IgG, monoclonal [EPR25A] - Isotype Control ab172730

リコンビナント **RabMAb**

457 References 画像数 15

製品の概要

製品名	Rabbit IgG, monoclonal [EPR25A] - Isotype Control
アプリケーション	適用あり: ICC/IF, Flow Cyt, IHC-P, ChIP-sequencing, IP, ChIC/CUT&RUN-seq
免疫原	Chemical/ Small Molecule conjugated to keyhole limpet haemocyanin. KLH is a copper containing oxygen carrier occurring freely dissolved in the hemolymph of many molluscs and arthropods. KLH forms a large complex composed of ~50 kDa subunits.
特記事項	<p>KLH is often used in molecular immunology as a carrier protein conjugated to low molecular weight molecules such as peptides, amino acids, nucleic acids, drugs or toxins to render them more immunogenic due to the size of the conjugate complex and the immunogenicity of KLH.</p> <p>This product is a recombinant monoclonal antibody, which offers several advantages including:</p> <ul style="list-style-type: none"> - High batch-to-batch consistency and reproducibility - Improved sensitivity and specificity - Long-term security of supply - Animal-free production <p>For more information see here.</p> <p>Our RabMAb[®] technology is a patented hybridoma-based technology for making rabbit monoclonal antibodies. For details on our patents, please refer to RabMAb[®] patents.</p>

製品の特性

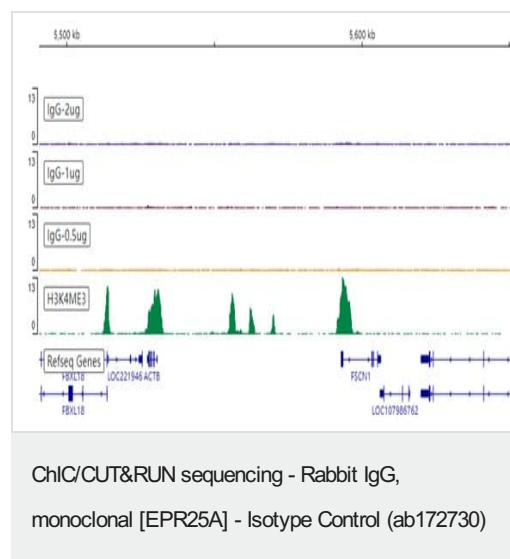
製品の状態	Liquid
保存方法	Shipped at 4°C. Store at +4°C short term (1-2 weeks). Upon delivery aliquot. Store at -20°C long term. Avoid freeze / thaw cycle.
バッファー	Preservative: 0.01% Sodium azide Constituents: 59% PBS, 40% Glycerol, 0.05% BSA
精製度	Protein A purified
ポリ/モノ	モノクローナル
クローン名	EPR25A
アイソタイプ	IgG

アプリケーション

The Abpromise guarantee Abpromise保証は、 次のテスト済みアプリケーションにおけるab172730の使用に適用されます
アプリケーションノートには、推奨の開始希釈率がありますが、適切な希釈率につきましてはご検討ください。

アプリケーション	Abreviews	特記事項
ICC/IF		Use at an assay dependent concentration. Please note: This product should be diluted to the same concentration (not dilution) of the primary antibody to be used.
Flow Cyt		Use at an assay dependent concentration. Please note: This product should be diluted to the same concentration (not dilution) of the primary antibody to be used.
IHC-P		Use at an assay dependent concentration. Perform heat mediated antigen retrieval with Tris/EDTA buffer pH 9.0 before commencing with IHC staining protocol. Please note: This product should be diluted to the same concentration (not dilution) of the primary antibody to be used.
ChIP-seq		Use at an assay dependent concentration. PubMed: 26455392
IP		Use at an assay dependent concentration.
ChIC/CUT&RUN-seq		Use at an assay dependent concentration. 0.5 µg - 2µg

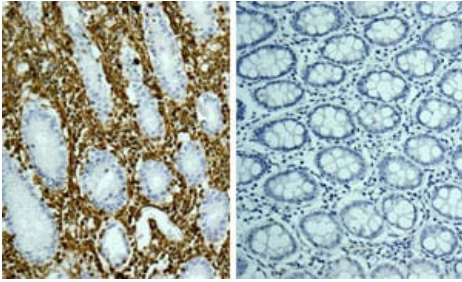
画像



ChIC/CUT&RUN was performed using a pAG-MNase at a final concentration of 700 ng/mL, 2.5 x 10⁵ HeLa (Human cervix adenocarcinoma epithelial cell line) cells and 0.5 µg, 1 µg or 2µg of ab172730 [EPR25A]. The resulting DNA was sequenced on the Illumina NovaSeq 6000 to a depth of 10 million reads. H3K4me3 ([ab213224](#)) used for comparison.

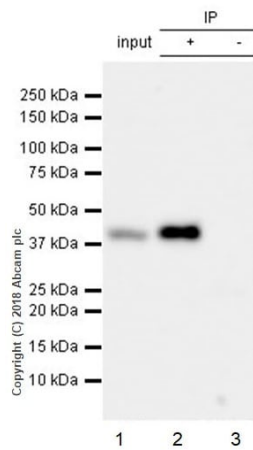
Additional screenshots of mapped reads can be downloaded [here](#).

The University of Geneva owns patents relevant to ChIC (Chromatin Immuno-Cleavage) methods.



Immunohistochemistry (Formalin/PFA-fixed paraffin-embedded sections) - Rabbit IgG, monoclonal [EPR25A] - Isotype Control (ab172730)

Immunohistochemical analysis of paraffin-embedded human colon tissue using anti-Vimentin RabMAb ([ab92547](#), left panel) (brown) and Rabbit mAb IgG control (ab172730, right panel).



Immunoprecipitation - Rabbit IgG, monoclonal [EPR25A] - Isotype Control (ab172730)

LINE-1 ORF1p was immunoprecipitated from 0.35 mg F9 (mouse embryonal carcinoma epithelial cell) whole cell lysate with [ab216324](#) at 1/30 dilution. Western blot was performed from the immunoprecipitate using [ab216324](#) at 1/1000 dilution. VeriBlot for IP Detection Reagent (HRP) ([ab131366](#)), was used for detection at 1/5000 dilution.

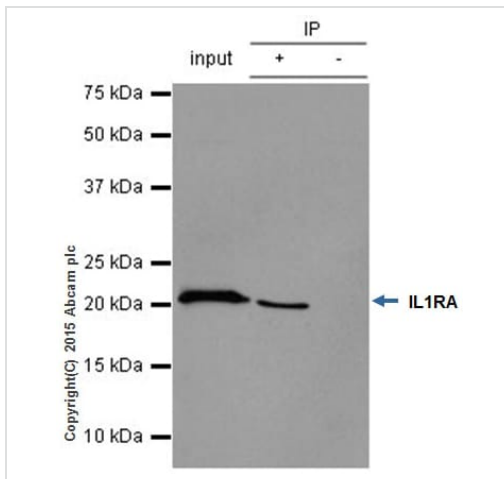
Lane 1: F9 whole cell lysate 10 µg (Input).

Lane 2: [ab216324](#) IP in F9 whole cell lysate.

Lane 3: Rabbit monoclonal IgG (ab172730) instead of [ab216324](#) in F9 whole cell lysate.

Blocking/Dilution buffer: 5% NFDM/TBST.

Exposure time: 30 seconds.



Immunoprecipitation - Rabbit IgG, monoclonal [EPR25A] - Isotype Control (ab172730)

ab124962 (purified) at 1/20 immunoprecipitating IL-1RA in NIH/3T3 whole cell lysate.

Lane 1 (input): NIH/3T3 whole cell lysate (10µg)

Lane 2 (+): **ab124962** + NIH/3T3 whole cell lysate.

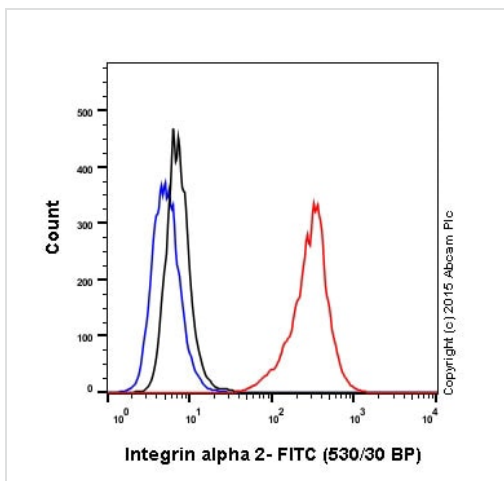
Lane 3 (-): Rabbit monoclonal IgG (ab172730) instead of **ab124962** in NIH/3T3 whole cell lysate.

For western blotting, VeriBlot for IP Detection Reagent (HRP)

(**ab131366**), was used for detection at 1/10,000 dilution.

Blocking buffer and concentration: 5% NFDM/TBST.

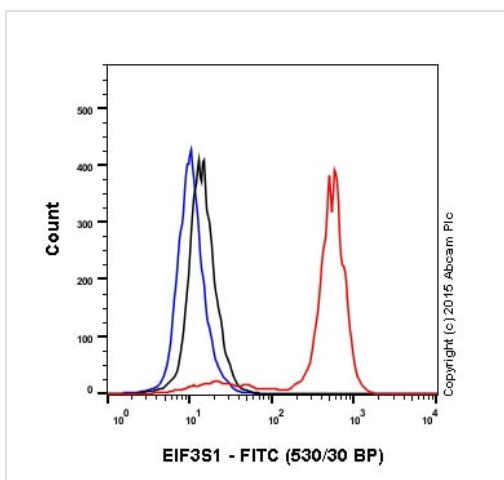
Diluting buffer and concentration: 5% NFDM /TBST.



Flow Cytometry - Rabbit IgG, monoclonal [EPR25A] - Isotype Control (ab172730)

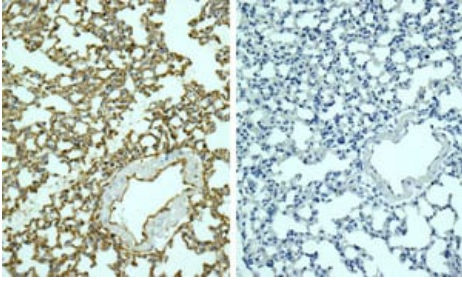
Overlay histogram showing A549 (human lung carcinoma) cells stained with **ab133557** (red line). The cells were fixed with 2% paraformaldehyde. The cells were then incubated with **ab133557** at 1/60 dilution. The secondary antibody used was goat anti-rabbit IgG (FITC) at 1/150 dilution. Isotype control antibody (black line) was rabbit IgG (monoclonal) (ab172730). Unlabelled control (blue line) was cells without incubation with primary antibody and secondary antibody. Acquisition of >5,000 events were collected using a 20mW Argon ion laser (488nm) and 530/30 bandpass filter.

Conjugated versions are available for this clone: Alexa Fluor® 488 (**ab199091**), Alexa Fluor® 647 (**ab199093**), R-PE (**ab209478**), APC (**ab232814**).



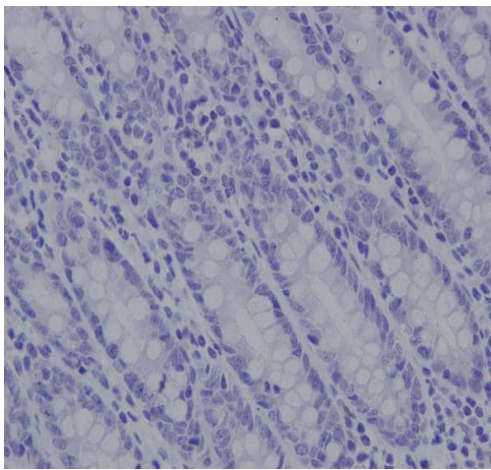
Flow Cytometry - Rabbit IgG, monoclonal [EPR25A] - Isotype Control (ab172730)

Overlay histogram showing K562 (human chronic myelogenous leukemia) cells stained with **ab196018** (red line). The cells were fixed with 2% paraformaldehyde. The cells were then incubated with **ab196018** at 1/150 dilution. The secondary antibody used was goat anti-rabbit IgG (FITC) at 1/150 dilution. Isotype control antibody (black line) was rabbit IgG (monoclonal) (ab172730). Unlabelled control (blue line) was cells without incubation with primary antibody and secondary antibody. Acquisition of >5,000 events were collected using a 20mW Argon ion laser (488nm) and 530/30 bandpass filter.



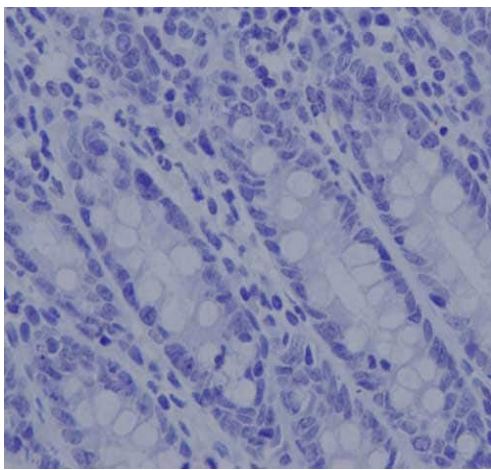
Immunohistochemical analysis of paraffin-embedded mouse lung tissue using anti-Vimentin RabMAb ([ab92547](#), left panel) (brown) and Rabbit mAb IgG control (ab172730, right panel).

Immunohistochemistry (Formalin/PFA-fixed paraffin-embedded sections) - Rabbit IgG, monoclonal [EPR25A] - Isotype Control (ab172730)



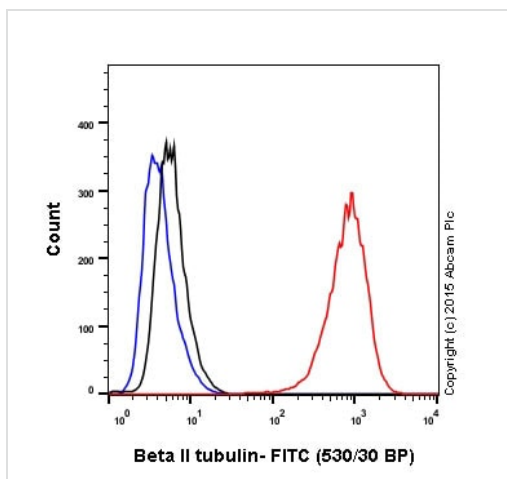
Immunohistochemistry (Formalin/PFA-fixed paraffin-embedded sections) analysis of human colon tissue with unpurified Rabbit IgG ab172730 at 1/10. Heat mediated antigen retrieval was performed using Tris/EDTA buffer pH 9. A prediluted HRP-polymer conjugated anti-rabbit IgG was used as the secondary antibody. Counterstained with Hematoxylin.

Immunohistochemistry (Formalin/PFA-fixed paraffin-embedded sections) - Rabbit IgG, monoclonal [EPR25A] - Isotype Control (ab172730)



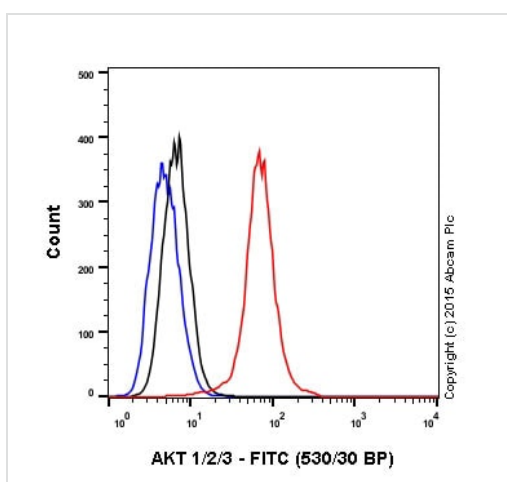
Immunohistochemistry (Formalin/PFA-fixed paraffin-embedded sections) analysis of human colon tissue with purified Rabbit IgG ab172730 at 1/100. Heat mediated antigen retrieval was performed using Tris/EDTA buffer pH 9. A prediluted HRP-polymer conjugated anti-rabbit IgG was used as the secondary antibody. Counterstained with Hematoxylin.

Immunohistochemistry (Formalin/PFA-fixed paraffin-embedded sections) - Rabbit IgG, monoclonal [EPR25A] - Isotype Control (ab172730)



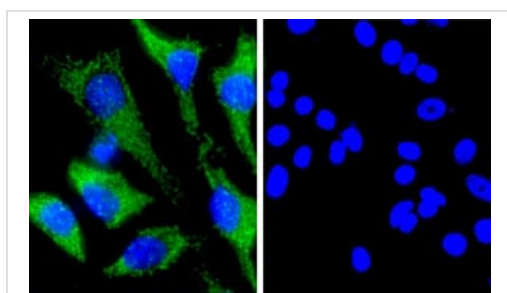
Flow Cytometry - Rabbit IgG, monoclonal [EPR25A]
- Isotype Control (ab172730)

Overlay histogram showing SH-SY5Y (human neuroblastoma) cells stained with **ab179513** (red line). The cells were fixed with 2% paraformaldehyde. The cells were then incubated with **ab179513** at 1/150 dilution. The secondary antibody used was goat anti-rabbit IgG (FITC) at 1/150 dilution. Isotype control antibody (black line) was rabbit IgG (monoclonal) (ab172730). Unlabelled control (blue line) was cells without incubation with primary antibody and secondary antibody. Acquisition of >5,000 events were collected using a 20mW Argon ion laser (488nm) and 530/30 bandpass filter.



Flow Cytometry - Rabbit IgG, monoclonal [EPR25A]
- Isotype Control (ab172730)

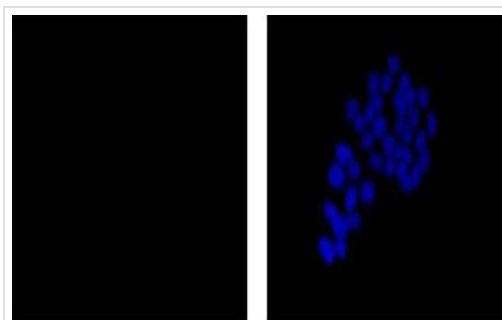
Overlay histogram showing A549 (human lung carcinoma) cells stained with **ab185633** (red line). The cells were fixed with 2% paraformaldehyde. The cells were then incubated with **ab185633** at 1/150 dilution. The secondary antibody used was goat anti-rabbit IgG (FITC) at 1/150 dilution. Isotype control antibody (black line) was rabbit IgG (monoclonal) (ab172730). Unlabelled control (blue line) was cells without incubation with primary antibody and secondary antibody. Acquisition of >5,000 events were collected using a 20mW Argon ion laser (488nm) and 530/30 bandpass filter



Immunocytochemistry/ Immunofluorescence - Rabbit IgG, monoclonal [EPR25A] - Isotype Control (ab172730)

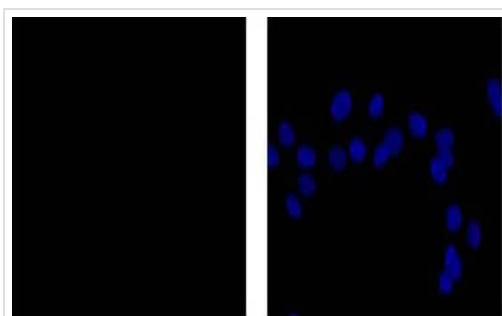
Immunofluorescent staining of HeLa cells using anti-AIF RabMAb (**ab32516**, left panel) (green) and Rabbit mAb IgG control (ab172730, right panel). DAPI nuclear staining (blue).

Conjugated versions are available for this clone: Alexa Fluor[®] 488 (**ab199091**), Alexa Fluor[®] 647 (**ab199093**), R-PE (**ab209478**), APC (**ab232814**).



Immunocytochemistry/ Immunofluorescence - Rabbit IgG, monoclonal [EPR25A] - Isotype Control (ab172730)

Immunocytochemistry/immunofluorescence analysis of HeLa cells with purified Rabbit IgG ab172730 at 1/100. Cells were fixed with 4% paraformaldehyde. An Alexa Fluor® 488-conjugated goat anti-rabbit IgG (1/200) was used as the secondary antibody. Counterstained with DAPI (blue).



Immunocytochemistry/ Immunofluorescence - Rabbit IgG, monoclonal [EPR25A] - Isotype Control (ab172730)

Immunocytochemistry/immunofluorescence analysis of HeLa cells with unpurified Rabbit IgG ab172730 at 1/10. Cells were fixed with 4% paraformaldehyde. An Alexa Fluor® 488-conjugated goat anti-rabbit IgG (1/200) was used as the secondary antibody. Counterstained with DAPI (blue).

Why choose a recombinant antibody?

Research with confidence
Consistent and reproducible results

Long-term and scalable supply
Recombinant technology

Success from the first experiment
Confirmed specificity

Ethical standards compliant
Animal-free production

Rabbit IgG, monoclonal [EPR25A] - Isotype Control (ab172730)

Please note: All products are "FOR RESEARCH USE ONLY. NOT FOR USE IN DIAGNOSTIC PROCEDURES"

7

Our Abpromise to you: Quality guaranteed and expert technical support

- Replacement or refund for products not performing as stated on the datasheet
- Valid for 12 months from date of delivery
- Response to your inquiry within 24 hours

- We provide support in Chinese, English, French, German, Japanese and Spanish
- Extensive multi-media technical resources to help you
- We investigate all quality concerns to ensure our products perform to the highest standards

If the product does not perform as described on this datasheet, we will offer a refund or replacement. For full details of the Abpromise, please visit <https://www.abcam.co.jp/abpromise> or contact our technical team.

Terms and conditions

- Guarantee only valid for products bought direct from Abcam or one of our authorized distributors