

Anti-Rab5A antibody [3A4] - Early Endosome Marker ab66746

KO 評価済

★★★★★ 1 Abreviews 9 References 画像数 3

製品の概要

製品名	Anti-Rab5A antibody [3A4] - Early Endosome Marker
製品の詳細	Mouse monoclonal [3A4] to Rab5A - Early Endosome Marker
由来種	Mouse
アプリケーション	適用あり: WB 適用なし: ICC/IF
種交差性	交差種: Mouse, Human
免疫原	Recombinant fragment corresponding to Human Rab5a aa 1-250.
ポジティブ・コントロール	WB: Extracts of mouse and human brain. ICC/IF: U87MG cells.
特記事項	<p>This product was changed from ascites to tissue culture supernatant on 24/01/2019. Please note that the dilutions may need to be adjusted accordingly. If you have any questions, please do not hesitate to contact our scientific support team.</p> <p>The Life Science industry has been in the grips of a reproducibility crisis for a number of years. Abcam is leading the way in addressing this with our range of recombinant monoclonal antibodies and knockout edited cell lines for gold-standard validation. Please check that this product meets your needs before purchasing.</p> <p>If you have any questions, special requirements or concerns, please send us an inquiry and/or contact our Support team ahead of purchase. Recommended alternatives for this product can be found below, along with publications, customer reviews and Q&As</p>

製品の特性

製品の状態	Liquid
保存方法	Shipped at 4°C. Upon delivery aliquot and store at -20°C. Avoid freeze / thaw cycles.
バッファー	pH: 7.40 Preservative: 0.1% Sodium azide Constituent: PBS
精製度	Protein G purified
ポリ/モノ	モノクローナル
クローン名	3A4

ミエローマ	Sp2/0
アイソタイプ	IgG2b
軽鎖の種類	kappa

アプリケーション

The Abpromise guarantee **Abpromise保証は、**次のテスト済みアプリケーションにおけるab66746の使用に適用されます
アプリケーションノートには、推奨の開始希釈率がありますが、適切な希釈率につきましてはご検討ください。

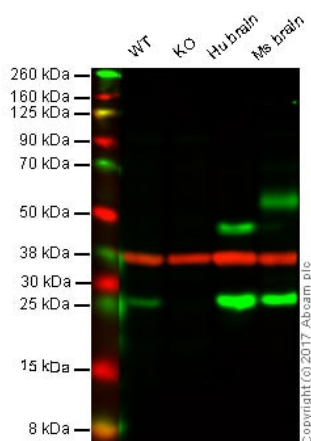
アプリケーション	Abreviews	特記事項
WB		Use at an assay dependent concentration. Detects a band of approximately 24 kDa (predicted molecular weight: 24 kDa).

追加情報 Is unsuitable for ICC/IF.

ターゲット情報

機能	The small GTPases Rab are key regulators of intracellular membrane trafficking, from the formation of transport vesicles to their fusion with membranes. Rabs cycle between an inactive GDP-bound form and an active GTP-bound form that is able to recruit to membranes different sets of downstream effectors directly responsible for vesicle formation, movement, tethering and fusion. RAB5A is required for the fusion of plasma membranes and early endosomes (PubMed:10818110, PubMed:14617813, PubMed:16410077, PubMed:15378032). Contributes to the regulation of filopodia extension (PubMed:14978216). Required for the exosomal release of SDCBP, CD63, PDCD6IP and syndecan (PubMed:22660413). Regulates maturation of apoptotic cell-containing phagosomes, probably downstream of DYN2 and PIK3C3.
配列類似性	Belongs to the small GTPase superfamily. Rab family.
細胞内局在	Cell membrane. Early endosome membrane. Melanosome. Cytoplasmic vesicle. Cell projection, ruffle. Membrane. Cytoplasm, cytosol. Cytoplasmic vesicle, phagosome membrane. Enriched in stage I melanosomes (PubMed:17081065). Alternates between membrane-bound and cytosolic forms (Probable).

画像



Western blot - Anti-Rab5 antibody [3A4] - Drosophila
Early Endosome Marker (ab66746)

Lane 1: Wild type HAP1 whole cell lysate (20 μ g)

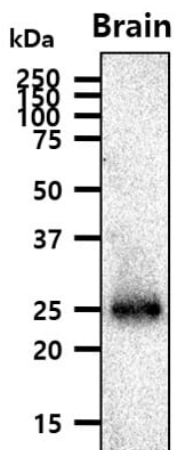
Lane 2: Rab5 knockout HAP1 whole cell lysate (20 μ g)

Lane 3: Hu brain whole cell lysate (20 μ g)

Lane 4: Ms brain whole cell lysate (20 μ g)

Lanes 1 - 4: Merged signal (red and green). Green - ab66746 observed at 25 kDa. Red - loading control, [ab181602](#), observed at 37 kDa.

This image was produced using the ascites version of this antibody.



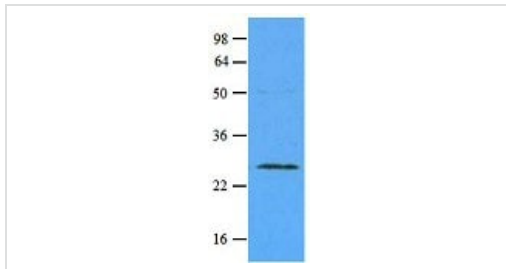
Western blot - Anti-Rab5 antibody [3A4] - Drosophila
Early Endosome Marker (ab66746)

Anti-Rab5A antibody [3A4] - Early Endosome Marker (ab66746) at 1/500 dilution + mouse brain at 45 μ g

Secondary

goat anti-mouse secondary antibody conjugated to HRP

Predicted band size: 24 kDa



Western blot - Anti-Rab5 antibody [3A4] - Drosophila
Early Endosome Marker (ab66746)

Anti-Rab5A antibody [3A4] - Early Endosome Marker (ab66746) at
1/500 dilution + extracts of mouse brain at 45 µg

Secondary

HRP-conjugated goat anti-mouse

Developed using the ECL technique.

Predicted band size: 24 kDa

Observed band size: 24 kDa

This image was produced using the ascites version of this antibody.

Please note: All products are "FOR RESEARCH USE ONLY. NOT FOR USE IN DIAGNOSTIC PROCEDURES"

Our Abpromise to you: Quality guaranteed and expert technical support

- Replacement or refund for products not performing as stated on the datasheet
- Valid for 12 months from date of delivery
- Response to your inquiry within 24 hours
- We provide support in Chinese, English, French, German, Japanese and Spanish
- Extensive multi-media technical resources to help you
- We investigate all quality concerns to ensure our products perform to the highest standards

If the product does not perform as described on this datasheet, we will offer a refund or replacement. For full details of the Abpromise, please visit <https://www.abcam.co.jp/abpromise> or contact our technical team.

Terms and conditions

- Guarantee only valid for products bought direct from Abcam or one of our authorized distributors