

Anti-Rab5 antibody - Drosophila Early Endosome Marker ab31261

★★★★★ [7 Abreviews](#) [62 References](#) [画像数 1](#)

製品の概要

製品名	Anti-Rab5 antibody - Drosophila Early Endosome Marker
製品の詳細	Rabbit polyclonal to Rab5 - Drosophila Early Endosome Marker
由来種	Rabbit
アプリケーション	適用あり: WB
種交差性	交差種: Drosophila melanogaster
免疫原	Synthetic peptide conjugated to KLH derived from within residues 200 to the C-terminus of Fruit fly (Drosophila melanogaster) Rab5.Immunogen の所有権に関して(Peptide available as ab32489 .)
特記事項	<p>The Life Science industry has been in the grips of a reproducibility crisis for a number of years. Abcam is leading the way in addressing this with our range of recombinant monoclonal antibodies and knockout edited cell lines for gold-standard validation. Please check that this product meets your needs before purchasing.</p> <p>If you have any questions, special requirements or concerns, please send us an inquiry and/or contact our Support team ahead of purchase. Recommended alternatives for this product can be found below, along with publications, customer reviews and Q&As</p>

製品の特性

製品の状態	Liquid
保存方法	Shipped at 4°C. Store at +4°C short term (1-2 weeks). Upon delivery aliquot. Store at -20°C or -80°C. Avoid freeze / thaw cycle.
バッファー	<p>pH: 7.40</p> <p>Preservative: 0.02% Sodium azide</p> <p>Constituent: PBS</p> <p>Batches of this product that have a concentration < 1mg/ml may have BSA added as a stabilising agent. If you would like information about the formulation of a specific lot, please contact our scientific support team who will be happy to help.</p>
精製度	Immunogen affinity purified
ポリ/モノ	ポリクローナル

アプリケーション

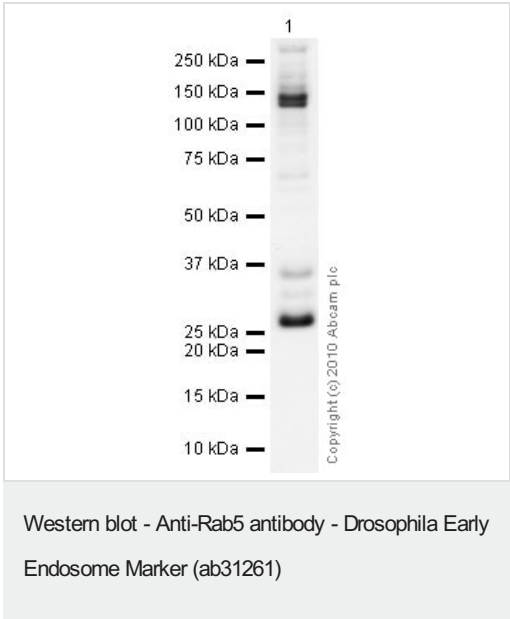
The Abpromise guarantee **Abpromise保証は、** 次のテスト済みアプリケーションにおけるab31261の使用に適用されます
アプリケーションノートには、推奨の開始希釈率がありますが、適切な希釈率につきましてはご検討ください。

アプリケーション	Abreviews	特記事項
WB	★★★★★ (2)	Use a concentration of 1 µg/ml. Detects a band of approximately 26 kDa (predicted molecular weight: 26 kDa).

ターゲット情報

機能	Required for the fusion of plasma membranes and early endosomes.
配列類似性	Belongs to the small GTPase superfamily. Rab family.
細胞内局在	Cell membrane. Early endosome membrane. Melanosome. Enriched in stage I melanosomes.

画像



Anti-Rab5 antibody - Drosophila Early Endosome Marker (ab31261) at 1 µg/ml + Schneider L2 whole cell lysate (**ab14893**) at 10 µg

Secondary
Goat polyclonal to Rabbit IgG - H&L - Pre-Adsorbed (HRP) at 1/3000 dilution

Performed under reducing conditions.

Predicted band size: 26 kDa
Observed band size: 26 kDa
Additional bands at: 135 kDa, 145 kDa. We are unsure as to the identity of these extra bands.

Exposure time: 2 minutes

ab31261 detects a strong 26 kDa band in Drosophila lysate consistent with expected molecular weight of Rab5. In some batches of this antibody, we have observed additional bands at ~135, 145 and 70 kDa, the identity of which are unknown.

Please note: All products are "FOR RESEARCH USE ONLY. NOT FOR USE IN DIAGNOSTIC PROCEDURES"

Our Abpromise to you: Quality guaranteed and expert technical support

- Replacement or refund for products not performing as stated on the datasheet
- Valid for 12 months from date of delivery
- Response to your inquiry within 24 hours
- We provide support in Chinese, English, French, German, Japanese and Spanish
- Extensive multi-media technical resources to help you
- We investigate all quality concerns to ensure our products perform to the highest standards

If the product does not perform as described on this datasheet, we will offer a refund or replacement. For full details of the Abpromise, please visit <https://www.abcam.co.jp/abpromise> or contact our technical team.

Terms and conditions

- Guarantee only valid for products bought direct from Abcam or one of our authorized distributors