

Anti-Rab4 antibody - Early Endosome Marker ab13252

★★★★★ [6 Abreviews](#) [36 References](#) [画像数 2](#)

製品の概要

製品名	Anti-Rab4 antibody - Early Endosome Marker
製品の詳細	Rabbit polyclonal to Rab4 - Early Endosome Marker
由来種	Rabbit
特異性	This antibody is very specific for Rab4. To our knowledge this antibody does not cross-react with other Rab proteins. However, as there are dozens of different proteins in the Rab family, not every single one has been tested for cross-reactivity with this antibody.
アプリケーション	適用あり: WB, ICC
種交差性	交差種: Rat
免疫原	Fusion protein corresponding to Human Rab4. Database link: P20338
特記事項	<p>The Life Science industry has been in the grips of a reproducibility crisis for a number of years. Abcam is leading the way in addressing this with our range of recombinant monoclonal antibodies and knockout edited cell lines for gold-standard validation. Please check that this product meets your needs before purchasing.</p> <p>If you have any questions, special requirements or concerns, please send us an inquiry and/or contact our Support team ahead of purchase. Recommended alternatives for this product can be found below, along with publications, customer reviews and Q&As</p>

製品の特性

製品の状態	Liquid
保存方法	Shipped at 4°C. Store at +4°C short term (1-2 weeks). Upon delivery aliquot. Store at -20°C or -80°C. Avoid freeze / thaw cycle.
バッファー	Preservative: 0.09% Sodium azide Constituents: PBS, 50% Glycerol (glycerin, glycerine)
精製度	Protein A purified
ポリ/モノ	ポリクローナル
アイソタイプ	IgG

アプリケーション

The Abpromise guarantee

Abpromise保証は、次のテスト済みアプリケーションにおけるab13252の使用に適用されます

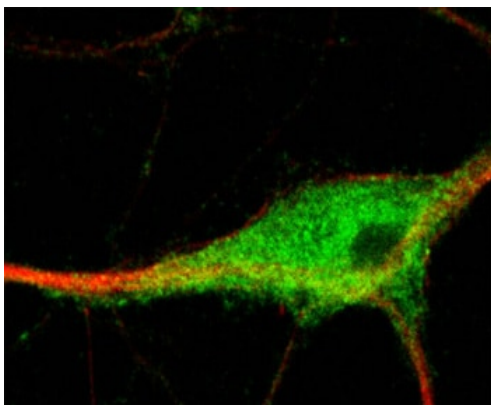
アプリケーションノートには、推奨の開始希釈率がありますが、適切な希釈率につきましてはご確認ください。

アプリケーション	Abreviews	特記事項
WB	★★★★★ (1)	1/1000. Detects a band of approximately 26 kDa (predicted molecular weight: 25.6 kDa).
ICC	★★★★★ (1)	1/200 - 1/500.

ターゲット情報

機能	Protein transport. Probably involved in vesicular traffic.
配列類似性	Belongs to the small GTPase superfamily. Rab family.
翻訳後修飾	Phosphorylated by CDK1 kinase during mitosis.
細胞内局在	Membrane. Cytoplasm. Generally associated with membranes. Cytoplasmic when phosphorylated by CDK1.

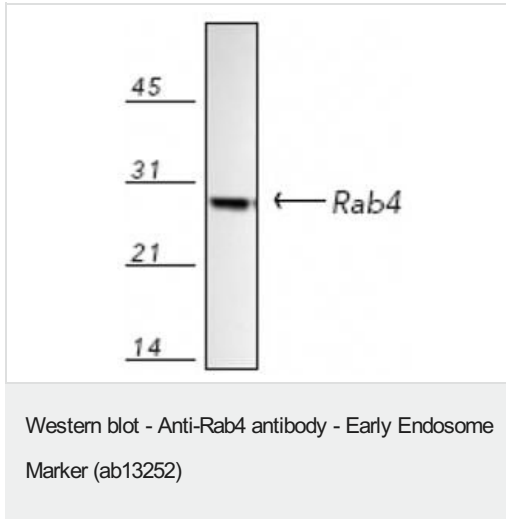
画像



ab13252, rabbit polyclonal to Rab4 was used in fixed primary cultures of rat hippocampal neurons (embryonic day 18) at a dilution of 1/200. A secondary goat anti-rabbit antibody was used for detection (Alexa Fluor 488; 1/200; green). Confocal microscopy revealed typically punctuate immunofluorescence expected of Rab4 in these neurons. The red colour labelling is that of monoclonal mouse anti-beta-tubulin II at a 1/400 dilution, followed by secondary goat anti-mouse Alexa Fluor 568.

Immunocytochemistry - Anti-Rab4 antibody - Early
Endosome Marker (ab13252)

This image is courtesy of Randal Moldrich, CNRS
UMR7637, ESPCI, France



Anti-Rab4 antibody - Early Endosome Marker (ab13252) at 1/1000 dilution + Lysates prepared from rat brain tissue

Predicted band size: 25.6 kDa

Please note: All products are "FOR RESEARCH USE ONLY. NOT FOR USE IN DIAGNOSTIC PROCEDURES"

Our Abpromise to you: Quality guaranteed and expert technical support

- Replacement or refund for products not performing as stated on the datasheet
- Valid for 12 months from date of delivery
- Response to your inquiry within 24 hours
- We provide support in Chinese, English, French, German, Japanese and Spanish
- Extensive multi-media technical resources to help you
- We investigate all quality concerns to ensure our products perform to the highest standards

If the product does not perform as described on this datasheet, we will offer a refund or replacement. For full details of the Abpromise, please visit <https://www.abcam.co.jp/abpromise> or contact our technical team.

Terms and conditions

- Guarantee only valid for products bought direct from Abcam or one of our authorized distributors