


Anti-RAB21 antibody ab88762

★★★★★ [1 Abreviews](#) [画像数 1](#)

製品の概要

製品名	Anti-RAB21 antibody
製品の詳細	Rabbit polyclonal to RAB21
由来種	Rabbit
アプリケーション	適用あり: WB
種交差性	交差種: Human 交差が予測される動物種: Mouse, Rat, Cow, Dog, Zebrafish 
免疫原	Synthetic peptide corresponding to Human RAB21 aa 50-150 conjugated to keyhole limpet haemocyanin. (Peptide available as ab89377)
ポジティブ・コントロール	This antibody gave a positive signal in Human liver tissue lysate and in the following whole cell lysates: HepG2; HeLa; A431; Jurkat.
特記事項	<p>The Life Science industry has been in the grips of a reproducibility crisis for a number of years. Abcam is leading the way in addressing this with our range of recombinant monoclonal antibodies and knockout edited cell lines for gold-standard validation. Please check that this product meets your needs before purchasing.</p> <p>If you have any questions, special requirements or concerns, please send us an inquiry and/or contact our Support team ahead of purchase. Recommended alternatives for this product can be found below, along with publications, customer reviews and Q&As</p>

製品の特性

製品の状態	Liquid
保存方法	Shipped at 4°C. Store at +4°C short term (1-2 weeks). Upon delivery aliquot. Store at -20°C or -80°C. Avoid freeze / thaw cycle.
バッファー	pH: 7.40 Preservative: 0.02% Sodium azide Constituent: PBS

Batches of this product that have a concentration < 1mg/ml may have BSA added as a stabilising agent. If you would like information about the formulation of a specific lot, please contact our scientific support team who will be happy to help.

精製度	Immunogen affinity purified
ポリ/モノ	ポリクローナル
アイソタイプ	IgG

アプリケーション

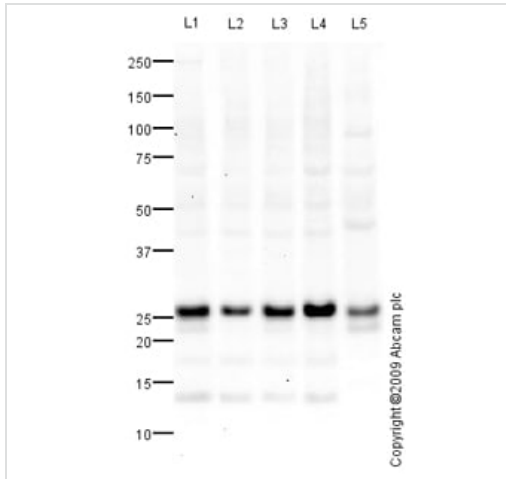
The Abpromise guarantee **Abpromise保証は、次のテスト済みアプリケーションにおけるab88762の使用に適用されます**
 アプリケーションノートには、推奨の開始希釈率がありますが、適切な希釈率につきましてはご検討ください。

アプリケーション	Abreviews	特記事項
WB	★★★★★ (1)	Use a concentration of 1 µg/ml. Detects a band of approximately 26 kDa (predicted molecular weight: 24 kDa).

ターゲット情報

機能	Regulates integrin internalization and recycling, but does not influence the traffic of endosomally translocated receptors in general. As a result, may regulate cell adhesion and migration (By similarity). During the mitosis of adherent cells, controls the endosomal trafficking of integrins which is required for the successful completion of cytokinesis.
組織特異性	Widely expressed. In jejunal tissue, predominantly expressed in the apical region of the epithelial cell layer of the villi, weak expression, if any, in the crypt epithelium. Capillary endothelium and some cell types in the lamina propria also show expression.
配列類似性	Belongs to the small GTPase superfamily. Rab family.
細胞内局在	Endoplasmic reticulum membrane. Golgi apparatus membrane. Early endosome membrane. Cytoplasmic vesicle membrane. Cleavage furrow. In nonpolarized epithelial Caco-2 cells, found in the endoplasmic reticulum; in polarized cells, observed in vesicles in the apical cytoplasm. During mitosis, in mid-telophase, localized in the ingressing cleavage furrow. In late telophase, detected at the opposite poles of the daughter cells, in vesicles at the base of lamellipodia formed by the separating daughter cells.

画像



Western blot - Anti-RAB21 antibody (ab88762)

All lanes : Anti-RAB21 antibody (ab88762) at 1 µg/ml

Lane 1 : HepG2 (Human hepatocellular liver carcinoma cell line) Whole Cell Lysate

Lane 2 : HeLa (Human epithelial carcinoma cell line) Whole Cell Lysate

Lane 3 : A431 (Human epithelial carcinoma cell line) Whole Cell Lysate

Lane 4 : Jurkat (Human T cell lymphoblast-like cell line) Whole Cell Lysate

Lane 5 : Human liver tissue lysate - total protein ([ab29889](#))

Lysates/proteins at 10 µg per lane.

Secondary

All lanes : Goat polyclonal to Rabbit IgG - H&L - Pre-Adsorbed (HRP) at 1/3000 dilution

Developed using the ECL technique.

Performed under reducing conditions.

Predicted band size: 24 kDa

Observed band size: 26 kDa

Additional bands at: 12.5 kDa. We are unsure as to the identity of these extra bands.

Exposure time: 4 minutes

Please note: All products are "FOR RESEARCH USE ONLY. NOT FOR USE IN DIAGNOSTIC PROCEDURES"

Our Abpromise to you: Quality guaranteed and expert technical support

- Replacement or refund for products not performing as stated on the datasheet
- Valid for 12 months from date of delivery
- Response to your inquiry within 24 hours
- We provide support in Chinese, English, French, German, Japanese and Spanish
- Extensive multi-media technical resources to help you
- We investigate all quality concerns to ensure our products perform to the highest standards

If the product does not perform as described on this datasheet, we will offer a refund or replacement. For full details of the Abpromise, please visit <https://www.abcam.co.jp/abpromise> or contact our technical team.

Terms and conditions

- Guarantee only valid for products bought direct from Abcam or one of our authorized distributors