

Anti-Rab20 antibody ab105043

画像数 2

製品の概要

製品名	Anti-Rab20 antibody
製品の詳細	Rabbit polyclonal to Rab20
由来種	Rabbit
アプリケーション	適用あり: ICC/IF, WB
種交差性	交差種: Human
免疫原	Recombinant fragment, corresponding to a region within amino acids 49- 200 of Human Rab20 (AAH26025).
ポジティブ・コントロール	WB: HeLa, HepG2 and HCT116 cell lysate IF: HeLa cells
特記事項	<p>The Life Science industry has been in the grips of a reproducibility crisis for a number of years. Abcam is leading the way in addressing this with our range of recombinant monoclonal antibodies and knockout edited cell lines for gold-standard validation. Please check that this product meets your needs before purchasing.</p> <p>If you have any questions, special requirements or concerns, please send us an inquiry and/or contact our Support team ahead of purchase. Recommended alternatives for this product can be found below, along with publications, customer reviews and Q&As</p>

製品の特性

製品の状態	Liquid
保存方法	Shipped at 4°C. Upon delivery aliquot and store at -20°C. Avoid repeated freeze / thaw cycles.
バッファー	pH: 7.00 Preservative: 0.025% Proclin 300 Constituents: 79% PBS, 20% Glycerol (glycerin, glycerine)
精製度	Immunogen affinity purified
ポリ/モノ	ポリクローナル
アイソタイプ	IgG

アプリケーション

The Abpromise guarantee

Abpromise保証は、次のテスト済みアプリケーションにおけるab105043の使用に適用されます

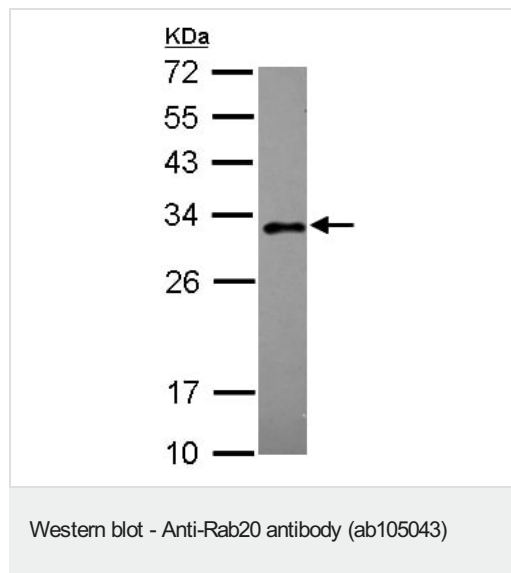
アプリケーションノートには、推奨の開始希釈率がありますが、適切な希釈率につきましてはご確認ください。

アプリケーション	Abreviews	特記事項
ICC/IF		1/100 - 1/500.
WB		1/500 - 1/3000. Predicted molecular weight: 26 kDa.

ターゲット情報

機能	Plays a role in apical endocytosis/recycling. Plays a role in the maturation and acidification of phagosomes that engulf pathogens, such as <i>S.aureus</i> and <i>M.tuberculosis</i> . Plays a role in the fusion of phagosomes with lysosomes.
組織特異性	Low or absent expression in normal pancreas and stronger expression in 15 of 18 exocrine pancreatic adenocarcinomas (at protein level).
配列類似性	Belongs to the small GTPase superfamily. Rab family.
細胞内局在	Golgi apparatus. Cytoplasmic vesicle, phagosome. Cytoplasmic vesicle, phagosome membrane. Highly enriched on apical endocytic structures in polarized epithelial cells of kidney proximal tubules (By similarity). Recruited to phagosomes containing <i>S.aureus</i> or <i>M.tuberculosis</i> (PubMed:21255211).

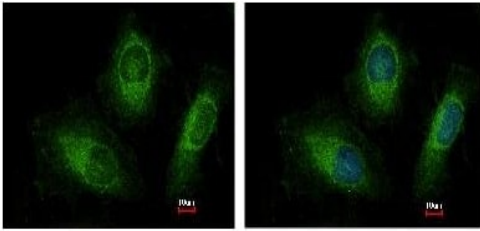
画像



Anti-Rab20 antibody (ab105043) at 1/1000 dilution + HeLa whole cell lysate at 30 µg

Predicted band size: 26 kDa

12% SDS PAGE



ab105043, at a 1/200 dilution, staining Rab20 in methanol-fixed HeLa cells. Right image is costained with Hoechst 33342.

Immunocytochemistry/ Immunofluorescence - Anti-Rab20 antibody (ab105043)

Please note: All products are "FOR RESEARCH USE ONLY. NOT FOR USE IN DIAGNOSTIC PROCEDURES"

Our Abpromise to you: Quality guaranteed and expert technical support

- Replacement or refund for products not performing as stated on the datasheet
- Valid for 12 months from date of delivery
- Response to your inquiry within 24 hours
- We provide support in Chinese, English, French, German, Japanese and Spanish
- Extensive multi-media technical resources to help you
- We investigate all quality concerns to ensure our products perform to the highest standards

If the product does not perform as described on this datasheet, we will offer a refund or replacement. For full details of the Abpromise, please visit <https://www.abcam.co.jp/abpromise> or contact our technical team.

Terms and conditions

- Guarantee only valid for products bought direct from Abcam or one of our authorized distributors