


### Anti-Rab18 antibody ab119900

3 References [画像数 2](#)

医薬用外毒物

#### 製品の概要

製品名	Anti-Rab18 antibody
製品の詳細	Rabbit polyclonal to Rab18
由来種	Rabbit
アプリケーション	<b>適用あり:</b> WB, IHC-P
種交差性	<b>交差種:</b> Human <b>交差が予測される動物種:</b> Rat 
免疫原	Recombinant full length protein corresponding to amino acids 1-206 of Human Rab18 (BC015014).
特記事項	<p>The Life Science industry has been in the grips of a reproducibility crisis for a number of years. Abcam is leading the way in addressing this with our range of recombinant monoclonal antibodies and knockout edited cell lines for gold-standard validation. Please check that this product meets your needs before purchasing.</p> <p>If you have any questions, special requirements or concerns, please send us an inquiry and/or contact our Support team ahead of purchase. Recommended alternatives for this product can be found below, along with publications, customer reviews and Q&amp;As</p>

#### 製品の特性

製品の状態	Lyophilized:Reconstitute in 200ul sterile H2O.
保存方法	Shipped at 4°C. Upon delivery aliquot and store at -20°C. Avoid repeated freeze / thaw cycles.
バッファー	pH: 7.20 Preservative: 0.02% Sodium azide Constituent: 1% BSA
精製度	Immunogen affinity purified
特記事項(精製)	ab119900 is purified by a protein affinity column.
ポリ/モノ	ポリクローナル
アイソタイプ	IgG

#### アプリケーション

## The Abpromise guarantee

**Abpromise保証は、**次のテスト済みアプリケーションにおけるab119900の使用に適用されます

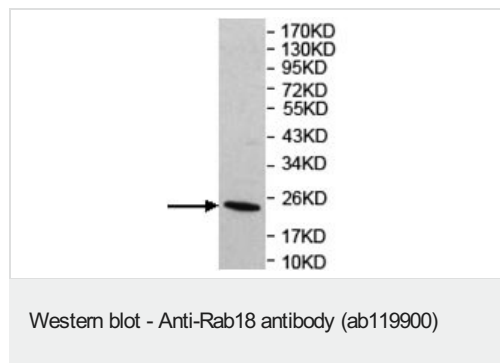
アプリケーションノートには、推奨の開始希釈率がありますが、適切な希釈率につきましてはご確認ください。

アプリケーション	Abreviews	特記事項
WB		1/1000 - 1/2000. Detects a band of approximately 23 kDa (predicted molecular weight: 23 kDa).
IHC-P		1/100 - 1/500.

## ターゲット情報

機能	Plays a role in apical endocytosis/recycling. May be implicated in transport between the plasma membrane and early endosomes.
組織特異性	Ubiquitous.
配列類似性	Belongs to the small GTPase superfamily. Rab family.
細胞内局在	Cell membrane.

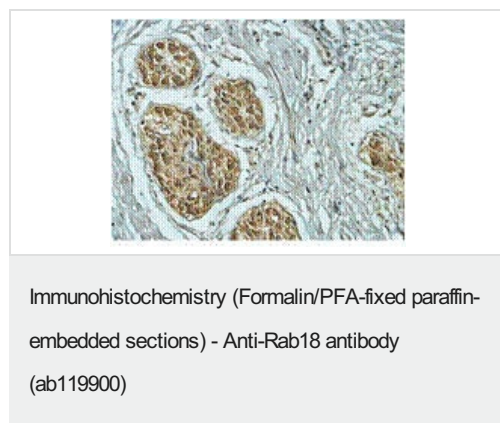
## 画像



Anti-Rab18 antibody (ab119900) at 1/1000 dilution + Human fetal testis lysate

**Predicted band size:** 23 kDa

**Observed band size:** 23 kDa



ab119900 at 1/100 dilution staining Rab18 in Formalin-fixed, Paraffin-embedded Human prostate carcinoma tissue by Immunohistochemistry.

**Please note:** All products are "FOR RESEARCH USE ONLY. NOT FOR USE IN DIAGNOSTIC PROCEDURES"

**Our Abpromise to you: Quality guaranteed and expert technical support**

- Replacement or refund for products not performing as stated on the datasheet
- Valid for 12 months from date of delivery
- Response to your inquiry within 24 hours
- We provide support in Chinese, English, French, German, Japanese and Spanish
- Extensive multi-media technical resources to help you
- We investigate all quality concerns to ensure our products perform to the highest standards

If the product does not perform as described on this datasheet, we will offer a refund or replacement. For full details of the Abpromise, please visit <https://www.abcam.co.jp/abpromise> or contact our technical team.

## **Terms and conditions**

---

- Guarantee only valid for products bought direct from Abcam or one of our authorized distributors