

Anti-RAB11FIP5 antibody ab68947

画像数 1

製品の概要

製品名	Anti-RAB11FIP5 antibody
製品の詳細	Mouse polyclonal to RAB11FIP5
由来種	Mouse
アプリケーション	適用あり: WB
種交差性	交差種: Human
免疫原	Recombinant full length protein within Human RAB11FIP5 aa 1-700. The exact immunogen sequence used to generate this antibody is proprietary information. If additional detail on the immunogen is needed to determine the suitability of the antibody for your needs, please contact our Scientific Support team to discuss your requirements.
ポジティブ・コントロール	RAB11FIP5 transfected 293T cell lysate.
特記事項	<p>The Life Science industry has been in the grips of a reproducibility crisis for a number of years. Abcam is leading the way in addressing this with our range of recombinant monoclonal antibodies and knockout edited cell lines for gold-standard validation. Please check that this product meets your needs before purchasing.</p> <p>If you have any questions, special requirements or concerns, please send us an inquiry and/or contact our Support team ahead of purchase. Recommended alternatives for this product can be found below, along with publications, customer reviews and Q&As</p>

製品の特性

製品の状態	Liquid
保存方法	Shipped at 4°C. Upon delivery aliquot and store at -20°C or -80°C. Avoid repeated freeze / thaw cycles.
バッファー	pH: 7.40 Constituent: 100% PBS
精製度	Protein G purified
ポリ/モノ	ポリクローナル
アイソタイプ	IgG

アプリケーション

The Abpromise guarantee

Abpromise保証は、次のテスト済みアプリケーションにおけるab68947の使用に適用されず

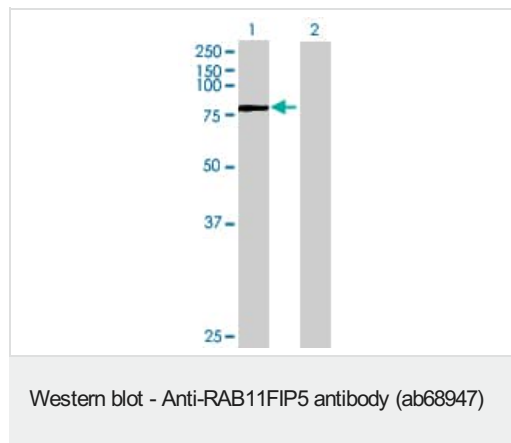
アプリケーションノートには、推奨の開始希釈率がありますが、適切な希釈率につきましてはご検討ください。

アプリケーション	Abreviews	特記事項
WB		1/500 - 1/1000. Detects a band of approximately 77 kDa (predicted molecular weight: 70 kDa).

ターゲット情報

機能	Rab effector involved in protein trafficking from apical recycling endosomes to the apical plasma membrane.
組織特異性	Detected at low levels in heart, brain, placenta, lung, liver, adipocytes, kidney, spleen, skeletal muscle and pancreas.
配列類似性	Contains 1 C2 domain. Contains 1 FIP-RBD domain.
ドメイン	Binds to vesicles enriched in neutral phospholipids via its C2 domain. The interaction is favored by Mg(2+) rather than Ca(2+).
翻訳後修飾	Phosphorylated on serine and threonine residues.
細胞内局在	Cytoplasm. Recycling endosome membrane. Mitochondrion membrane.

画像



All lanes : Anti-RAB11FIP5 antibody (ab68947) at 1/500 dilution

Lane 1 : RAB11FIP5 transfected 293T cell lysate

Lane 2 : Non transfected 293T cell lysate

Lysates/proteins at 25 µg per lane.

Secondary

All lanes : Goat Anti-Mouse IgG (H&L)-HRP Conjugate at 1/2500 dilution

Predicted band size: 70 kDa

Observed band size: 77 kDa

Please note: All products are "FOR RESEARCH USE ONLY. NOT FOR USE IN DIAGNOSTIC PROCEDURES"

Our Abpromise to you: Quality guaranteed and expert technical support

- Replacement or refund for products not performing as stated on the datasheet

- Valid for 12 months from date of delivery
- Response to your inquiry within 24 hours

- We provide support in Chinese, English, French, German, Japanese and Spanish
- Extensive multi-media technical resources to help you
- We investigate all quality concerns to ensure our products perform to the highest standards

If the product does not perform as described on this datasheet, we will offer a refund or replacement. For full details of the Abpromise, please visit <https://www.abcam.co.jp/abpromise> or contact our technical team.

Terms and conditions

- Guarantee only valid for products bought direct from Abcam or one of our authorized distributors