

# Anti-RAB10 antibody [4E2] ab104859

**15 References**   **画像数 3**

### 製品の概要

製品名	Anti-RAB10 antibody [4E2]
製品の詳細	Mouse monoclonal [4E2] to RAB10
由来種	Mouse
アプリケーション	<b>適用あり:</b> ICC/IF, WB, Flow Cyt
種交差性	<b>交差種:</b> Mouse, Human
免疫原	Purified recombinant fragment of Human RAB10 expressed in E. coli.
ポジティブ・コントロール	Hela and NIH/3T3 cell lysates; LOVO cells
特記事項	<p>This product was changed from ascites to supernatant. Lot no's high than GR120151-16 are from Tissue Culture Supernatant</p> <p>The Life Science industry has been in the grips of a reproducibility crisis for a number of years. Abcam is leading the way in addressing this with our range of recombinant monoclonal antibodies and knockout edited cell lines for gold-standard validation. Please check that this product meets your needs before purchasing.</p> <p>If you have any questions, special requirements or concerns, please send us an inquiry and/or contact our Support team ahead of purchase. Recommended alternatives for this product can be found below, along with publications, customer reviews and Q&amp;As</p>

### 製品の特性

製品の状態	Liquid
保存方法	Shipped at 4°C. Store at +4°C short term (1-2 weeks). Store at -20°C long term.
バッファー	Preservative: 0.05% Sodium azide Constituent: PBS
精製度	Protein G purified
特記事項 (精製)	Purified from tissue culture supernatant.
ポリ/モノ	モノクローナル
クローン名	4E2
アイソタイプ	IgG1

## アプリケーション

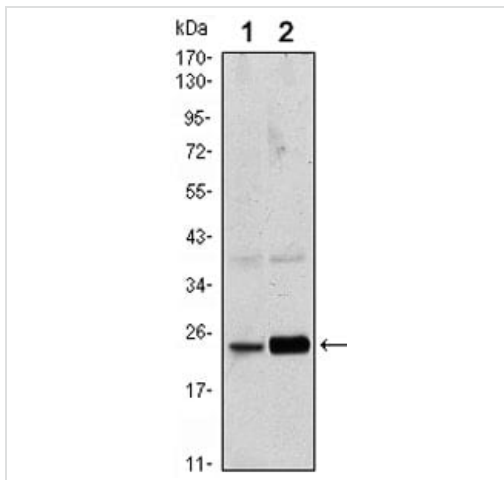
The Abpromise guarantee      Abpromise保証は、次のテスト済みアプリケーションにおけるab104859の使用に適用されます  
アプリケーションノートには、推奨の開始希釈率がありますが、適切な希釈率につきましてはご検討ください。

アプリケーション	Abreviews	特記事項
ICC/IF		1/200 - 1/1000.
WB		1/500 - 1/2000. Predicted molecular weight: 23 kDa.
Flow Cyt		1/100. <b>ab170190</b> - Mouse monoclonal IgG1, is suitable for use as an isotype control with this antibody.

## ターゲット情報

機能	The small GTPases Rab are key regulators of intracellular membrane trafficking, from the formation of transport vesicles to their fusion with membranes. Rabs cycle between an inactive GDP-bound form and an active GTP-bound form that is able to recruit to membranes different set of downstream effectors directly responsible for vesicle formation, movement, tethering and fusion (By similarity). That Rab is mainly involved in the biosynthetic transport of proteins from the Golgi to the plasma membrane. Regulates, for instance, SLC2A4/GLUT4 glucose transporter-enriched vesicles delivery to the plasma membrane. In parallel, it regulates the transport of TLR4, a toll-like receptor to the plasma membrane and therefore may be important for innate immune response. Plays also a specific role in asymmetric protein transport to the plasma membrane within the polarized neuron and epithelial cells. In neurons, it is involved in axonogenesis through regulation of vesicular membrane trafficking toward the axonal plasma membrane while in epithelial cells, it regulates transport from the Golgi to the basolateral membrane. Moreover, may play a role in the basolateral recycling pathway and in phagosome maturation. According to PubMed:23263280, may play a role in endoplasmic reticulum dynamics and morphology controlling tubulation along microtubules and tubules fusion.
配列類似性	Belongs to the small GTPase superfamily. Rab family.
細胞内局在	Cytoplasmic vesicle membrane. Golgi apparatus membrane. Golgi apparatus, trans-Golgi network membrane. Endosome membrane. Recycling endosome membrane. Cytoplasmic vesicle, phagosome membrane. Cell projection, cilium. Endoplasmic reticulum membrane. Associates with SLC2A4/GLUT4 storage vesicles (PubMed:22908308). Localizes to the base of the cilium (PubMed:20576682). Transiently associates with phagosomes (By similarity). Localizes to the endoplasmic reticulum at domains of new tubule growth (PubMed:23263280).

## 画像



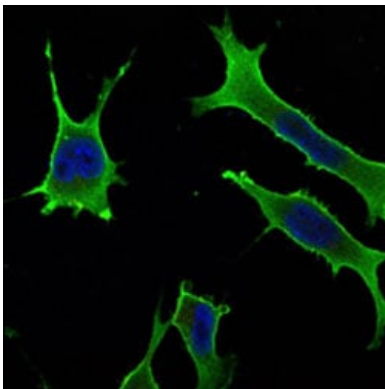
Western blot - Anti-RAB10 antibody [4E2]  
(ab104859)

**All lanes :** Anti-RAB10 antibody [4E2] (ab104859) at 1/500 dilution

**Lane 1 :** HeLa cell lysate

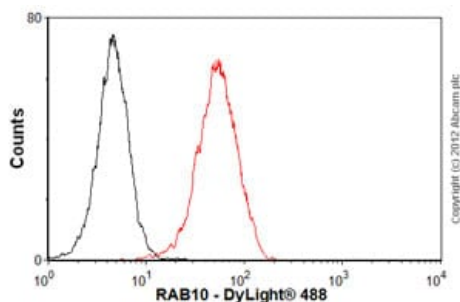
**Lane 2 :** NIH/3T3 cell lysate

**Predicted band size:** 23 kDa



Immunocytochemistry/ Immunofluorescence - Anti-  
RAB10 antibody [4E2] (ab104859)

Immunofluorescence analysis of LOVO cells using ab104859  
(green). Blue: DRAQ5 fluorescent DNA dye.



Flow Cytometry - Anti-RAB10 antibody [4E2]  
(ab104859)

Overlay histogram showing HeLa cells stained with ab104859 (red line). The cells were fixed with 80% methanol (5 min) and incubated in 1x PBS / 10% normal goat serum / 0.3M glycine to block non-specific protein-protein interactions. The cells were then incubated with the antibody (ab104859, 1/100 dilution) for 30 min at 22°C. The secondary antibody used was DyLight® 488 goat anti-mouse IgG (H+L) ([ab96879](#)) at 1/500 dilution for 30 min at 22°C. Isotype control antibody (black line) was mouse IgG1 [ICIGG1] ([ab91653](#), 2µg/1x10<sup>6</sup> cells) used under the same conditions. Acquisition of >5,000 events was performed.

Please note that Abcam do not have any data for use of this antibody on non-fixed cells. We welcome any customer feedback.

**Please note:** All products are "FOR RESEARCH USE ONLY. NOT FOR USE IN DIAGNOSTIC PROCEDURES"

### **Our Abpromise to you: Quality guaranteed and expert technical support**

---

- Replacement or refund for products not performing as stated on the datasheet
- Valid for 12 months from date of delivery
- Response to your inquiry within 24 hours
- We provide support in Chinese, English, French, German, Japanese and Spanish
- Extensive multi-media technical resources to help you
- We investigate all quality concerns to ensure our products perform to the highest standards

If the product does not perform as described on this datasheet, we will offer a refund or replacement. For full details of the Abpromise, please visit <https://www.abcam.co.jp/abpromise> or contact our technical team.

### **Terms and conditions**

---

- Guarantee only valid for products bought direct from Abcam or one of our authorized distributors